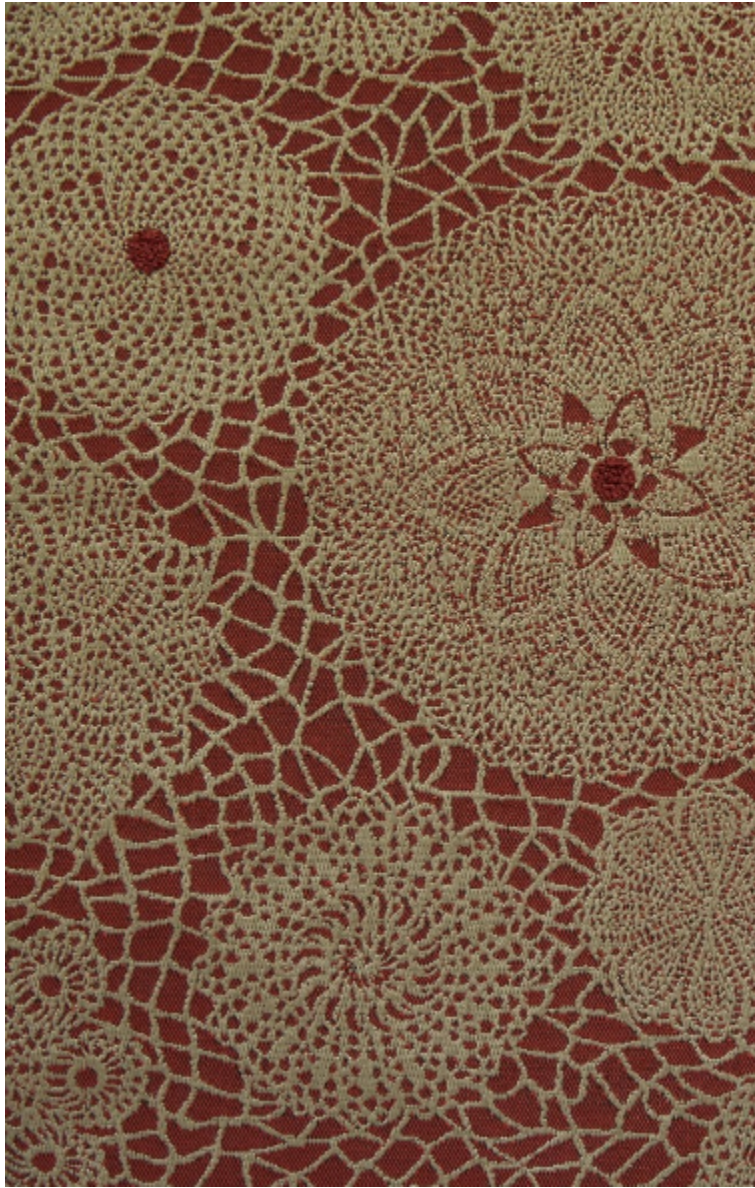


MACRAME - BRIQUE *

3491-03



A jacquard weave with a classical, soothing design in relief.

Collection **POP ROCK**

Brand **JEAN PAUL GAULTIER**

TECHNICAL DATA

Composition **Viscose 70% - Polyester 30%**


Width **140 cm**

Repeat cut **No**

Vertical repeat **47 cm**

Horizontal repeat **35 cm**

Drop match **No**

Care    

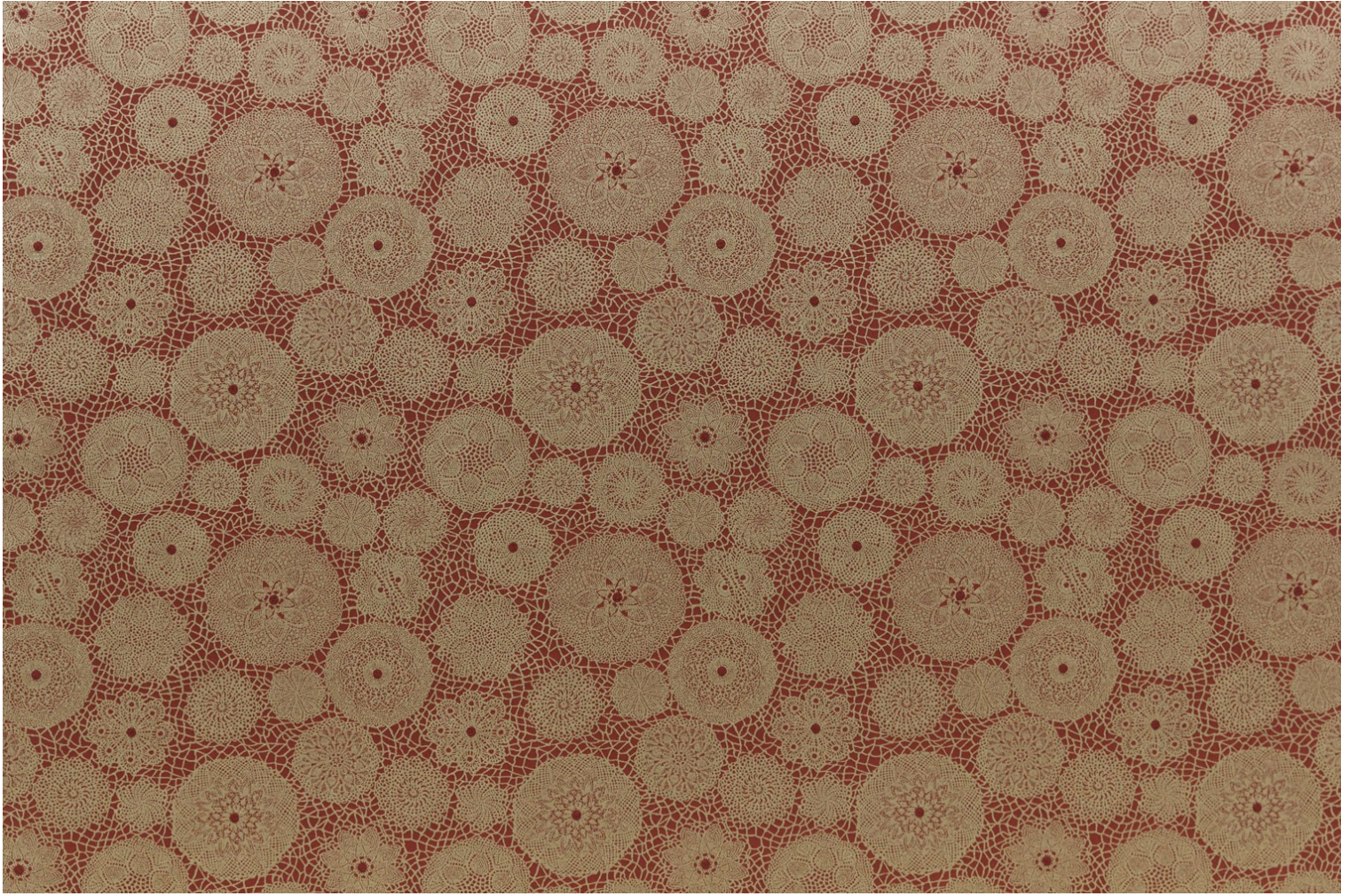
Uses   

Martindale test **25 000 T**

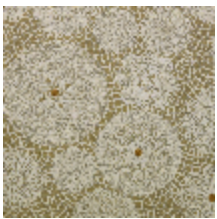
Weight / Linear metre **742 g**

LELIEVRE

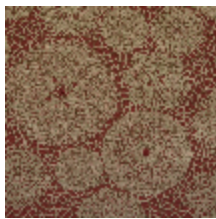
PARIS



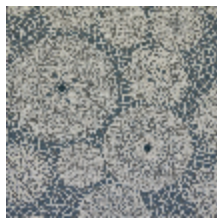
Available colours



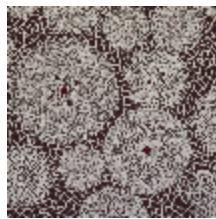
3491-02
**MACRAME -
POLLEN ***



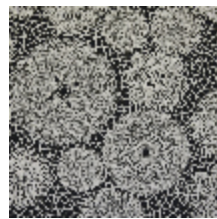
3491-03
**MACRAME -
BRIQUE ***



3491-04
**MACRAME - BLEU



3491-05
**MACRAME -
BORDEAUX ***



3491-06
**MACRAME - NOIR

MACRAME - BRIQUE *

3491-03

