

MACRAME - BLEU

3491-04



A jacquard weave with a classical, soothing design in relief.

Collection **POP ROCK**

Brand **JEAN-PAUL GAULTIER**

TECHNICAL DATA

Composition **Viscose 70% - Polyester 30%**

Width **140 cm**

Repeat cut **No**

Vertical repeat **47 cm**

Horizontal repeat **35 cm**

Drop match **No**

Care 

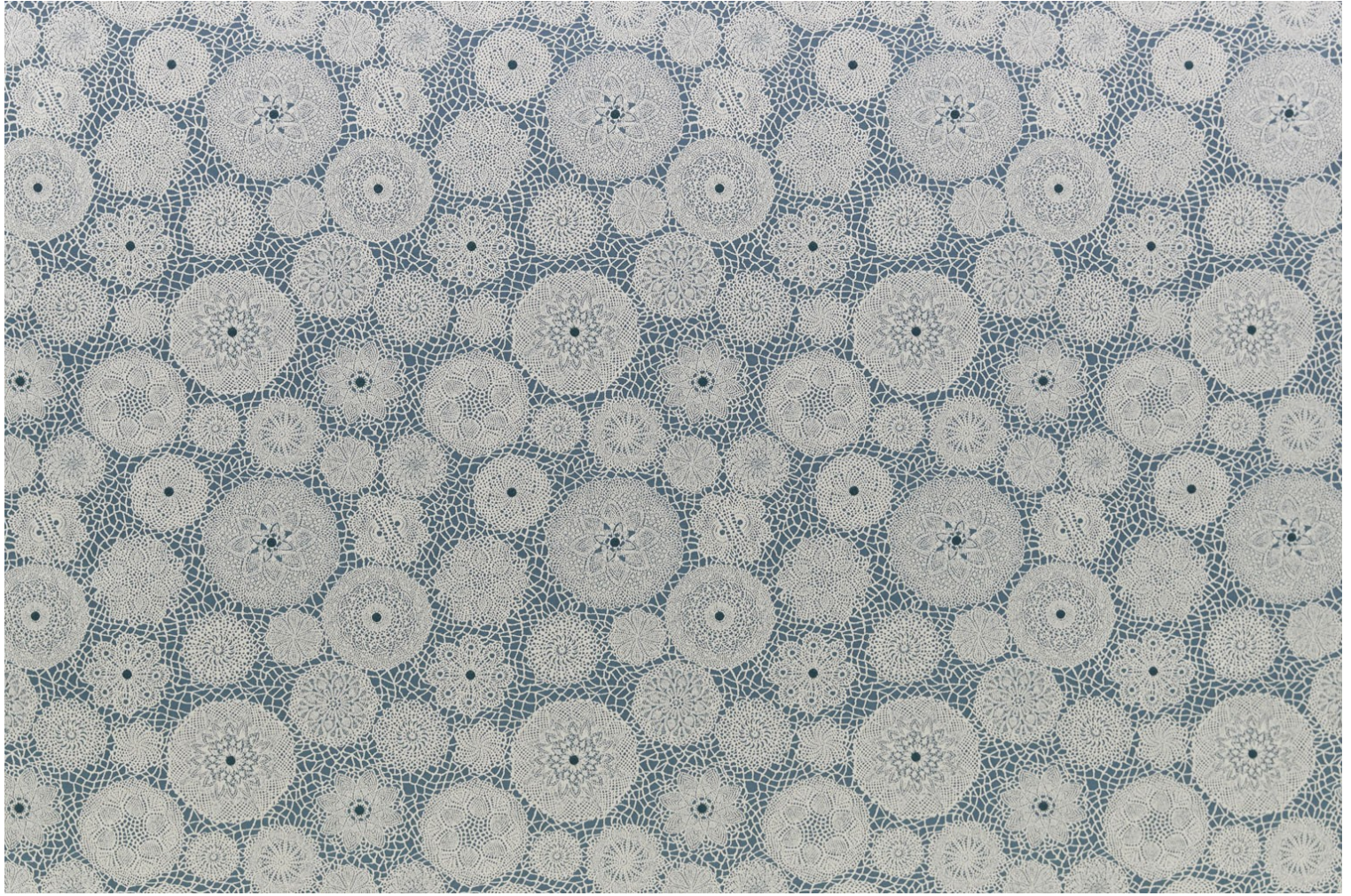
Uses 

Martindale test **25 000 T**

Weight / Linear metre **742 g**

LELIEVRE

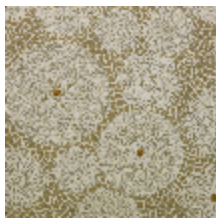
PARIS



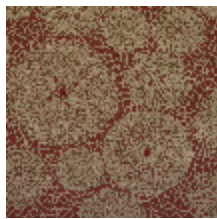
Available colours



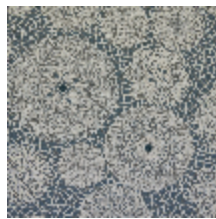
3491-01
**MACRAME -
NATUREL**



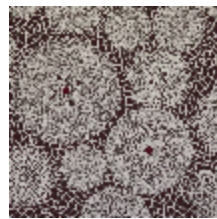
3491-02
**MACRAME -
POLLEN**



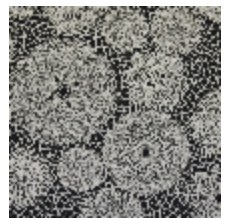
3491-03
**MACRAME -
BRIQUE**



3491-04
MACRAME - BLEU



3491-05
**MACRAME -
BORDEAUX**



3491-06
MACRAME - NOIR

MACRAME - BLEU

3491-04

