

LELIEVRE

PARIS

OPTIC - JAUNE *

3494-02



The corresponding jacquard is more discrete multi-use classical semi-plain.

Collection	POP ROCK
------------	----------

Brand	JEAN PAUL GAULTIER
-------	--------------------

TECHNICAL DATA

Composition	Viscose 74% - Cotton 23% - Polyamide 3%
-------------	--

Width	140 cm
-------	--------

Repeat cut	No
------------	----

Vertical repeat	6 cm
-----------------	------

Horizontal repeat	17 cm
-------------------	-------

Drop match	No
------------	----

Care	   
------	---

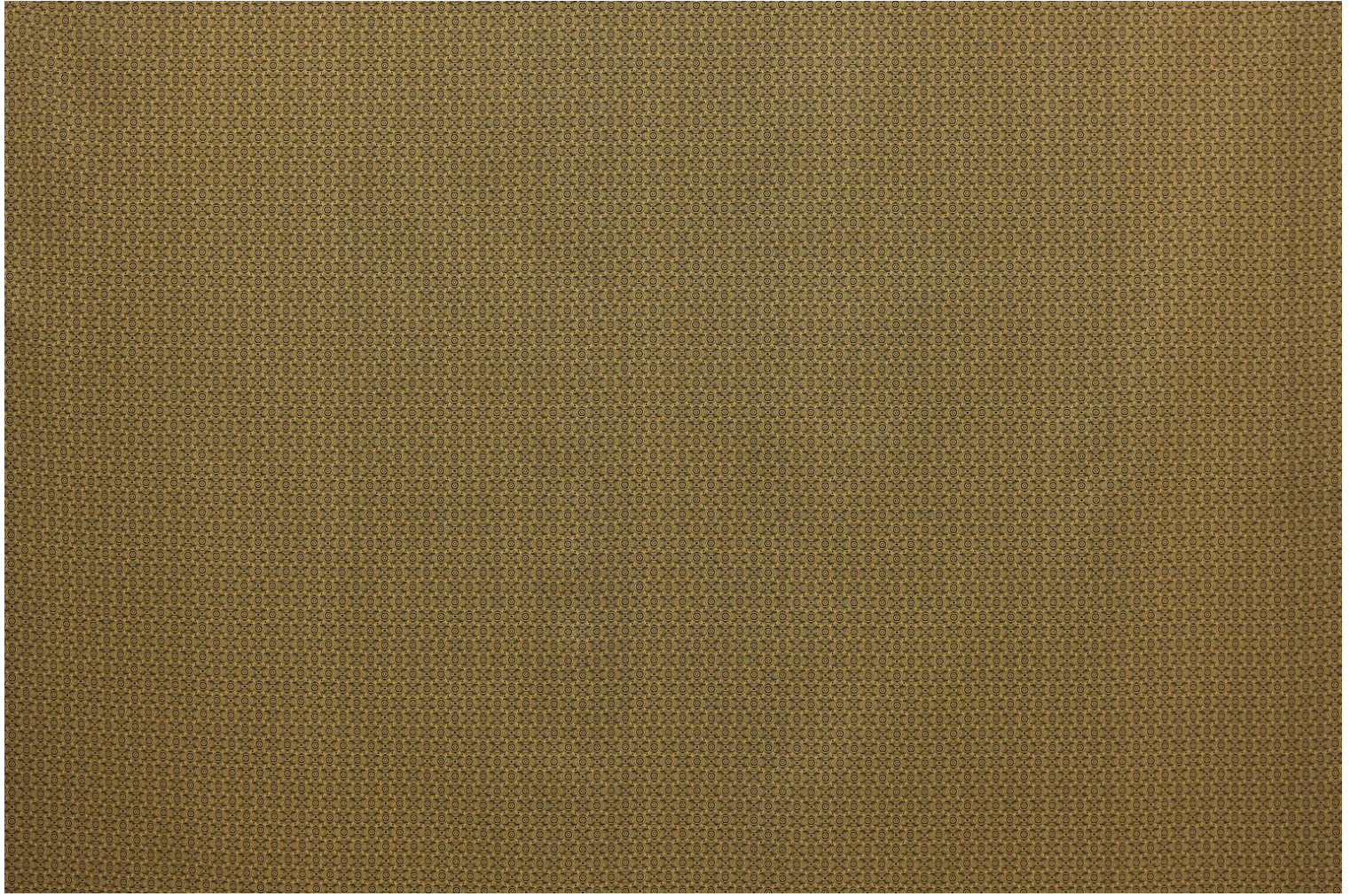
Uses	   
------	---

Martindale test	25 000 T
-----------------	----------

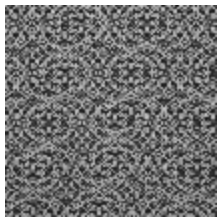
Weight / Linear metre	461 g
-----------------------	-------

LELIEVRE

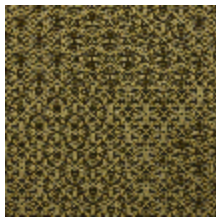
PARIS



Available colours



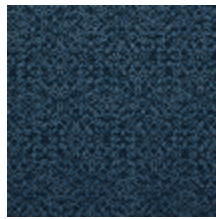
3494-01
**OPTIC -
GRAPHITE ***



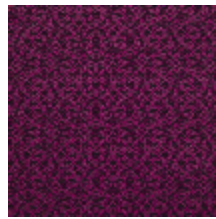
3494-02
OPTIC - JAUNE *



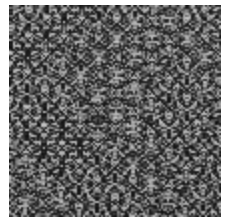
3494-03
OPTIC - ROUGE *



3494-04
**OPTIC -
TURQUOISE ***



3494-05
**OPTIC - FUCHSIA



3494-06
OPTIC - NOIR *

LELIEVRE

PARIS

OPTIC - JAUNE *

3494-02



lelievrepairs.com
contact@lelievrepairs.com