

# LELIEVRE

PARIS

## NOOREA - NATUREL

3495-01



A matt jacquard design the yarn contrasts and allies with the satin of the wallpaper.

---

Collection	POP ROCK
------------	----------

---

Brand	JEAN PAUL GAULTIER
-------	--------------------

---

### TECHNICAL DATA

---

Composition	Polyester 100%
-------------	----------------

---

Width	140 cm
-------	--------

---

Repeat cut	No
------------	----

---

Vertical repeat	52 cm
-----------------	-------


---

Horizontal repeat	69 cm
-------------------	-------

---

Drop match	No
------------	----

---

Care	   
------	---

---

Uses	   
------	---

---

Martindale test	25 000 T
-----------------	----------

---

Weight / Linear metre	460 g
-----------------------	-------

---

# LELIEVRE

PARIS



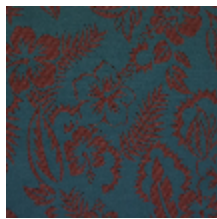
## Available colours



3495-01  
**NOOREA -  
NATUREL**



3495-02  
**NOOREA - JAUNE**



3495-03  
**NOOREA -  
CANARD**



3495-04  
**NOOREA -  
FUCHSIA**



3495-05  
**NOOREA -  
PETROLE**



**NOOREA - NATUREL**

3495-01

