

PATCHWORK - TAUPE

3614-02



With its quilted Cordoba leather effect, Patchwork is a great relief work with a very supple and a satiny feel. Also used in many of Jean Paul Gaultier's Haute Couture creations, this pattern is now making its way into our interiors.

Collection	LA CROISIERE S'AMUSE
------------	----------------------

Brand	JEAN PAUL GAULTIER
-------	--------------------

TECHNICAL DATA

Composition	65% Cotton - 30% Polyamide - 5% Polyester
-------------	---

Width	145 cm
-------	--------

Repeat cut	No
------------	----

Vertical repeat	81 cm
-----------------	-------

Drop match	No
------------	----

Care	   
------	---

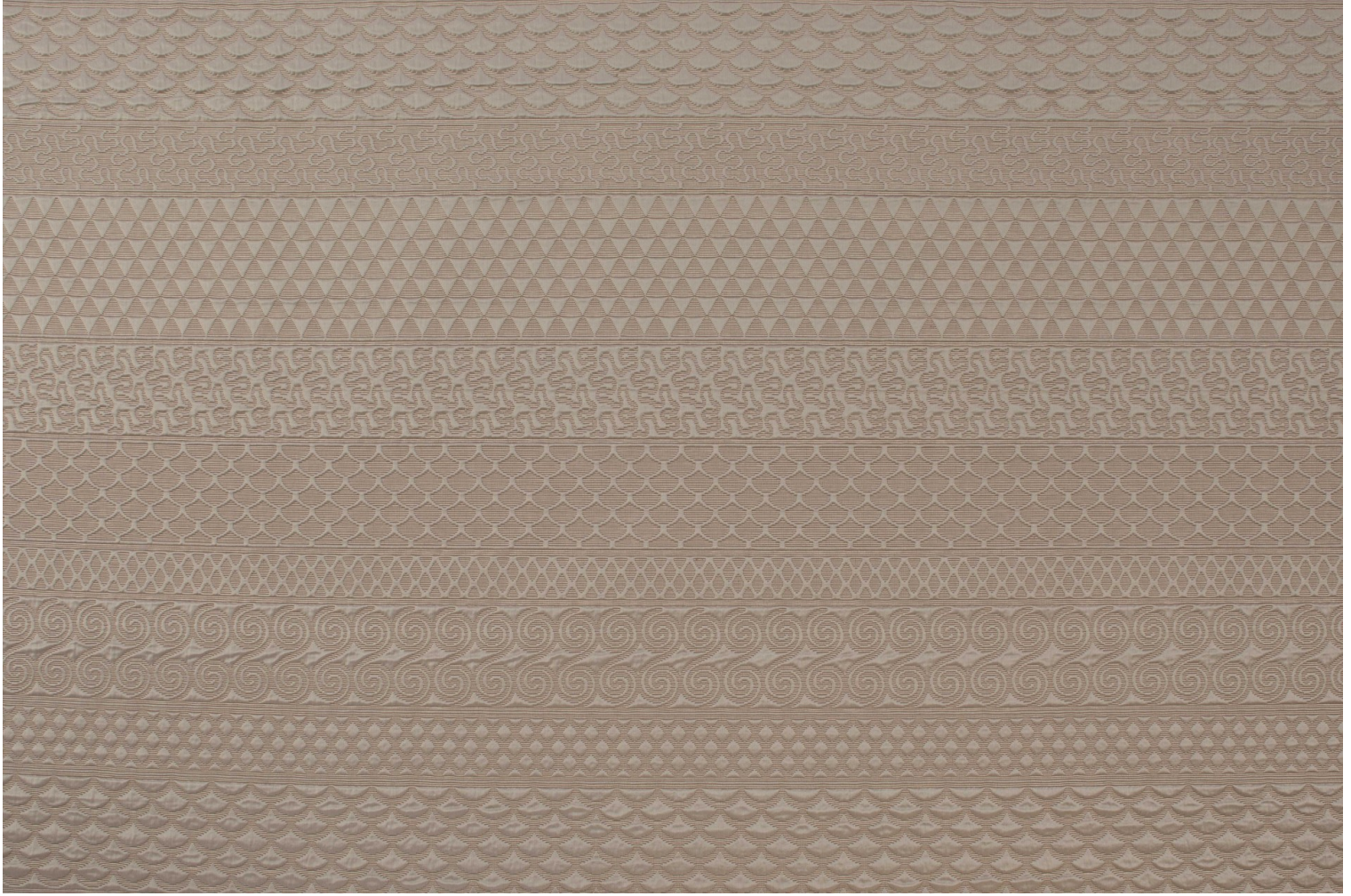
Uses	   
------	---

Martindale test	30 000 T
-----------------	----------

Weight / Linear metre	570 g
-----------------------	-------

LELIEVRE

PARIS



LELIEVRE

PARIS

Available colours



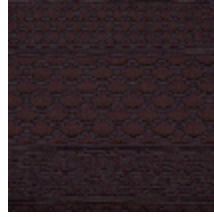
3614-01
**PATCHWORK -
FUSAIN**



3614-02
**PATCHWORK -
TAUPE**



3614-03
**PATCHWORK -
CAMEL**



3614-04
**PATCHWORK -
BURGUNDY**



3614-05
**PATCHWORK -
LILAS**



3614-06
**PATCHWORK -
ACQUA**



3614-07
**PATCHWORK -
PAON**



3614-08
**PATCHWORK -
LIMONCELLO**

PATCHWORK - TAUPE

3614-02

