

# LELIEVRE

PARIS

## CROISIERE - BENGALE

3615-03



Jean Paul Gaultier's classic sailor stripe has been decorated with flowers in a summery jacquard. The ikat-effect flowers are reminiscent of the designer's DNA.

Collection LA CROISIERE S'AMUSE

Brand JEAN PAUL GAULTIER

### TECHNICAL DATA

Composition 72% Viscose - 28% Cotton


Width 145 cm


Repeat cut No

Vertical repeat 63 cm

Horizontal repeat 72 cm

Drop match No

Care    

Uses    

Martindale test 20 000 T

Weight / Linear metre 740 g

# LELIEVRE

PARIS



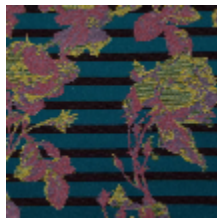
## Available colours



3615-01  
**CROISIÈRE -  
NATUREL**



3615-02  
**CROISIÈRE -  
BERGAMOTE**



3615-03  
**CROISIÈRE -  
BENGALE**



3615-04  
**CROISIÈRE -  
MARINE**

**CROISIERE - BENGALE**

3615-03

