

LELIEVRE

PARIS

SANTORIN - RAISIN

3617-01



A play of fading nets for this fabric woven in our manufacture (EPV - Living Heritage Company). This pattern, with its torn fishnet effect, suggests different interpretations. Whether animal, reptile or fishnet, the textile is brought to life through the eyes of the observer. Available in six natural colours, the range is fresh and lively, with a summery touch.

Collection	LA CROISIERE S'AMUSE
------------	----------------------

Brand	JEAN PAUL GAULTIER
-------	--------------------

TECHNICAL DATA

Composition	Cotton 61% - Polyamide 39%
-------------	----------------------------

Width	141 cm
-------	--------


Repeat cut	No
------------	----

Vertical repeat	31 cm
-----------------	-------

Horizontal repeat	36 cm
-------------------	-------

Drop match	No
------------	----

Care	   
------	---

Uses	   
------	---

Martindale test	50 000 T
-----------------	----------

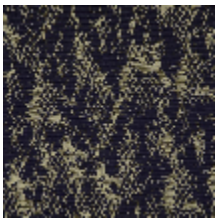
Weight / Linear metre	430 g
-----------------------	-------

LELIEVRE

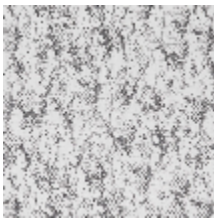
PARIS



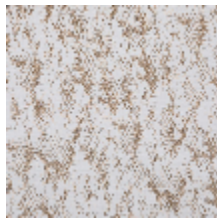
Available colours



3617-01
**SANTORIN -
RAISIN**



3617-02
**SANTORIN - NOIR
ECRU**



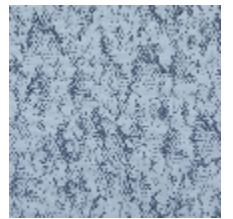
3617-03
**SANTORIN -
CAMEL**



3617-04
**SANTORIN -
LIMONCELLO**



3617-05
**SANTORIN -
CELADON**



3617-06
**SANTORIN -
ACQUA**

SANTORIN - RAISIN

3617-01

