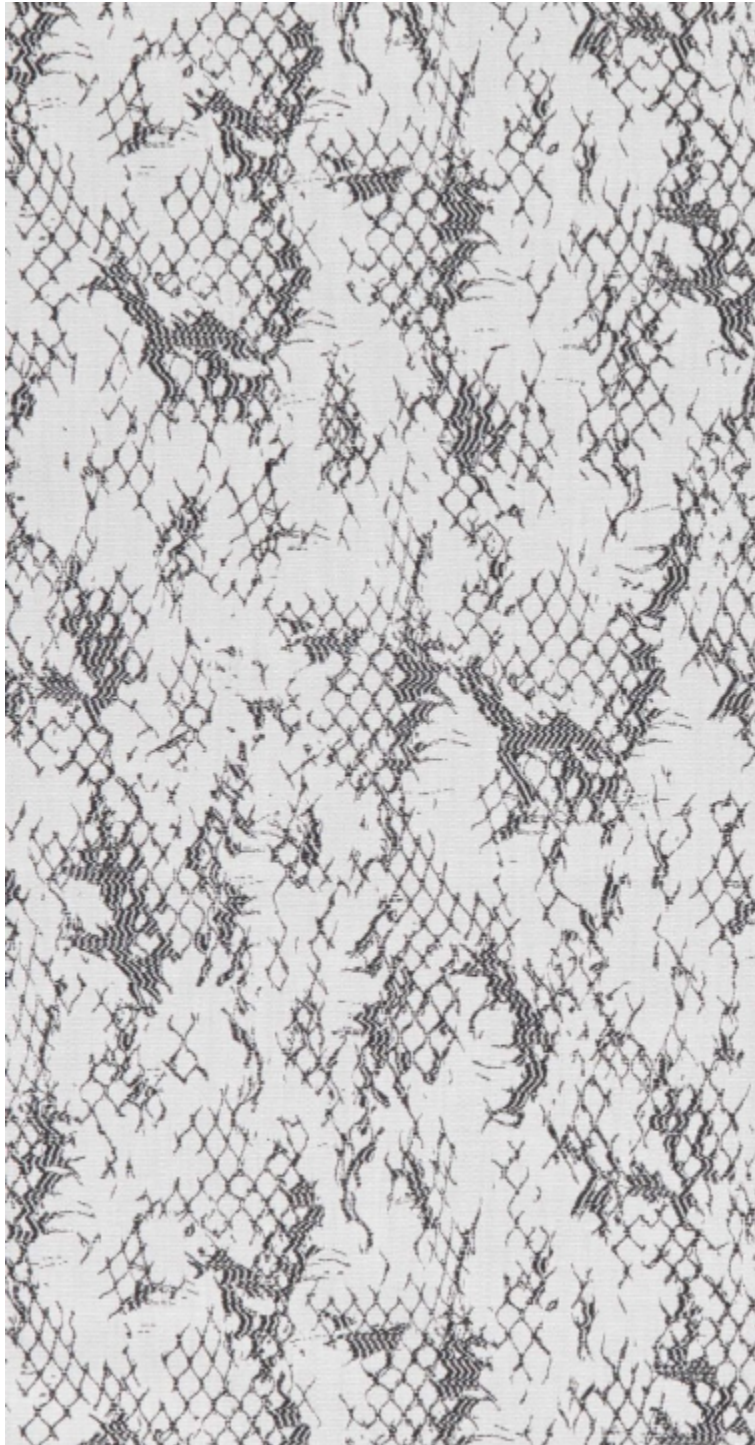


SANTORIN - NOIR ECRU

3617-02



A play of fading nets for this fabric woven in our manufacture (EPV - Living Heritage Company). This pattern, with its torn fishnet effect, suggests different interpretations. Whether animal, reptile or fishnet, the textile is brought to life through the eyes of the observer. Available in six natural colours, the range is fresh and lively, with a summery touch.

Collection LA CROISIERE S'AMUSE

Brand JEAN PAUL GAULTIER

TECHNICAL DATA

Composition Cotton 61% - Polyamide 39%


Width 141 cm

Repeat cut No

Vertical repeat 31 cm

Horizontal repeat 36 cm

Drop match No

Care    

Uses    

Martindale test 50 000 T

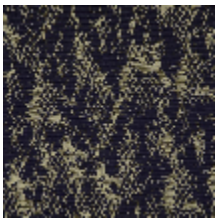
Weight / Linear metre 430 g

LELIEVRE

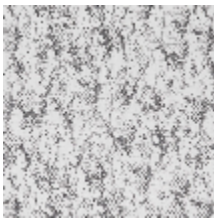
PARIS



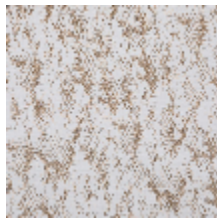
Available colours



3617-01
**SANTORIN -
RAISIN**



3617-02
**SANTORIN - NOIR
ECRU**



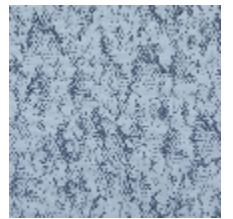
3617-03
**SANTORIN -
CAMEL**



3617-04
**SANTORIN -
LIMONCELLO**



3617-05
**SANTORIN -
CELADON**



3617-06
**SANTORIN -
ACQUA**

SANTORIN - NOIR ECRU

3617-02

