

LELIEVRE

PARIS

JAVANAISE - INDIGO

3618-03



A play of fading nets with its torn fishnet effect, suggests different interpretations, whether animals, reptiles or fishnet, declined in fresh and lively colours, with a summery touch.



Collection LA CROISIERE S'AMUSE

Brand JEAN-PAUL GAULTIER

TECHNICAL DATA

Composition Cotton 100%


Width 142 cm

Repeat cut No

Vertical repeat 71 cm

Horizontal repeat 70 cm

Drop match No

Care    

Uses    

Martindale test 25 000 T

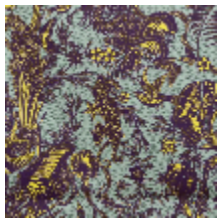
Weight / Linear metre 380 g

LELIEVRE

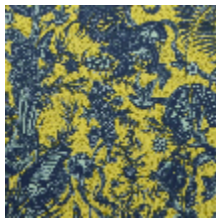
PARIS



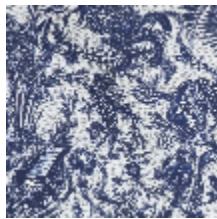
Available colours



3618-01
**JAVANAISE -
CELADON**



3618-02
**JAVANAISE -
LIMONCELLO**



3618-03
**JAVANAISE -
INDIGO**

LELIEVRE

PARIS

JAVANAISE - INDIGO

3618-03

