

**LAMPAS ST SIMON - BLEU**

4006-01



Silk and Linen lampas decorated with motifs of vases of flowers, horns of plenty and swags.

---

Brand QUENIN

---

**TECHNICAL DATA**

---

Composition Linen 62% - Silk 38%

---

Width 65 cm

---

Repeat cut Yes

---

Vertical repeat 65 cm


---

Drop match No

---

Care   

---

Uses    

---

Weight / Linear metre 175 g

---

# LELIEVRE

PARIS

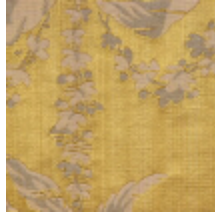
## Available colours



4006-01  
**LAMPAS ST**  
**SIMON - BLEU**



4006-02  
**LAMPAS ST**  
**SIMON - ROUGE**



4006-03  
**LAMPAS ST**  
**SIMON - OR**

**LAMPAS ST SIMON - BLEU**

4006-01

