

**MASSENA SEME - ROUGE**

4010-01



Scattered with palm leaves around the central motif of Massena (ref 4009) to complement the decoration or for the backs of seats.

---

Brand	QUENIN
-------	--------

---

## TECHNICAL DATA

---

Composition	Silk 69% - Cotton 31%
-------------	-----------------------

---

Width	130 cm
-------	--------

---

Repeat cut	No
------------	----

---

Vertical repeat	12 cm
-----------------	-------


---

Drop match	No
------------	----

---

Care	   
------	---

---

Uses	   
------	---

---

Weight / Linear metre	295 g
-----------------------	-------

---

# LELIEVRE

PARIS

## Available colours



4010-01

**MASSENA SEME -  
ROUGE**



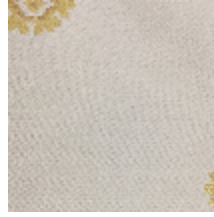
4010-02

**MASSENA SEME -  
VERT**



4010-03

**MASSENA SEME -  
OR**



4010-04

**MASSENA SEME -  
BLANC**



LELIEVRE  
PARIS

**MASSENA SEME - ROUGE**

4010-01

