

**DAMAS RECTA - PAILLE**

4021-21



Louis XV damask with central bouquets in a setting of scattered flowers and curving foliage.

---

Brand	QUENIN
-------	--------

---

## TECHNICAL DATA

---

Type	Damasks & Lampas
------	------------------

---

Composition	Viscose 58% - Cotton 42%
-------------	--------------------------

---

Width	130 cm
-------	--------

---

Repeat cut	No
------------	----

---

Vertical repeat	39 cm
-----------------	-------

---

Half drop match	No
-----------------	----

---

Care	  
------	---

---

Uses	   
------	---

---

Weight / Linear metre	295 g
-----------------------	-------

---

# LELIEVRE

PARIS

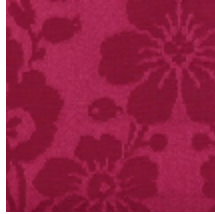
## Available colours



4021-11  
**DAMAS RECTA -  
IVOIRE**



4021-15  
**DAMAS RECTA -  
SALADE**



4021-19  
**DAMAS RECTA -  
ROUGE**



4021-20  
**DAMAS RECTA -  
NATTIER/BIS**



4021-21  
**DAMAS RECTA -  
PAILLE**



4021-22  
**DAMAS RECTA -  
VIEIL OR/BIS**

**DAMAS RECTA - PAILLE**

4021-21

