

LELIEVRE

PARIS

FAUVE - BEIGE

4031-03



FAUVE is an animal skin design, a jacquard woven in the Lelièvre mill near Lyon. It features a beautiful play on texture: a smooth and vibrant effect created by the strie wrap, and a textured effect from the viscose linen yarn. FAUVE blends perfectly with the other patterns of the collection bringing a very modern look.

Collection	RESONANCE
Brand	LELIEVRE

TECHNICAL DATA

Composition	Viscose 44% - Polyamide 37% - Linen 19%
-------------	--

Width	142 cm
-------	--------


Repeat cut	No
------------	----

Vertical repeat	24 cm
-----------------	-------

Horizontal repeat	36 cm
-------------------	-------

Drop match	No
------------	----

Care	   
------	---

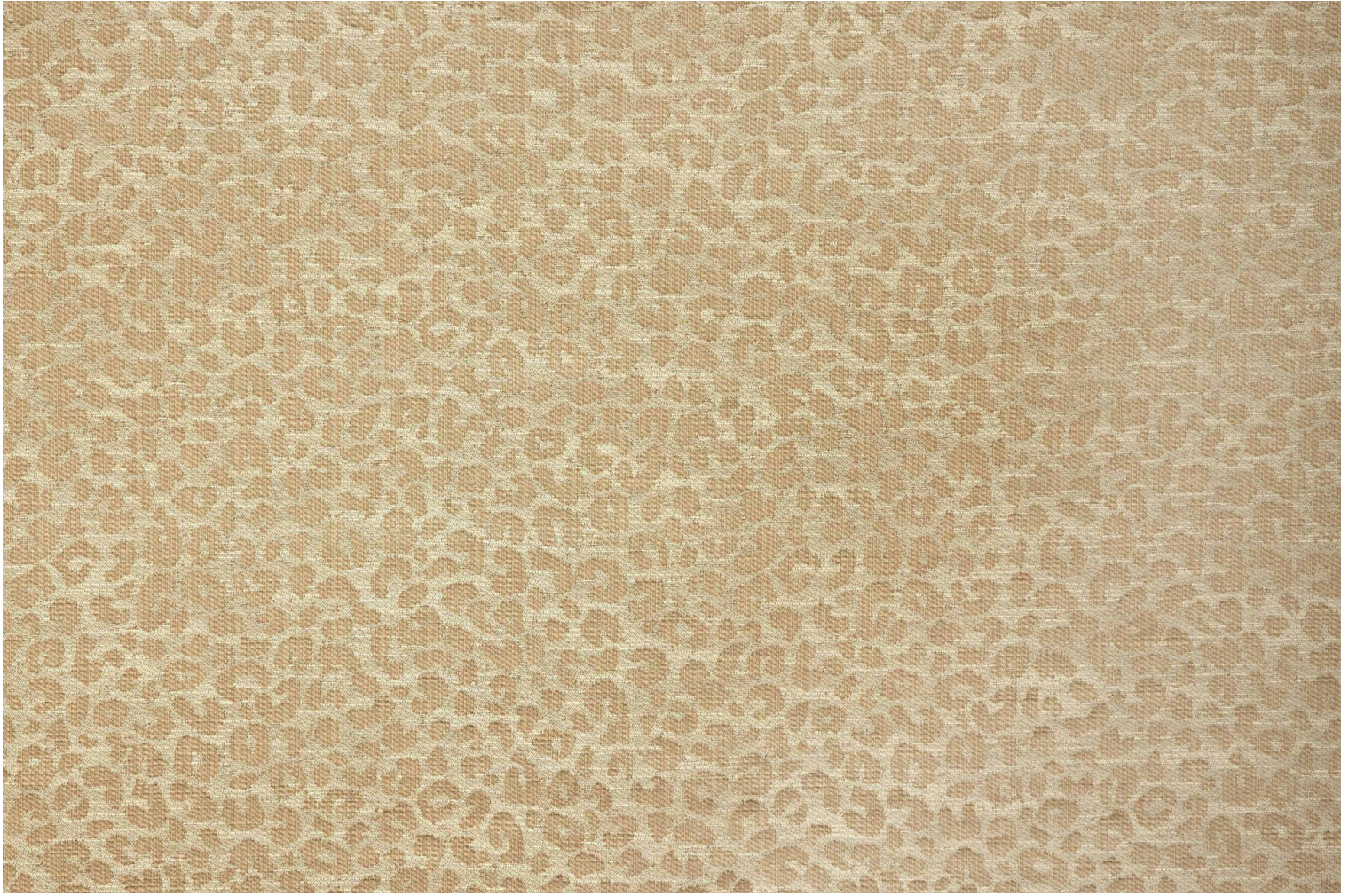
Uses	   
------	---

Martindale test	50 000 T
-----------------	----------

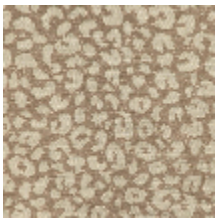
Weight / Linear metre	510 g
-----------------------	-------

LELIEVRE

PARIS



Available colours



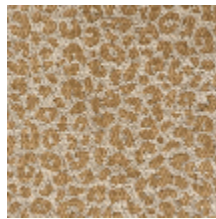
4031-01
FAUVE - PERLE



4031-02
FAUVE - ECRU



4031-03
FAUVE - BEIGE



4031-04
FAUVE - OR



4031-05
FAUVE - BRUN



4031-06
**FAUVE -
CARMEL**

LELIEVRE

PARIS

FAUVE - BEIGE

4031-03

