

# LELIEVRE

PARIS

## FAUVE - BRUN

4031-05



FAUVE is an animal skin design, a jacquard woven in the Lelièvre mill near Lyon. It features a beautiful play on texture: a smooth and vibrant effect created by the strie wrap, and a textured effect from the viscose linen yarn. FAUVE blends perfectly with the other patterns of the collection bringing a very modern look.

Collection **RESONANCE**

Brand **LELIEVRE**

### TECHNICAL DATA

Composition **Viscose 44% - Polyamide 37%  
- Linen 19%**

Width **142 cm**

Repeat cut **No**

Vertical repeat **24 cm**

Horizontal repeat **36 cm**

Drop match **No**

Care 

Uses 

Martindale test **50 000 T**

Weight / Linear metre **510 g**

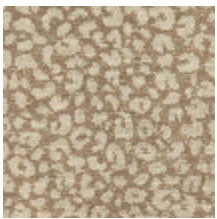


# LELIEVRE

PARIS



## Available colours



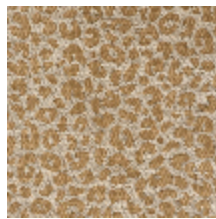
4031-01  
**FAUVE - PERLE**



4031-02  
**FAUVE - ECRU**



4031-03  
**FAUVE - BEIGE**



4031-04  
**FAUVE - OR**



4031-05  
**FAUVE - BRUN**



4031-06  
**FAUVE -  
CAMEL**



# LELIEVRE

PARIS

## FAUVE - BRUN

4031-05

