

# LELIEVRE

PARIS

## FAUVE - CARAMEL

4031-06



FAUVE is an animal skin design, a jacquard woven in the Lelièvre mill near Lyon. It features a beautiful play on texture: a smooth and vibrant effect created by the strie wrap, and a textured effect from the viscose linen yarn. FAUVE blends perfectly with the other patterns of the collection bringing a very modern look.

Collection	RESONANCE
Brand	LELIEVRE

### TECHNICAL DATA

Composition	Viscose 44% - Polyamide 37% - Linen 19%
-------------	--

Width	142 cm
-------	--------

Repeat cut	No
------------	----

Vertical repeat	24 cm
-----------------	-------

Horizontal repeat	36 cm
-------------------	-------

Drop match	No
------------	----

Care	   
------	---

Uses	   
------	---

Martindale test	50 000 T
-----------------	----------

Weight / Linear metre	510 g
-----------------------	-------

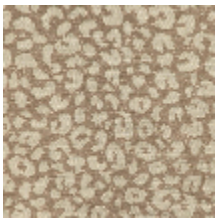


# LELIEVRE

PARIS



## Available colours



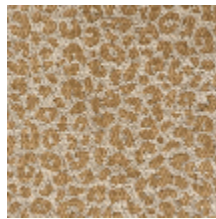
4031-01  
**FAUVE - PERLE**



4031-02  
**FAUVE - ECRU**



4031-03  
**FAUVE - BEIGE**



4031-04  
**FAUVE - OR**



4031-05  
**FAUVE - BRUN**



4031-06  
**FAUVE -  
CAMEL**



**FAUVE - CARMEL**

4031-06

