

LELIEVRE

PARIS

COLONNE MI - CRAIE *

4224-01



Colonne is a broad stripe in tone on tone colours with alternating shiny and matt bands. The structure brings a classic touch to the collection and also perfectly complements the colours of fabrics such as the brocatelle Cuba. Timeless, the neutral tones enrich our Contract curtain offering.

Collection **COLLECTION 19**

Brand **LELIEVRE PARIS CONTRACT**

TECHNICAL DATA

Composition **Polyester TREVIRA CS 100%**

Width **140 cm**

Repeat cut **No**

Horizontal repeat **23 cm**

Drop match **No**

Care   

Uses    

Weight / Linear metre **395 g**

Fire rating **MI - IMO PART 7**

LELIEVRE

PARIS



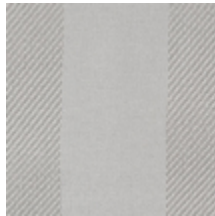
Available colours



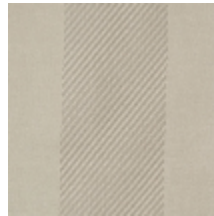
4224-01
**COLONNE M1 -
CRAIE ***



4224-02
**COLONNE M1 -
IVOIRE ***



4224-03
**COLONNE M1 -
PERLE ***



4224-04
**COLONNE M1 -
PLATINE ***



4224-05
**COLONNE M1 -
FUMEE ***



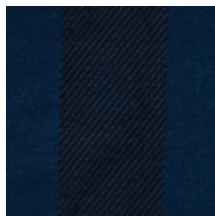
4224-06
**COLONNE M1 -
AURORE ***



4224-07
**COLONNE M1 -
EQUATEUR ***



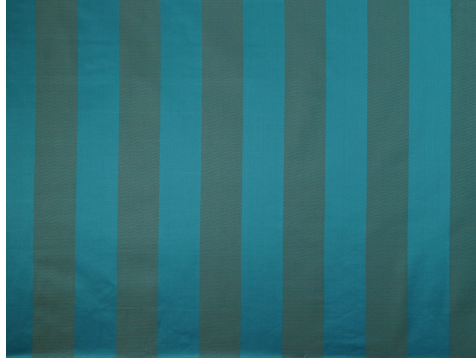
4224-10
**COLONNE M1 -
CUIVRE ***



4224-11
**COLONNE M1 -
NUIT ***

COLONNE M1 - CRAIE *

4224-01



LELIEVRE

PARIS

