

BLASON - PRUSSE

4234-01



Round and generous, a motif framed by garlands of stylised foliage inspired by the Renaissance. The weaving is executed in a cotton thread emphasising the light with an attractive raffia-like thread. For use as upholstery, curtains or wall coverings. A palette of 5 luminous colors renews our classic fabrics.

Brand QUENIN

TECHNICAL DATA

Composition Cotton 64% - Viscose 36%

Width 140 cm

Repeat cut No

Vertical repeat 60 cm

Horizontal repeat 36 cm

Drop match No

Care





Uses





Martindale test 40 000 T

Weight / Linear metre 510 g

LELIEVRE

PARIS



Available colours



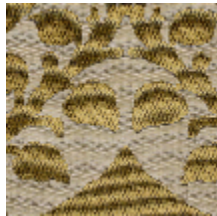
4234-01

BLASON - PRUSSE



4234-02

**BLASON -
CORNALINE**



4234-03

BLASON - OR



4234-04

**BLASON -
VERMEIL**



4234-05

**BLASON -
CENDRE**

BLASON - PRUSSE

4234-01

