

**VETIVER MI - BERGAMOTE**

4241-03

# LELIEVRE

PARIS



Vetiver. An essence as fine as it is complex, creating the look of vegetation...the brocatelle has a spectacular raised design. The matt, cotton-look warp contrasts against the metallic background like a bas-relief. Vetiver is as deep as the notes of masculine perfume from which it takes its inspiration...and it is expertly woven in our mill in Lyon in the time honoured style. 5 colourways in vibrant shades create a strong look with character, can be used for occasional seating, curtains or wall hangings.

---

Collection **COLLECTION 23**

---

Brand **LELIÈVRE PARIS CONTRACT**

---

## TECHNICAL DATA

---

Composition **Polyester TREVIRA CS 100%**

---

Width **138 cm**

---

Repeat cut **No**

---

Vertical repeat **75 cm**

---

Horizontal repeat **69 cm**

---

Drop match **No**

---

Care    

---

Uses    

---

Martindale test **20 000 T**

---

Weight / Linear metre **577 g**

---

Fire rating **M1**

---

# LELIEVRE

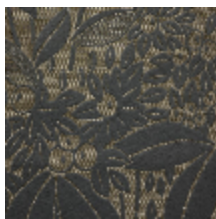
PARIS



## Available colours



4241-01  
**VETIVER M1 - IRIS**



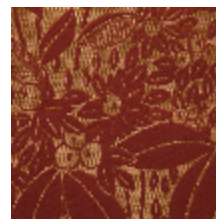
4241-02  
**VETIVER M1 -  
ENCENS**



4241-03  
**VETIVER M1 -  
BERGAMOTE**



4241-04  
**VETIVER M1 -  
JASMIN**



4241-05  
**VETIVER M1 -  
EPICE**

**VETIVER MI - BERGAMOTE**

4241-03

