

# LELIEVRE

PARIS

## RAMEAUX - PRUSSE

4245-02



A linen background strewn with sprigs of leaves coloured by the warp.

---

Collection	FLORILEGE
------------	-----------

---

Brand	QUENIN
-------	--------

---

### TECHNICAL DATA

---

Composition	Polyamide 36% - Linen 34% - Cotton 30%
-------------	--

---

Width	130 cm
-------	--------

---

Repeat cut	No
------------	----

---

Vertical repeat	14 cm
-----------------	-------

---

Horizontal repeat	32 cm
-------------------	-------

---

Drop match	No
------------	----

---

Care	  
------	---

---

Uses	   
------	---

---

Martindale test	40 000 T
-----------------	----------

---

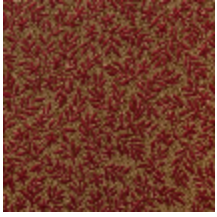
Weight / Linear metre	390 g
-----------------------	-------

---

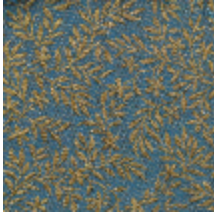
# LELIEVRE

PARIS

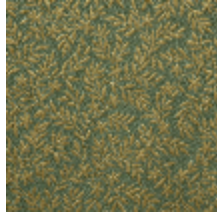
## Available colours



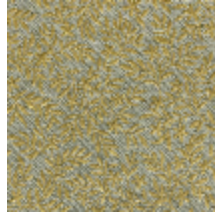
4245-01  
**RAMEAUX -  
CRAMOISI**



4245-02  
**RAMEAUX -  
PRUSSE**



4245-03  
**RAMEAUX -  
AMANDE**



4245-04  
**RAMEAUX -  
VERMEIL**



4245-05  
**RAMEAUX -  
NATUREL**