

RAMEAUX - AMANDE

4245-03



A linen background strewn with sprigs of leaves coloured by the warp.

Collection	FLORILEGE
------------	-----------

Brand	QUENIN
-------	--------

TECHNICAL DATA

Composition	Polyamide 36% - Linen 34% - Cotton 30%
-------------	--

Width	130 cm
-------	--------

Repeat cut	No
------------	----

Vertical repeat	14 cm
-----------------	-------

Horizontal repeat	32 cm
-------------------	-------

Drop match	No
------------	----

Care	   
------	---

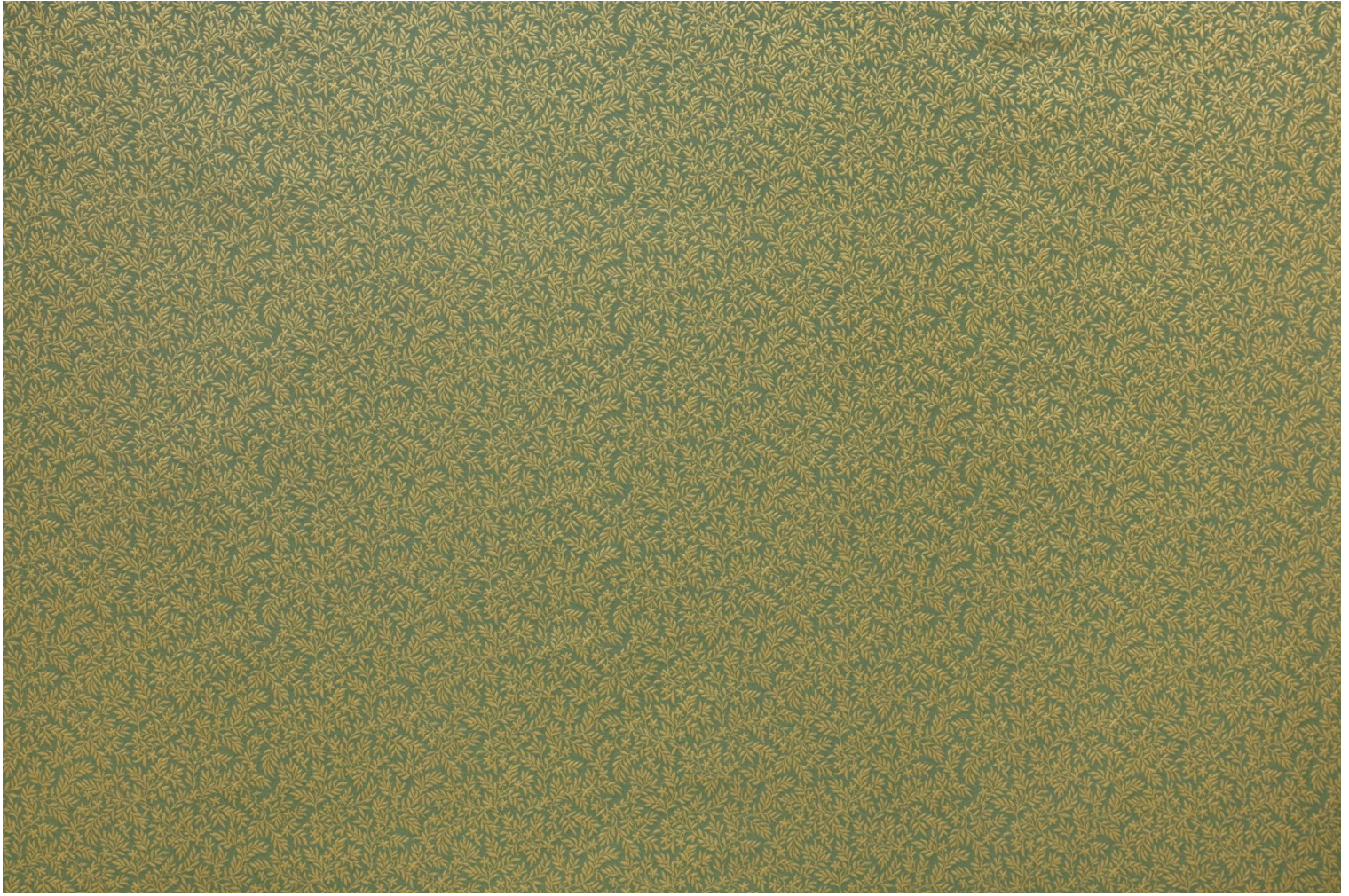
Uses	   
------	---

Martindale test	40 000 T
-----------------	----------

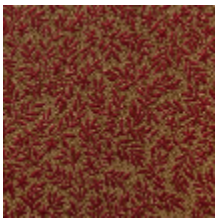
Weight / Linear metre	390 g
-----------------------	-------

LELIEVRE

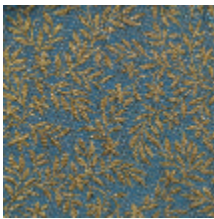
PARIS



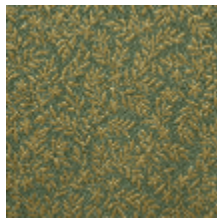
Available colours



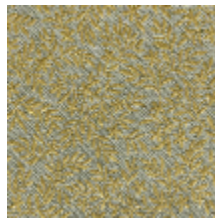
4245-01
**RAMEAUX -
CRAMOISI**



4245-02
**RAMEAUX -
PRUSSE**



4245-03
**RAMEAUX -
AMANDE**



4245-04
**RAMEAUX -
VERMEIL**



4245-05
**RAMEAUX -
NATUREL**