

**DIAMANT - JADE**

4248-08



A small triangle, tie design like a faux-uni full of character yet easy to use. Diamant is a contrast of matt and sheen due to its considered construction : a satin warp ground with micro diamonds with a reflective centre like precious stones delicately strewn over a matt thread enhancing the vividness of the colours. Ideal for small upholstered pieces in sophisticated, refined interior. Multiple use.

Collection	CONTRACT 24
------------	-------------

Brand	LELIÈVRE PARIS CONTRACT
-------	-------------------------

## TECHNICAL DATA


Type	Semi-plain
------	------------

Composition	Polyester TREVIRA CS 100%
-------------	---------------------------

Width	137 cm
-------	--------

Repeat cut	No
------------	----

Half drop match	No
-----------------	----

Care	  
------	---

Uses	   
------	---

Martindale test	40 000 T
-----------------	----------

Weight / Linear metre	485 g
-----------------------	-------

Fire rating	MI - IMO PART 7&8
-------------	-------------------

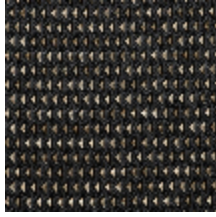
# LELIEVRE

PARIS

## Available colours



4248-01  
**DIAMANT - LAPIS**



4248-02  
**DIAMANT - ONYX**



4248-03  
**DIAMANT - GRAPHITE**



4248-04  
**DIAMANT - MICA**



4248-05  
**DIAMANT - CRISTAL**



4248-06  
**DIAMANT - OR**



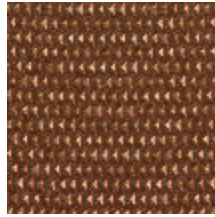
4248-07  
**DIAMANT - SOUFRE**



4248-08  
**DIAMANT - JADE**



4248-09  
**DIAMANT - SERAPHINITE**



4248-10  
**DIAMANT - CORNALINE**

**DIAMANT - JADE**

4248-08

