

DIAMANT M1 - CORNALINE

4248-10



A small triangle, tie design like a faux-uni full of character yet easy to use. Diamant is a contrast of matt and sheen due to its considered construction : a satin warp ground with micro diamonds with a reflective centre like precious stones delicately strewn over a matt thread enhancing the vividness of the colours. Ideal for small upholstered pieces in sophisticated, refined interior. Multiple use.

Collection	CONTRACT 24
------------	-------------

Brand	LELIEVRE CONTRACT
-------	-------------------


TECHNICAL DATA

Composition	Polyester TREVIRA CS 100%
-------------	---------------------------

Width	137 cm
-------	--------

Repeat cut	No
------------	----

Drop match	No
------------	----

Care	   
------	---

Uses	   
------	---

Martindale test	40 000 T
-----------------	----------

Weight / Linear metre	485 g
-----------------------	-------

Fire rating	M1
-------------	----

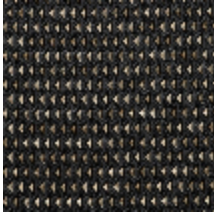
LELIEVRE

PARIS

Available colours



4248-01
**DIAMANT M1 -
LAPIS**



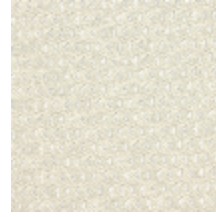
4248-02
**DIAMANT M1 -
ONYX**



4248-03
**DIAMANT M1 -
GRAPHITE**



4248-04
**DIAMANT M1 -
MICA**



4248-05
**DIAMANT M1 -
CRISTAL**



4248-06
DIAMANT M1 - OR



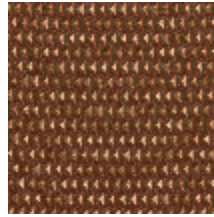
4248-07
**DIAMANT M1 -
SOUFRE**



4248-08
**DIAMANT M1 -
JADE**



4248-09
**DIAMANT M1 -
SERAPHINITE**



4248-10
**DIAMANT M1 -
CORNALINE**

DIAMANT M1 - CORNALINE

4248-10

