

# LELIEVRE

PARIS

## ARIANE MI - ABSINTHE

4256-03



A gorgeous geometric pattern consisting of diamonds accented with stripes in three colours over a slightly satiny background, creating a rhythmic contrast with textured lines emphasised by a darker underline for a shadow effect. ARIANE is available in a palette of alluring colours to create singular interiors coordinated with HERA.

Collection **CONTRACT 25**

Brand **LELIEVRE CONTRACT**

### TECHNICAL DATA

Composition **Polyester TREVIRACS 54% -  
Polyester FR 46%**

Width **138 cm**

Repeat cut **No**

Vertical repeat **22 cm**

Horizontal repeat **14 cm**

Drop match **No**

Care    

Uses    

Martindale test **50 000 T**

Weight / Linear metre **600 g**

Fire rating **MI**

# LELIEVRE

PARIS



[lelievrepairs.com](http://lelievrepairs.com)  
[contact@lelievrepairs.com](mailto:contact@lelievrepairs.com)

# LELIEVRE

PARIS

## Available colours



4256-01  
**ARIANE M1 -  
BLANC**



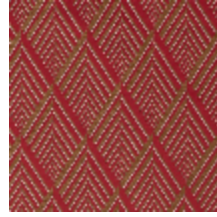
4256-02  
**ARIANE M1 -  
NATUREL**



4256-03  
**ARIANE M1 -  
ABSINTHE**



4256-04  
**ARIANE M1 -  
GAZELLE**



4256-05  
**ARIANE M1 -  
PAVOT**



4256-06  
**ARIANE M1 -  
CHOCOLAT**



4256-07  
**ARIANE M1 -  
MENTHE**

**ARIANE MI - ABSINTHE**

4256-03

