

LELIEVRE

PARIS

ARIANE MI - GAZELLE

4256-04



A gorgeous geometric pattern consisting of diamonds accented with stripes in three colours over a slightly satiny background, creating a rhythmic contrast with textured lines emphasised by a darker underline for a shadow effect. ARIANE is available in a palette of alluring colours to create singular interiors coordinated with HERA.

Collection **CONTRACT 25**

Brand **LELIEVRE CONTRACT**

TECHNICAL DATA

Composition **Polyester TREVIRACS 54% -
Polyester FR 46%**

Width **138 cm**

Repeat cut **No**

Vertical repeat **22 cm**

Horizontal repeat **14 cm**

Drop match **No**

Care    

Uses    

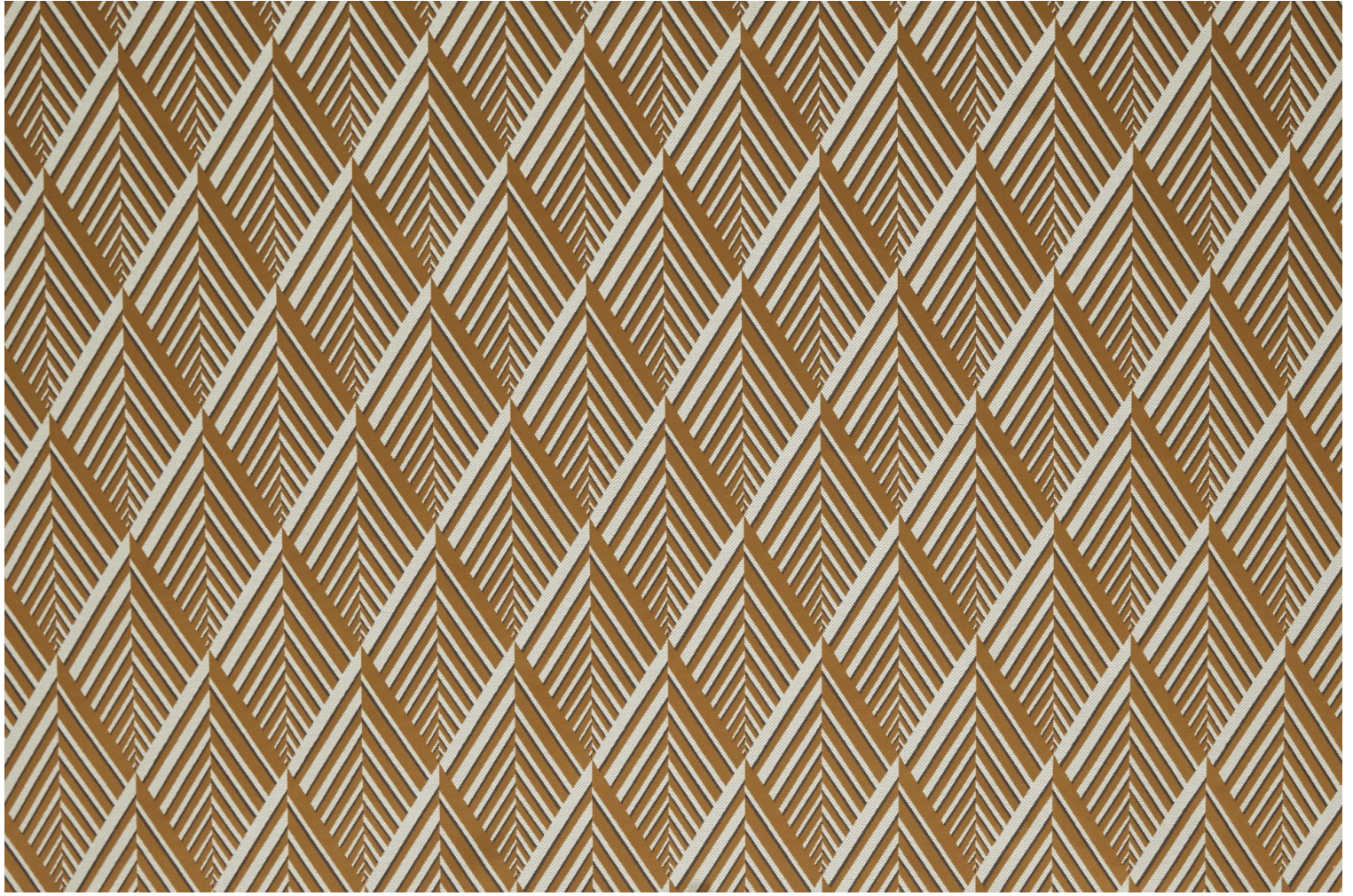
Martindale test **50 000 T**

Weight / Linear metre **600 g**

Fire rating **MI**

LELIEVRE

PARIS



lelievrepairs.com
contact@lelievrepairs.com

LELIEVRE

PARIS

Available colours



4256-01
**ARIANE M1 -
BLANC**



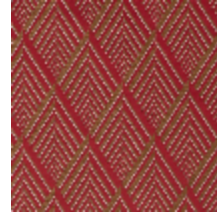
4256-02
**ARIANE M1 -
NATUREL**



4256-03
**ARIANE M1 -
ABSINTHE**



4256-04
**ARIANE M1 -
GAZELLE**



4256-05
**ARIANE M1 -
PAVOT**



4256-06
**ARIANE M1 -
CHOCOLAT**



4256-07
**ARIANE M1 -
MENTHE**

ARIANE MI - GAZELLE

4256-04

