

## ARIANE MI - MENTHE

4256-07



A gorgeous geometric pattern consisting of diamonds accented with stripes in three colours over a slightly satiny background, creating a rhythmic contrast with textured lines emphasised by a darker underline for a shadow effect. ARIANE is available in a palette of alluring colours to create singular interiors coordinated with HERA.

Collection	CONTRACT 25
------------	-------------

Brand	LELIEVRE CONTRACT
-------	-------------------

## TECHNICAL DATA

Composition	Polyester TREVIRACS 54% - Polyester FR 46%
-------------	---

Width	138 cm
-------	--------

Repeat cut	No
------------	----

Vertical repeat	22 cm
-----------------	-------

Horizontal repeat	14 cm
-------------------	-------

Drop match	No
------------	----

Care	   
------	---

Uses	   
------	---

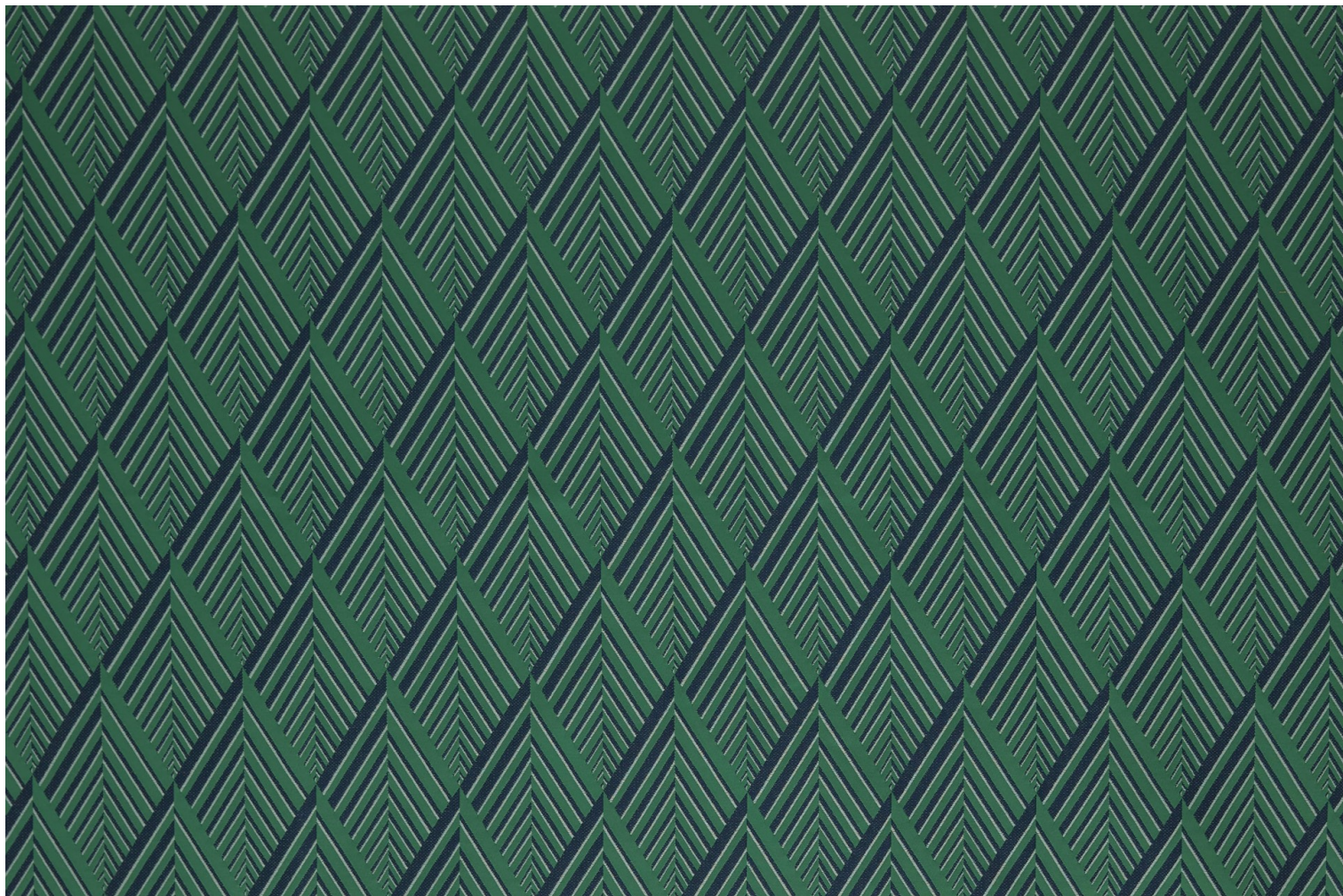
Martindale test	50 000 T
-----------------	----------

Weight / Linear metre	600 g
-----------------------	-------

Fire rating	MI
-------------	----

LELIEVRE

PARIS



# LELIEVRE

PARIS

## Available colours



4256-01  
**ARIANE M1 -  
BLANC**



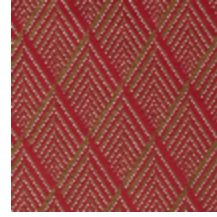
4256-02  
**ARIANE M1 -  
NATUREL**



4256-03  
**ARIANE M1 -  
ABSINTHE**



4256-04  
**ARIANE M1 -  
GAZELLE**



4256-05  
**ARIANE M1 -  
PAVOT**



4256-06  
**ARIANE M1 -  
CHOCOLAT**



4256-07  
**ARIANE M1 -  
MENTHE**

**ARIANE MI - MENTHE**

4256-07

