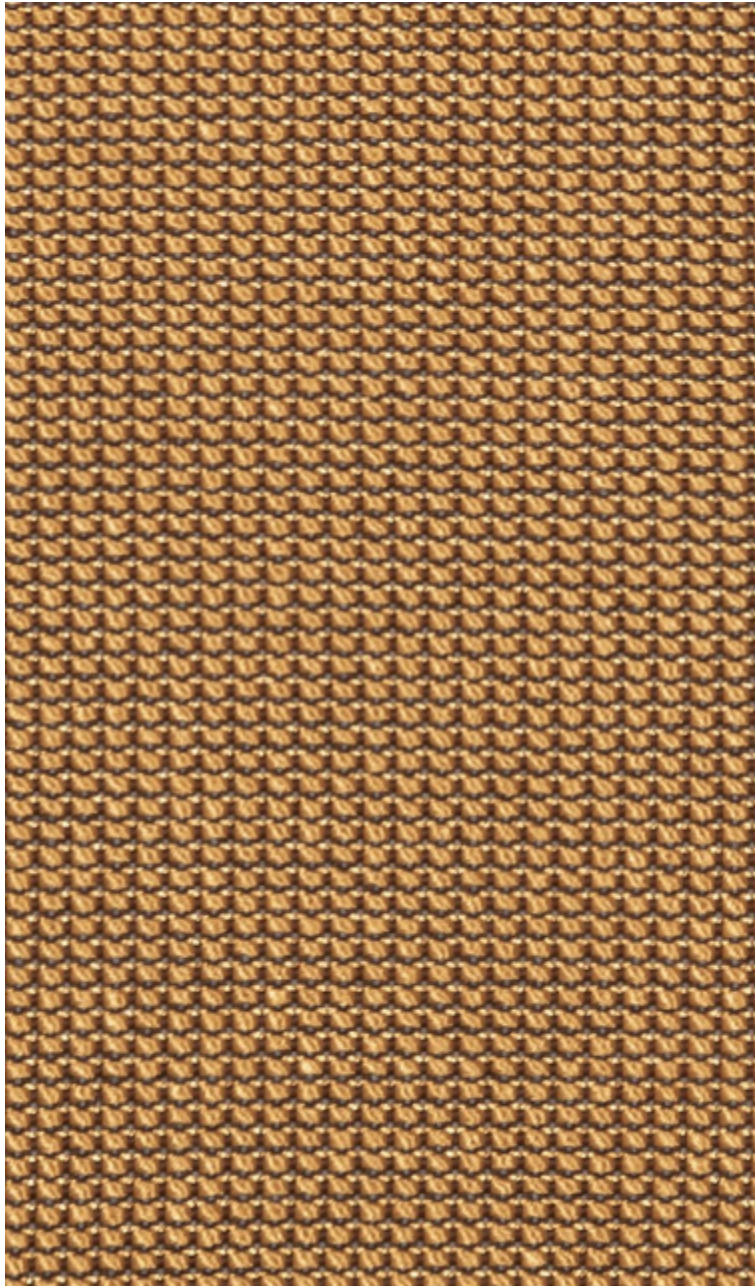


LELIEVRE

PARIS

PLATINE M1 - MORDORE

4257-06



A faux plain metallic weave with a 3D effect, PLATINE has the confident and elaborate radiance of chain mail. It consists of a palette of very soft halftones, accented by a contrasting yarn that creates a visual balance to perfectly complement the Numero 25 collection.

Collection	CONTRACT 25
------------	-------------

Brand	LELIEVRE CONTRACT
-------	-------------------

TECHNICAL DATA

Composition	Polyester FR 100%
-------------	-------------------

Width	138 cm
-------	--------

Repeat cut	No
------------	----

Drop match	No
------------	----

Care	   
------	---

Uses	   
------	---

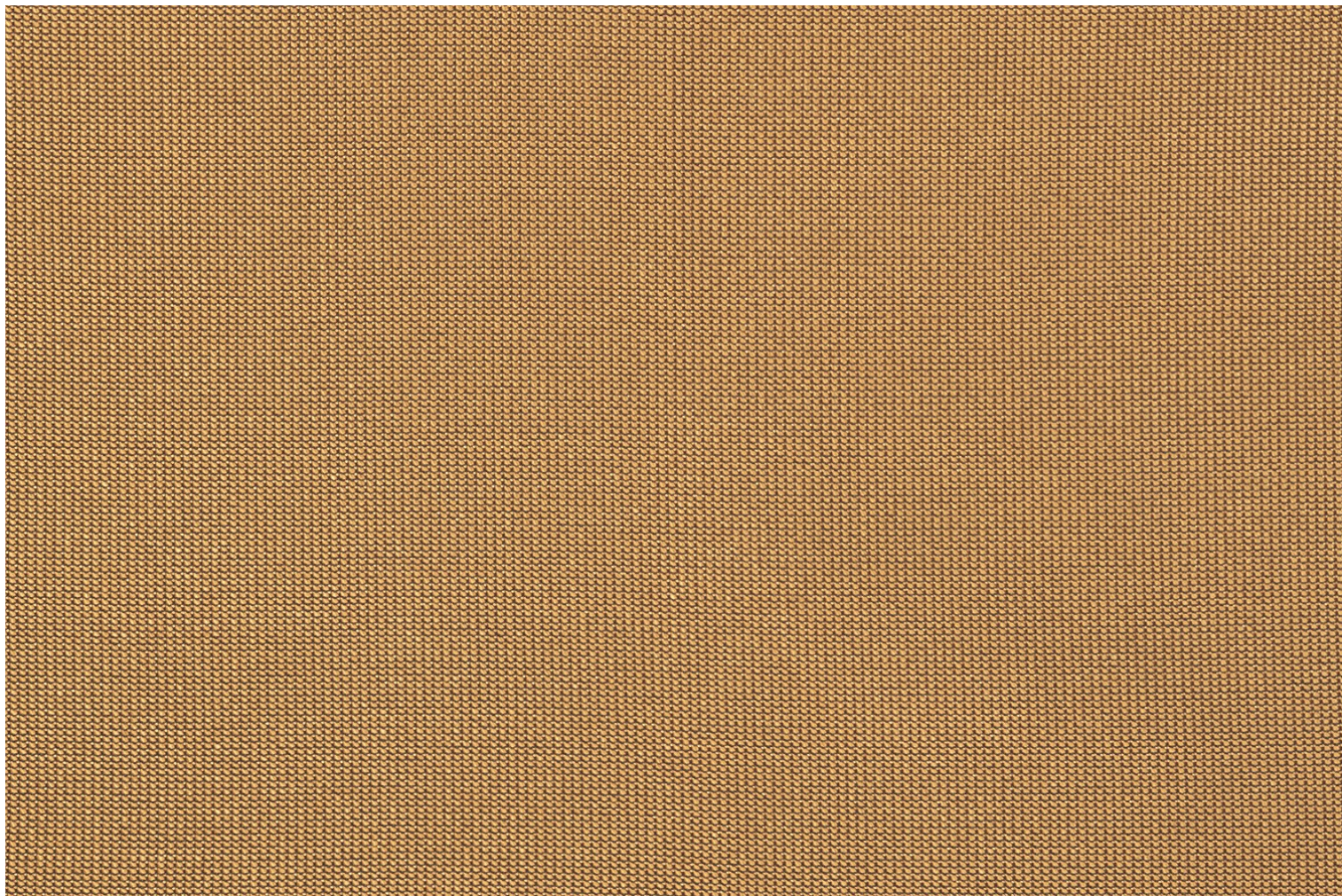
Martindale test	50 000 T
-----------------	----------

Weight / Linear metre	700 g
-----------------------	-------

Fire rating	M1
-------------	----

LELIEVRE

PARIS



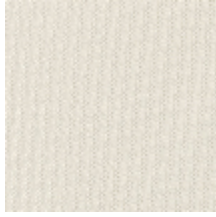
LELIEVRE

PARIS

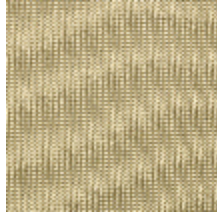
Available colours



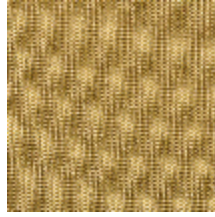
4257-01
**PLATINE M1 -
TITANE**



4257-02
**PLATINE M1 -
NACRE**



4257-03
**PLATINE M1 -
VERMEIL**



4257-04
PLATINE M1 - OR



4257-05
**PLATINE M1 -
DORE**



4257-06
**PLATINE M1 -
MORDORE**



4257-07
**PLATINE M1 -
CUIVRE**



4257-08
**PLATINE M1 -
BRONZE**



4257-09
**PLATINE M1 -
PALLADIUM**



4257-10
**PLATINE M1 -
ZINC**

PLATINE M1 – MORDORE

4257-06

