

**HERA M1 - BOIS DE ROSE**

4258-05

# LELIEVRE

PARIS



Featuring a large and structured two-colour geometric pattern, representing a maze and boasting a satiny matt finish that creates a play of light, HERA incorporates a deeply embossed texture giving it a slightly swollen aspect. The fabric drapes spectacularly well and has a wonderfully natural feel achieved thanks to a technical feat developed at Lelièvre's mill. Its bold palette of colours provides the possibility for strong, daring compositions. It is truly the masterpiece of the Numero 25 collection.

Collection **CONTRACT 25**

Brand **LELIÈVRE CONTRACT**

## TECHNICAL DATA

Composition **Polyester TREVIRACS 79% - PESFR 21%**

Width **141 cm**

Repeat cut **No**

Vertical repeat **76 cm**

Horizontal repeat **71 cm**

Drop match **No**

Care 

Uses 

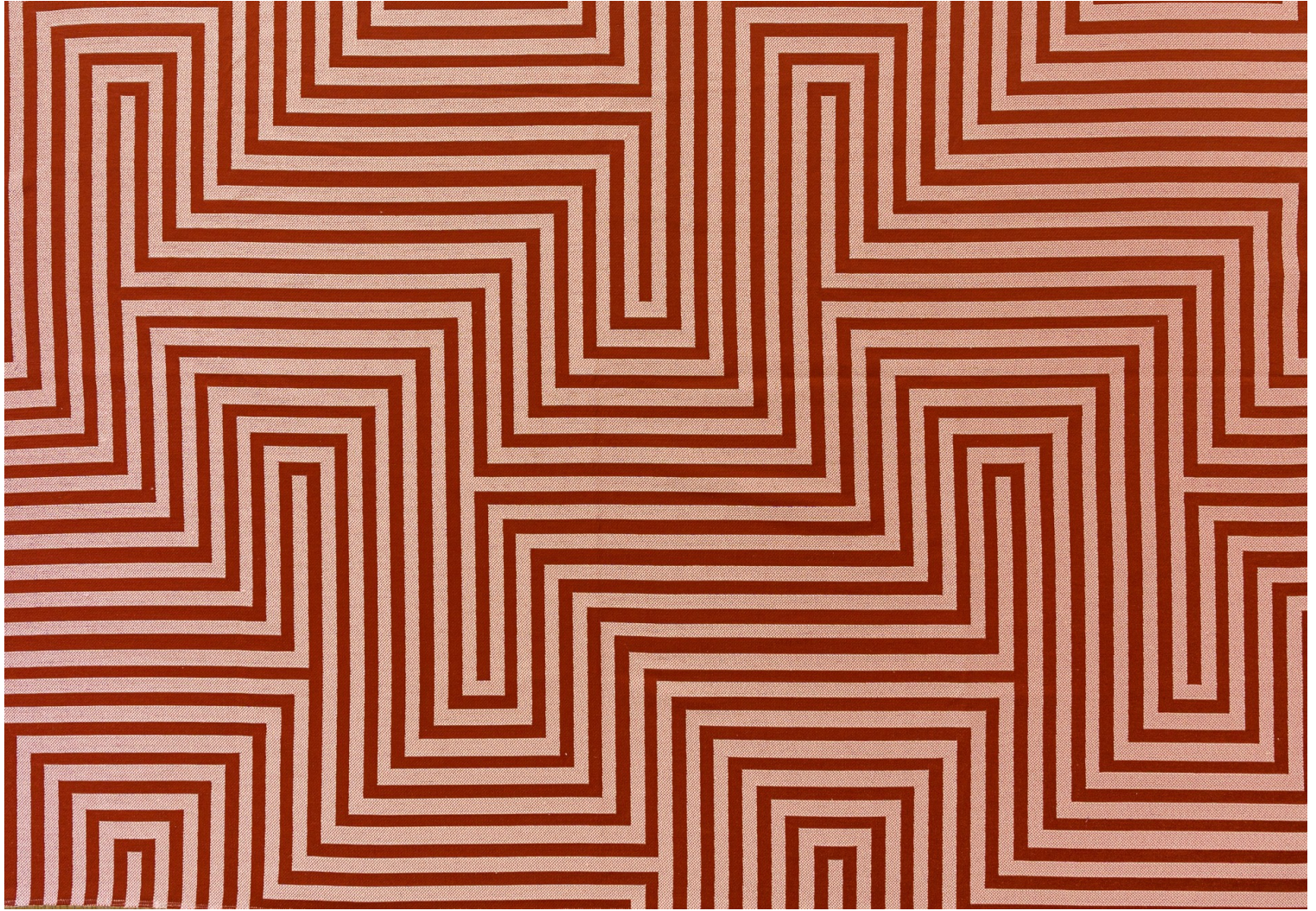
Martindale test **50 000 T**

Weight / Linear metre **890 g**

Fire rating **MI**

LELIEVRE

PARIS



lelievrepairs.com  
contact@lelievrepairs.com

# LELIEVRE

PARIS

## Available colours



4258-01  
**HERA M1 - BLANC**



4258-02  
**HERA M1 -  
NATUREL**



4258-03  
**HERA M1 -  
ABSINTHE**



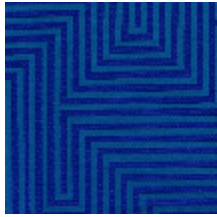
4258-04  
**HERA M1 - PAVOT**



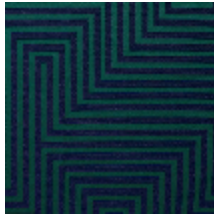
4258-05  
**HERA M1 - BOIS  
DE ROSE**



4258-06  
**HERA M1 - LAPIS**



4258-07  
**HERA M1 -  
OUTREMER**



4258-08  
**HERA M1 - FORET**

**HERA M1 - BOIS DE ROSE**

4258-05

