

# LELIEVRE

PARIS

## MYOSOTIS - DORÉ

4262-05



From a Quenin archive and with its adorable little flowers, MYOSOTIS represents the idea of the Belle Époque collection: to modernise classics with bold colours and subtle shine. Made mainly from cotton and linen, this fabric is woven in our Panisières manufacture (EPV).

Collection **BELLE ÉPOQUE**

Brand **QUENIN**

### TECHNICAL DATA

Composition **Cotton 34% Linen 30% Viscose  
24% Polyamide 12%**

Width **144 cm**

Repeat cut **No**

Vertical repeat **3 cm**

Horizontal repeat **3 cm**

Drop match **No**

Care 

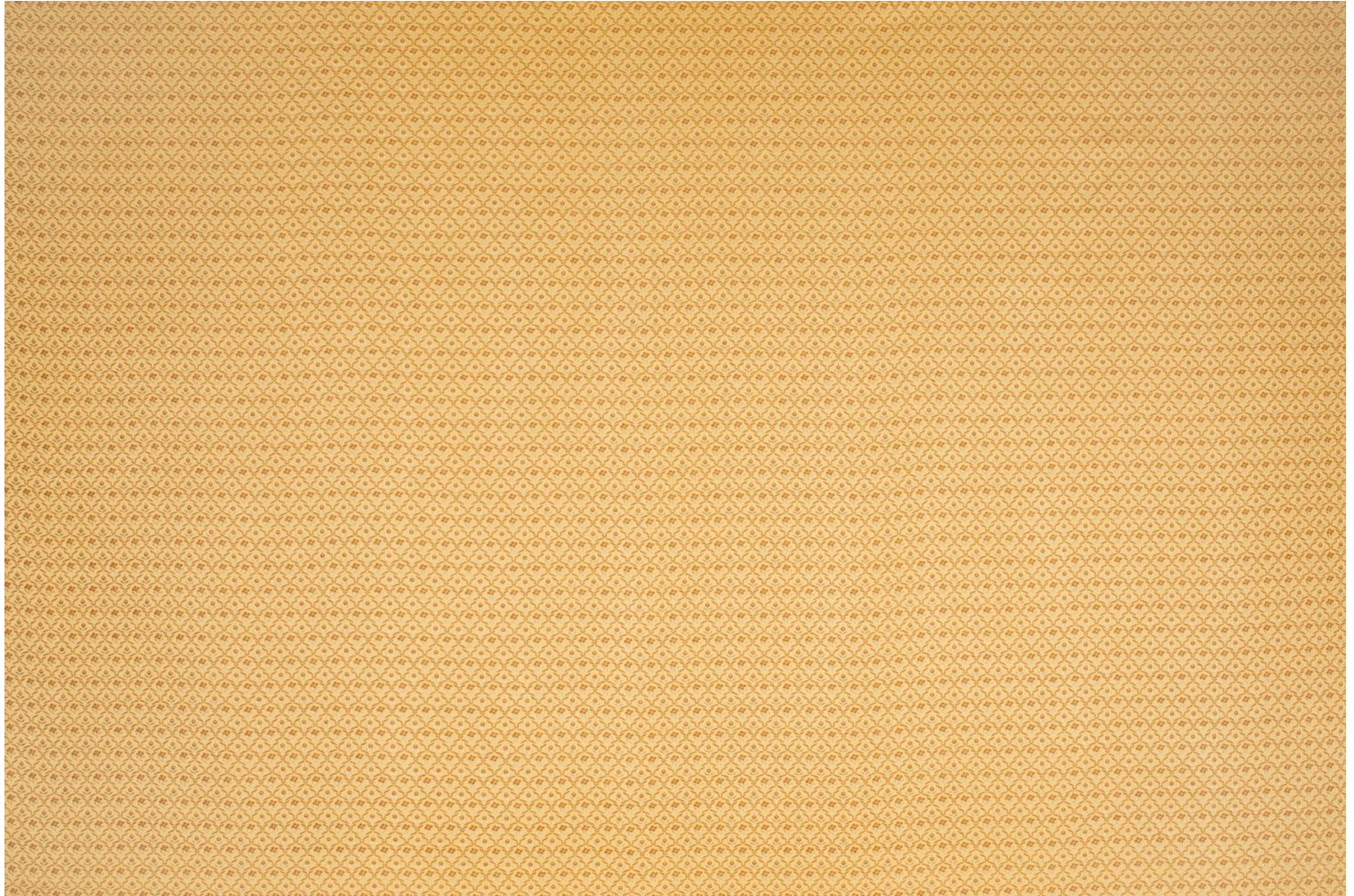
Uses 

Martindale test **20 000 T**

Weight / Linear metre **448 g**

# LELIEVRE

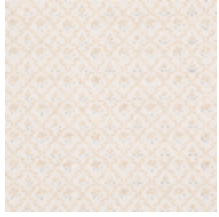
PARIS



# LELIEVRE

PARIS

## Available colours



4262-01  
**MYOSOTIS -  
NACRE**



4262-02  
**MYOSOTIS -  
NATTIER**



4262-03  
**MYOSOTIS -  
CAPUCINE**



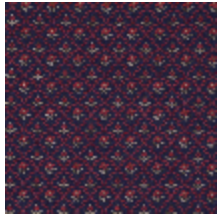
4262-04  
**MYOSOTIS -  
LAURIER**



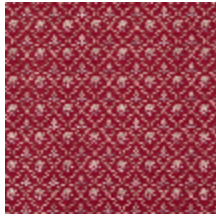
4262-05  
**MYOSOTIS -  
DORÉ**



4262-06  
**MYOSOTIS - BUIS**



4262-07  
**MYOSOTIS -  
ENCRE**



4262-08  
**MYOSOTIS -  
GRIOTTE**

**MYOSOTIS - DORÉ**

4262-05

