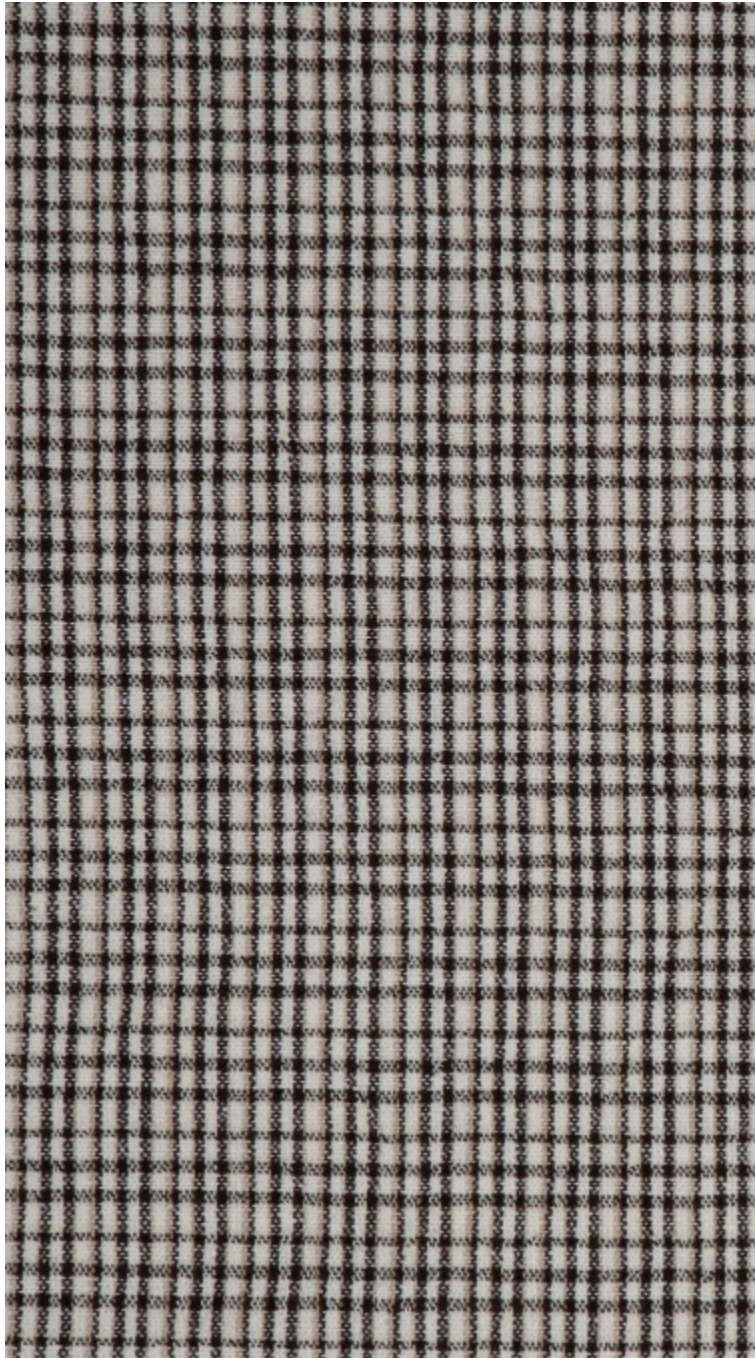


**CAMBREMER - ÉBÈNE**

4265-03



Available in 15 colours and made from 100% natural fibres (linen, cotton and hemp), CAMBREMER revisits the famous Vichy pattern with a vintage washed effect, irregular in design. With its elegant fall, it is perfect as a curtain.

Collection	BELLE ÉPOQUE
------------	--------------

Brand	QUENIN
-------	--------

---

**TECHNICAL DATA**


---

Composition	Cotton 50% - Linen 25% - True hemp 25%
-------------	--

Width	150 cm
-------	--------

Repeat cut	No
------------	----

Vertical repeat	2 cm
-----------------	------

Horizontal repeat	2 cm
-------------------	------

Drop match	No
------------	----

Care	
------	--

Uses	
------	--

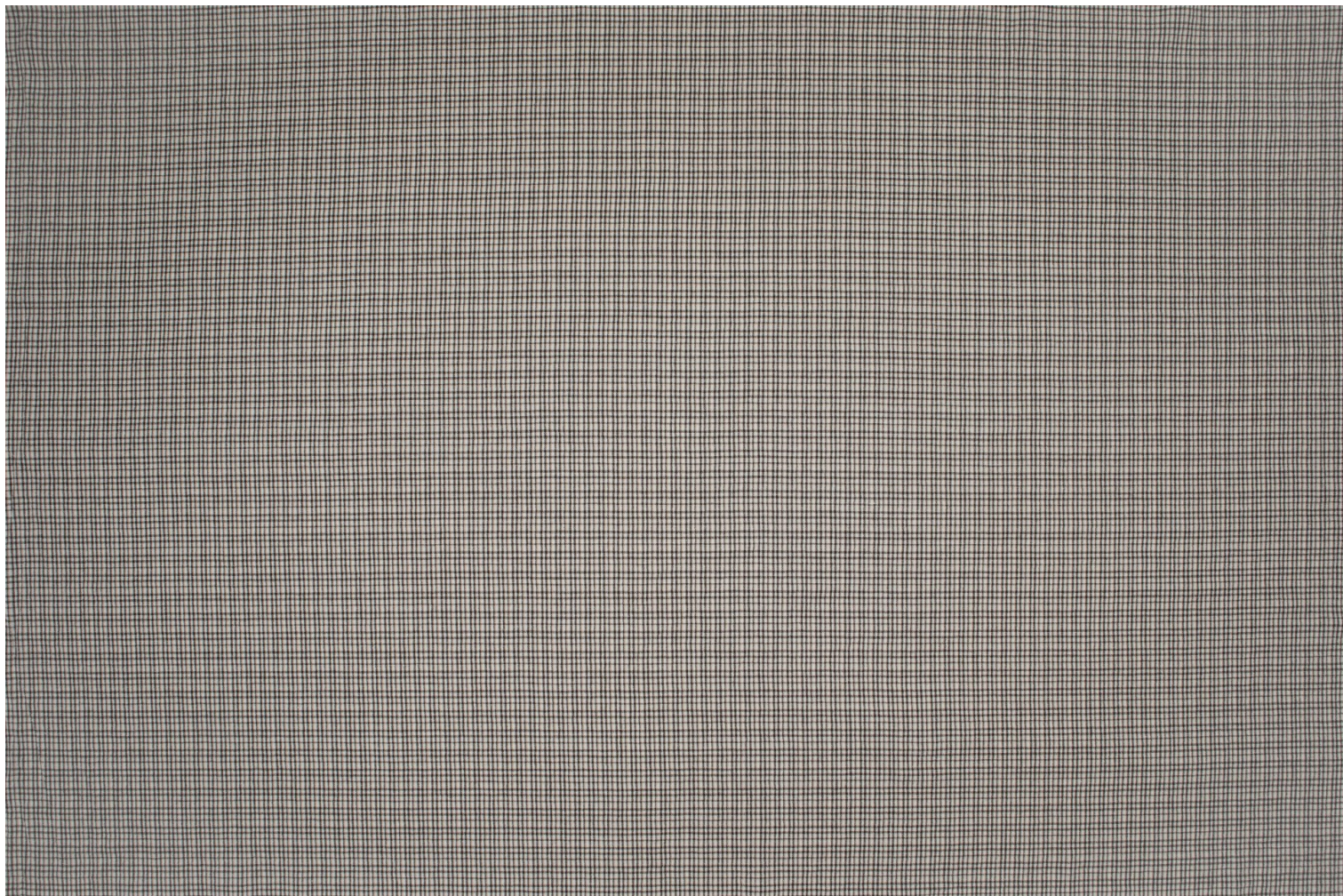
Martindale test	20 000 T
-----------------	----------

Weight / Linear metre	410 g
-----------------------	-------

---

# LELIEVRE

PARIS



# LELIEVRE

PARIS

## Available colours



4265-01  
**CAMBREMER -  
PERLE**



4265-02  
**CAMBREMER -  
BEIGE**



4265-03  
**CAMBREMER -  
ÉBÈNE**



4265-04  
**CAMBREMER -  
OCRE**



4265-05  
**CAMBREMER -  
TOURNESOL**



4265-06  
**CAMBREMER -  
CORNALINE**



4265-07  
**CAMBREMER -  
BURGUNDY**



4265-08  
**CAMBREMER -  
GRLOTTE**



4265-09  
**CAMBREMER -  
PÉTALE**



4265-10  
**CAMBREMER -  
PORCELAINE**



4265-11  
**CAMBREMER -  
CIEL**



4265-12  
**CAMBREMER -  
ENCRE**



4265-13  
**CAMBREMER -  
AGAVE**



4265-14  
**CAMBREMER -  
PRAIRIE**



4265-15  
**CAMBREMER -  
KAKI**

**CAMBREMER - ÉBÈNE**

4265-03

