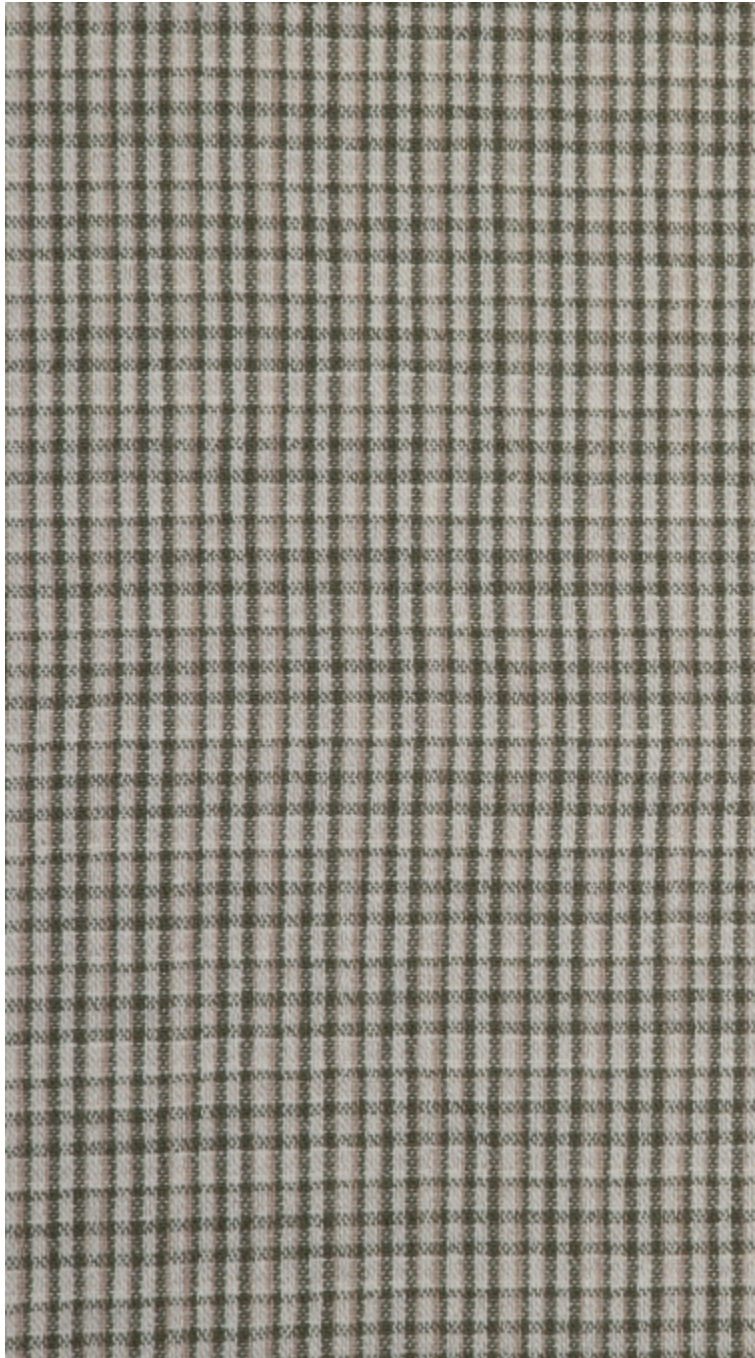


# LELIEVRE

PARIS

## CAMBREMER - KAKI

4265-15



Available in 15 colours and made from 100% natural fibres (linen, cotton and hemp), CAMBREMER revisits the famous Vichy pattern with a vintage washed effect, irregular in design. With its elegant fall, it is perfect as a curtain.

---

Collection	BELLE ÉPOQUE
------------	--------------

---

Brand	QUENIN
-------	--------

---

### TECHNICAL DATA

---

Composition	Cotton 50% - Linen 25% - True hemp 25%
-------------	--

---

Width	150 cm
-------	--------

---

Repeat cut	No
------------	----

---

Vertical repeat	2 cm
-----------------	------

---

Horizontal repeat	2 cm
-------------------	------

---

Drop match	No
------------	----

---

Care	   
------	---

---

Uses	   
------	---

---

Martindale test	20 000 T
-----------------	----------

---

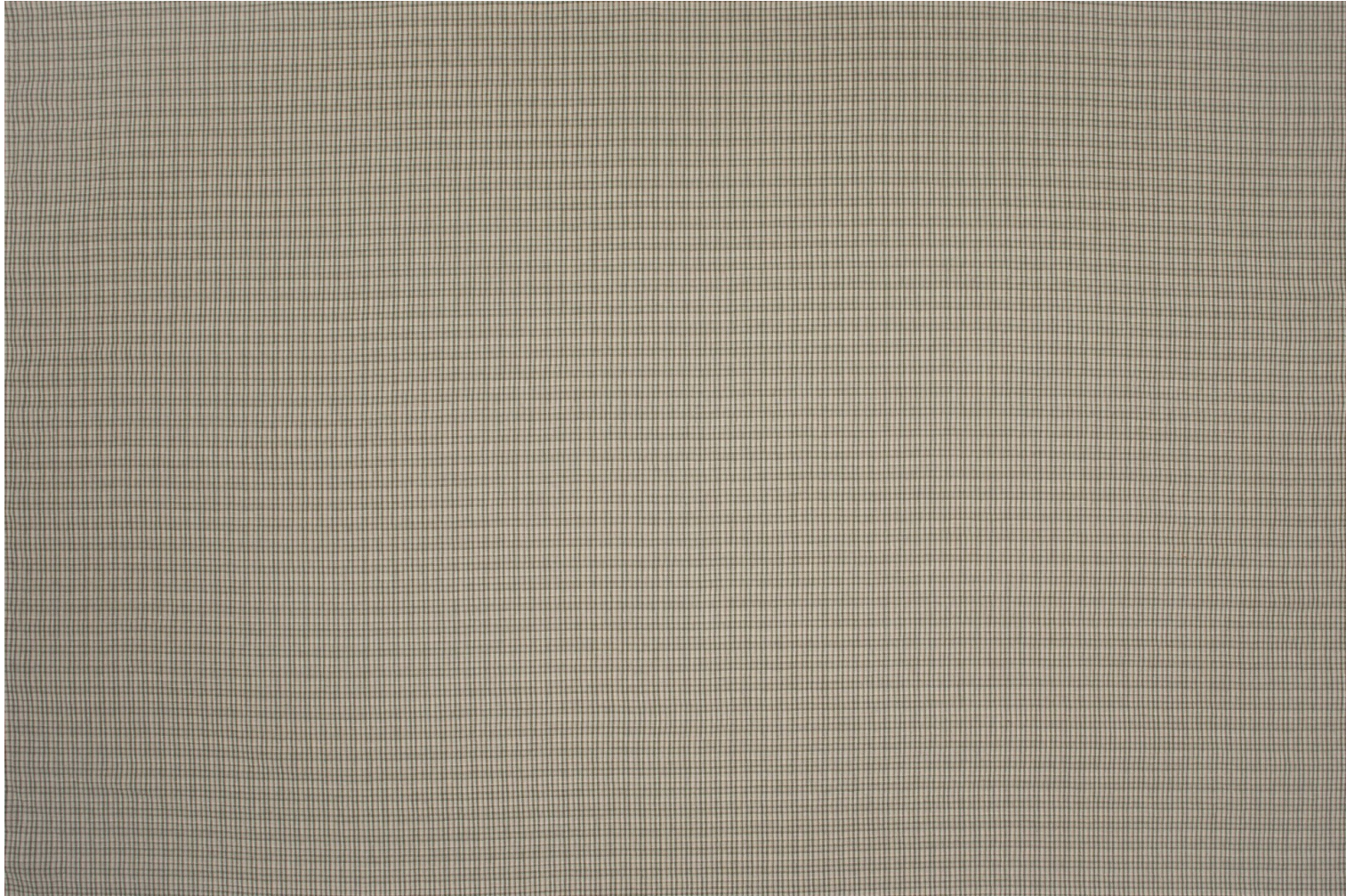
Weight / Linear metre	410 g
-----------------------	-------

---



# LELIEVRE

PARIS





# LELIEVRE

PARIS

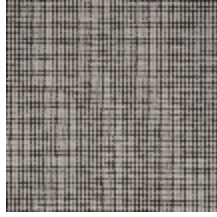
## Available colours



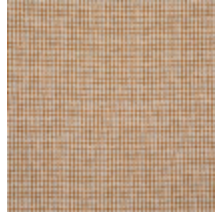
4265-01  
**CAMBREMER -  
PERLE**



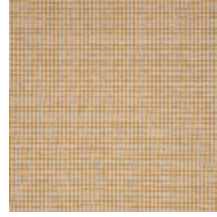
4265-02  
**CAMBREMER -  
BEIGE**



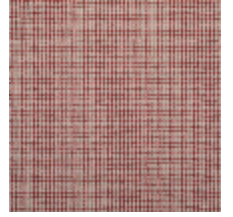
4265-03  
**CAMBREMER -  
ÉBÈNE**



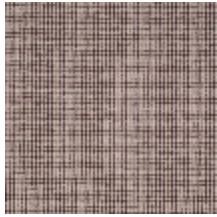
4265-04  
**CAMBREMER -  
OCRE**



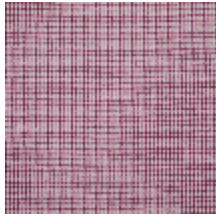
4265-05  
**CAMBREMER -  
TOURNESOL**



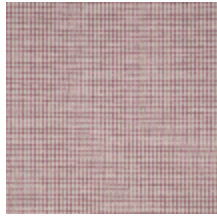
4265-06  
**CAMBREMER -  
CORNALINE**



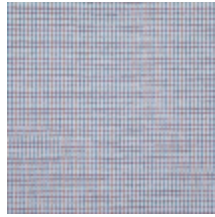
4265-07  
**CAMBREMER -  
BURGUNDY**



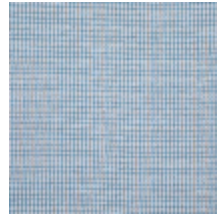
4265-08  
**CAMBREMER -  
GRIOTTE**



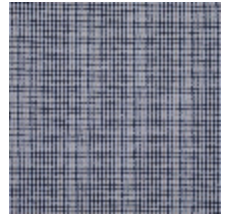
4265-09  
**CAMBREMER -  
PÉTALE**



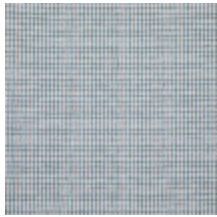
4265-10  
**CAMBREMER -  
PORCELAINE**



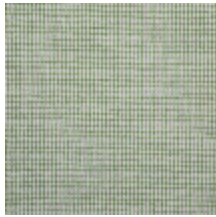
4265-11  
**CAMBREMER -  
CIEL**



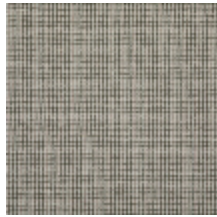
4265-12  
**CAMBREMER -  
ENCRE**



4265-13  
**CAMBREMER -  
AGAVE**



4265-14  
**CAMBREMER -  
PRAIRIE**



4265-15  
**CAMBREMER -  
KAKI**

# LELIEVRE

PARIS

## CAMBREMER - KAKI

4265-15

