

LELIEVRE

PARIS

ORCHESTRA - ONYX

4289-04



A soft, plush chenille tapestry, ORCHESTRA reinterprets a floral archive motif in an explosion of shades and textures. Its arabesques evoke a masked ball of colors, a sensual textile symphony.

Collection	FESTIVITÉS
------------	------------

Brand	QUENIN
-------	--------

TECHNICAL DATA

Type	Jacquard
------	----------

Composition	Viscose 48% - Cotton 28% - Polyester 24%
-------------	--

Width	131 cm
-------	--------

Repeat cut	No
------------	----

Vertical repeat	57 cm
-----------------	-------

Horizontal repeat	33 cm
-------------------	-------

Half drop match	No
-----------------	----

Care	  
------	---

Uses	   
------	---

Martindale test	40 000 T
-----------------	----------

Weight / Linear metre	830 g
-----------------------	-------

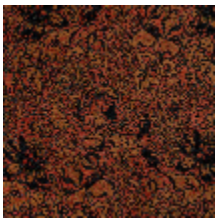
Fire rating	EN1021-1&2
-------------	------------

LELIEVRE

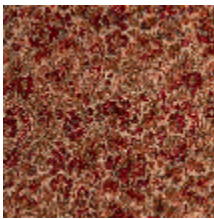
PARIS



Available colours



4289-01
**ORCHESTRA -
CORNALINE**



4289-02
**ORCHESTRA -
BOIS DE ROSE**



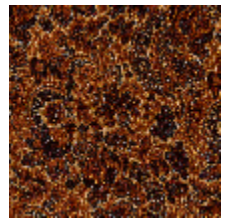
4289-03
**ORCHESTRA -
JADE**



4289-04
**ORCHESTRA -
ONYX**



4289-05
**ORCHESTRA -
BRONZE**



4289-06
**ORCHESTRA -
AMBRE**