

LELIEVRE

PARIS

FILAO-SOLEIL *

0446-01



Timeless... A comprehensive colour range and an excellent rub test are the qualities of this new essential chenille. Two contrasting tones finely mixed to create a horizontal strié in 35 contemporary colourways from classic neutrals to vibrant modern colours, all capable of harmonizing with the current Lelievre fabric collections.

Brand	LELIEVRE PARIS
-------	----------------

TECHNICAL DATA


Type	Semi-plain
------	------------

Composition	Viscose 56% - Cotton 33% - Polyester 8% - Polyamide 3%
-------------	--

Width	140 cm
-------	--------

Repeat cut	No
------------	----

Half drop match	No
-----------------	----

Care	  
------	---

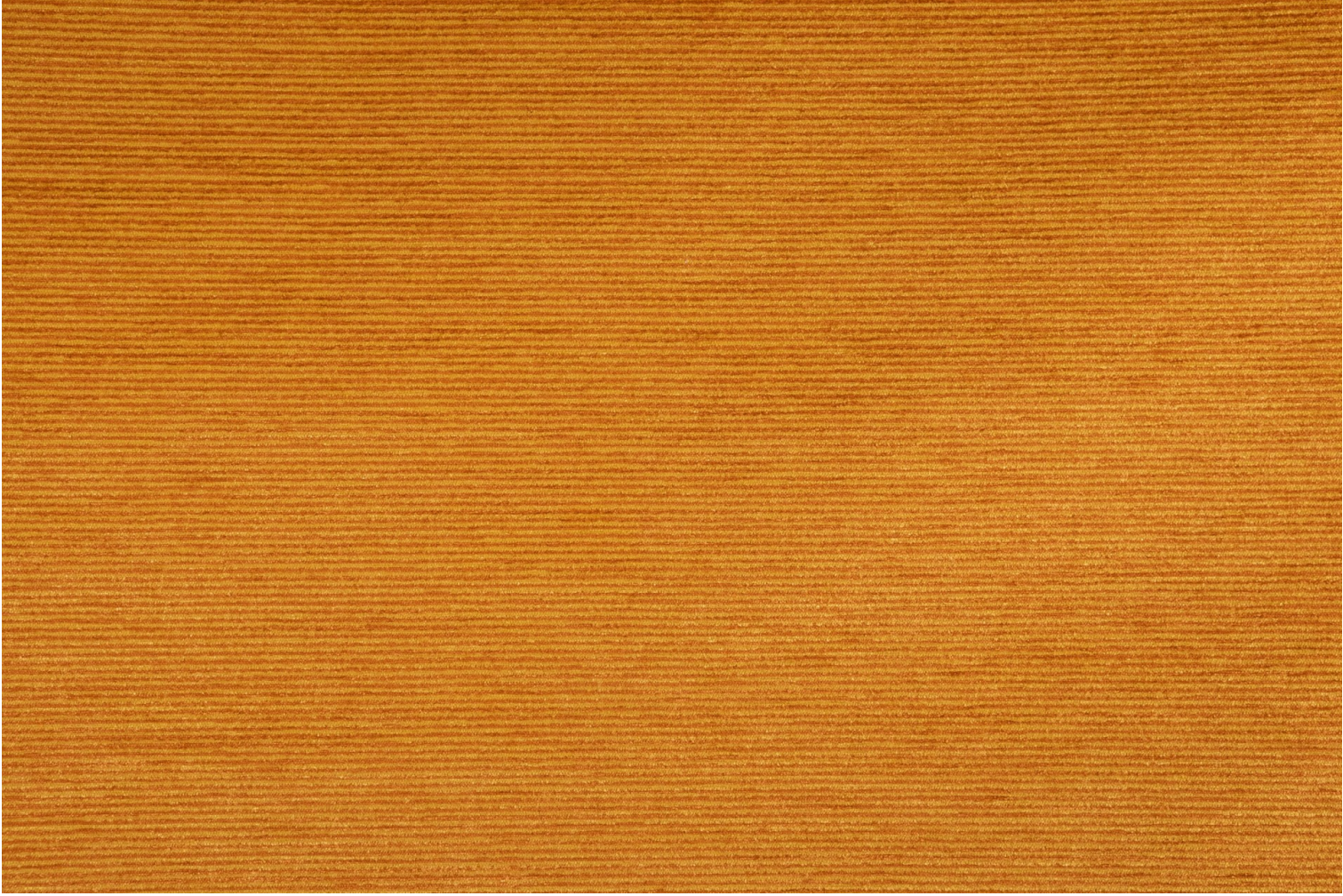
Uses	  
------	---

Martindale test	30 000 T
-----------------	----------

Weight / Linear metre	640 g
-----------------------	-------

LELIEVRE

PARIS



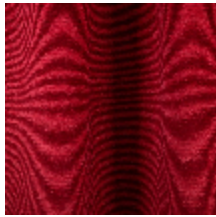
LELIEVRE

PARIS

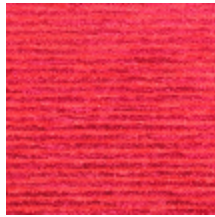
Available colours



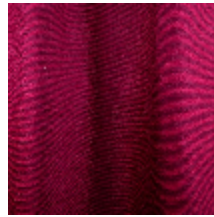
0446-01
FILAO-SOLEIL *



0446-04
FILAO-SANGUINE *



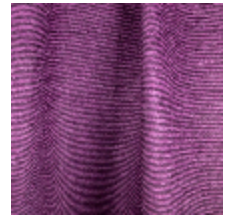
0446-05
FILAO-ECARLATE *



0446-07
FILAO-PIVOINE *



0446-08
FILAO-TYRIEN *



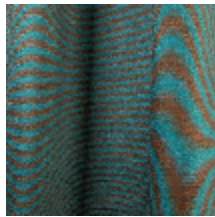
0446-09
FILAO-LILAS *



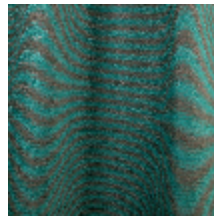
0446-11
FILAO-NUIT *



0446-13
FILAO-FLOT *



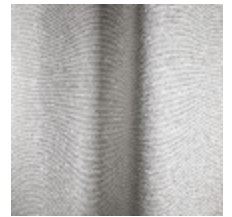
0446-14
FILAO-CHARDON *



0446-15
FILAO-VERONESE *



0446-16
FILAO-NUAGE *



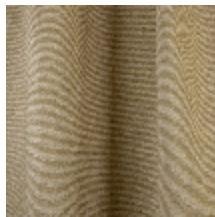
0446-17
FILAO-PLATINE *



0446-18
FILAO-IVOIRE *



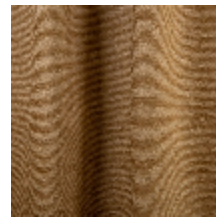
0446-20
FILAO-ARGILE *



0446-21
FILAO-LICHEN *



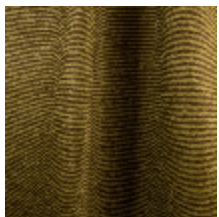
0446-22
FILAO-RESEDA *



0446-23
FILAO-DAIM *



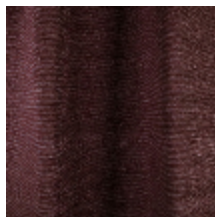
0446-24
FILAO-OR *



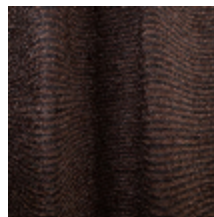
0446-27
FILAO-MOUSSE *



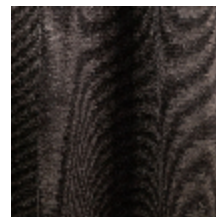
0446-28
FILAO-ROUX *



0446-29
FILAO-CRAMOISI *



0446-30
FILAO-CHATAIGNE *



0446-32
FILAO-POIVRE *



0446-33
FILAO-TAUPE *



0446-34
FILAO-RAMIER *



0446-35
FILAO-CENDRE *