

LELIEVRE

PARIS

FILAO-ROUX *

0446-28



Timeless... A comprehensive colour range and an excellent rub test are the qualities of this new essential chenille. Two contrasting tones finely mixed to create a horizontal strié in 35 contemporary colourways from classic neutrals to vibrant modern colours, all capable of harmonizing with the current Lelievre fabric collections.

Brand	LELIEVRE
-------	----------

TECHNICAL DATA

Composition	Viscose 56% - Cotton 33% - Polyester 8% - Polyamide 3%
-------------	--

Width	140 cm
-------	--------

Repeat cut	No
------------	----

Drop match	No
------------	----

Care	   
------	---

Uses	  
------	---

Martindale test	30 000 T
-----------------	----------

Weight / Linear metre	640 g
-----------------------	-------

LELIEVRE

PARIS



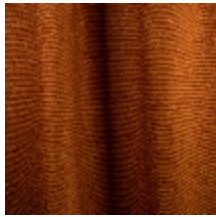
LELIEVRE

PARIS

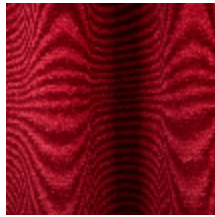
Available colours



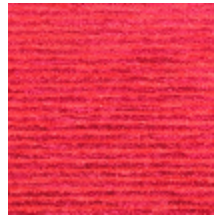
0446-01
FILAO-SOLEIL *



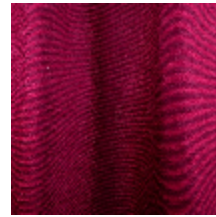
0446-03
FILAO-AMBRE *



0446-04
FILAO-SANGUINE *



0446-05
FILAO-ECARLATE *



0446-07
FILAO-PIVOINE *



0446-08
FILAO-TYRIEN *



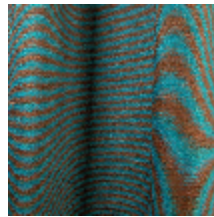
0446-09
FILAO-LILAS *



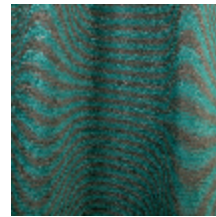
0446-11
FILAO-NUIT *



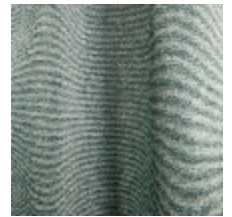
0446-13
FILAO-FLOT *



0446-14
FILAO-CHARDON *



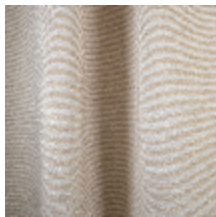
0446-15
FILAO-VERONESE *



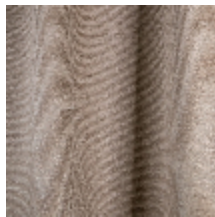
0446-16
FILAO-NUAGE *



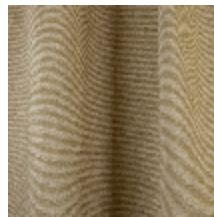
0446-17
FILAO-PLATINE *



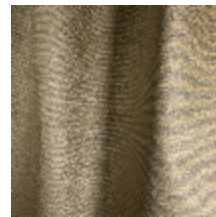
0446-18
FILAO-IVOIRE *



0446-20
FILAO-ARGILE *



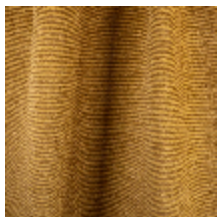
0446-21
FILAO-LICHEN *



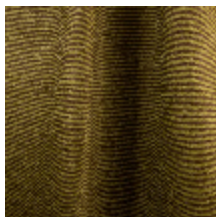
0446-22
FILAO-RESEDA *



0446-23
FILAO-DAIM *



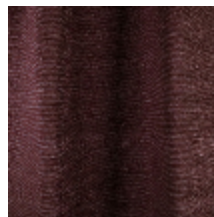
0446-24
FILAO-OR *



0446-27
FILAO-MOUSSE *



0446-28
FILAO-ROUX *



0446-29
FILAO-CRAMOISI *



0446-30
FILAO-CHATAIGNE *



0446-32
FILAO-POIVRE *



0446-33
FILAO-TAUPE *



0446-34
FILAO-RAMIER *



0446-35
FILAO-CENDRE *



0446-19
FILAO-SABLE *