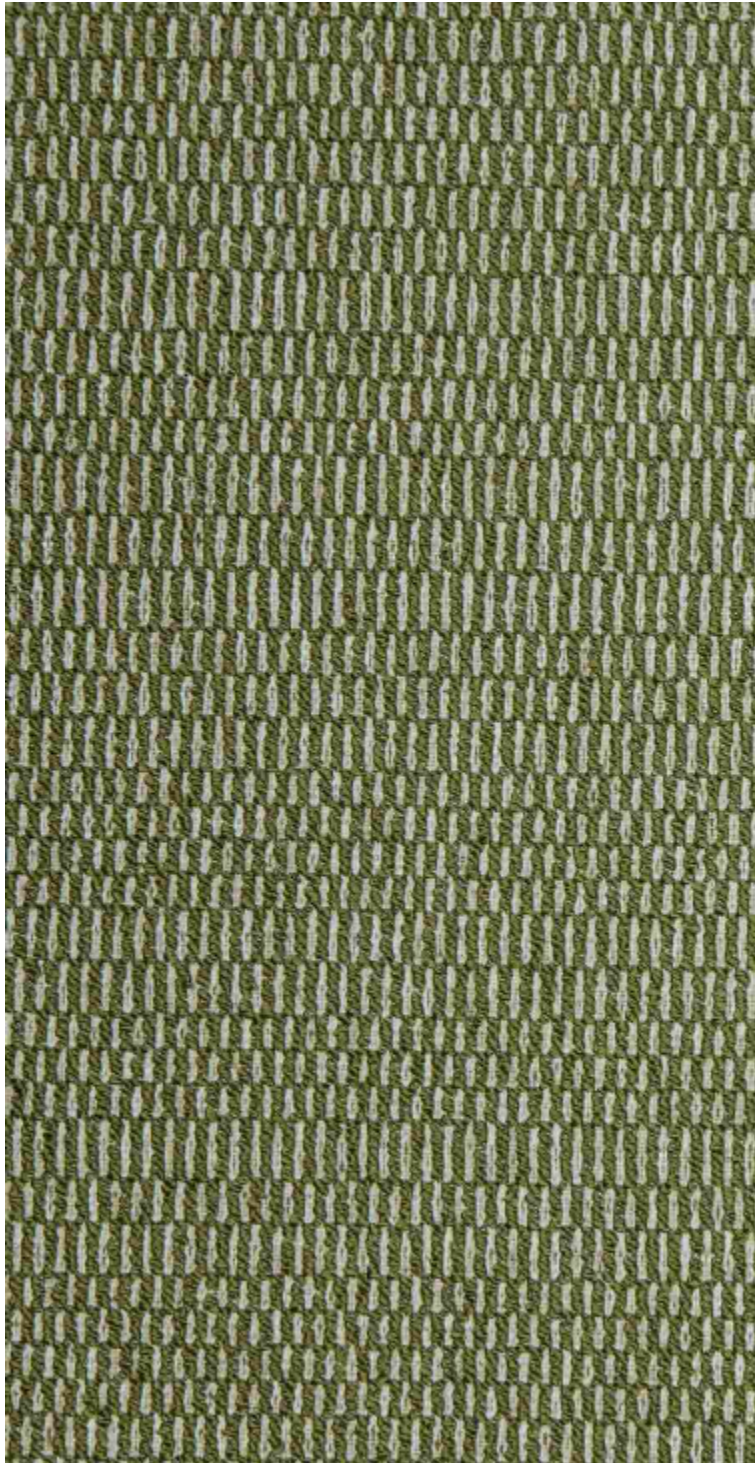


**ANTIGUA - KAKI**

5056-07



Bold and graphic, ANTIGUA stands out with its textured relief and geometric motifs inspired by Caribbean crafts. Thick threads trace sculpted lines, expressing the raw strength of natural materials.

Collection	ILES DU VENT
------------	--------------

Brand	LELIÈVRE PARIS OUTDOOR
-------	------------------------

## TECHNICAL DATA

Type	Outdoor
------	---------

Composition	Polypropylene 100%
-------------	--------------------

Width	133 cm
-------	--------

Repeat cut	No
------------	----

Vertical repeat	36 cm
-----------------	-------

Horizontal repeat	1 cm
-------------------	------

Half drop match	No
-----------------	----

Care	  
------	---

Uses	  
------	---

Martindale test	40 000 T
-----------------	----------

Weight / Linear metre	1 154 g
-----------------------	---------

Fire rating	EN1021-1&2
-------------	------------

LELIEVRE

PARIS



# LELIEVRE

PARIS

## Available colours



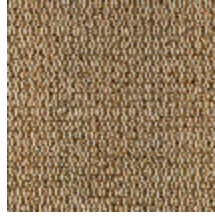
5056-01  
**ANTIGUA -  
NATUREL**



5056-02  
**ANTIGUA -  
FICELLE**



5056-03  
**ANTIGUA - NOIR**



5056-04  
**ANTIGUA -  
BRONZE**



5056-05  
**ANTIGUA -  
TOMETTE**



5056-06  
**ANTIGUA - SOLEIL**



5056-07  
**ANTIGUA - KAKI**



5056-08  
**ANTIGUA - AZUR**



5056-09  
**ANTIGUA -  
OCEAN**

# LELIEVRE

PARIS

## ANTIGUA - KAKI

5056-07

