

**MONTERRAT - OCRE**

5058-02



A companion to ORCHILA, MONTERRAT features wide bayadère stripes with artisanal refinement. Its raised weave catches the light, recalling colorful fabrics drying in the tropical breeze.

---

Collection ILES DU VENT

---

Brand LELIÈVRE PARIS OUTDOOR

---

## TECHNICAL DATA

---

Type Outdoor

---

Composition 100% Polypropylene

---

Width 143 cm

---

Repeat cut No

---

Vertical repeat 12 cm

---

Horizontal repeat 2 cm


---

Half drop match No

---

Care    

---

Uses    

---

Martindale test 40 000 T

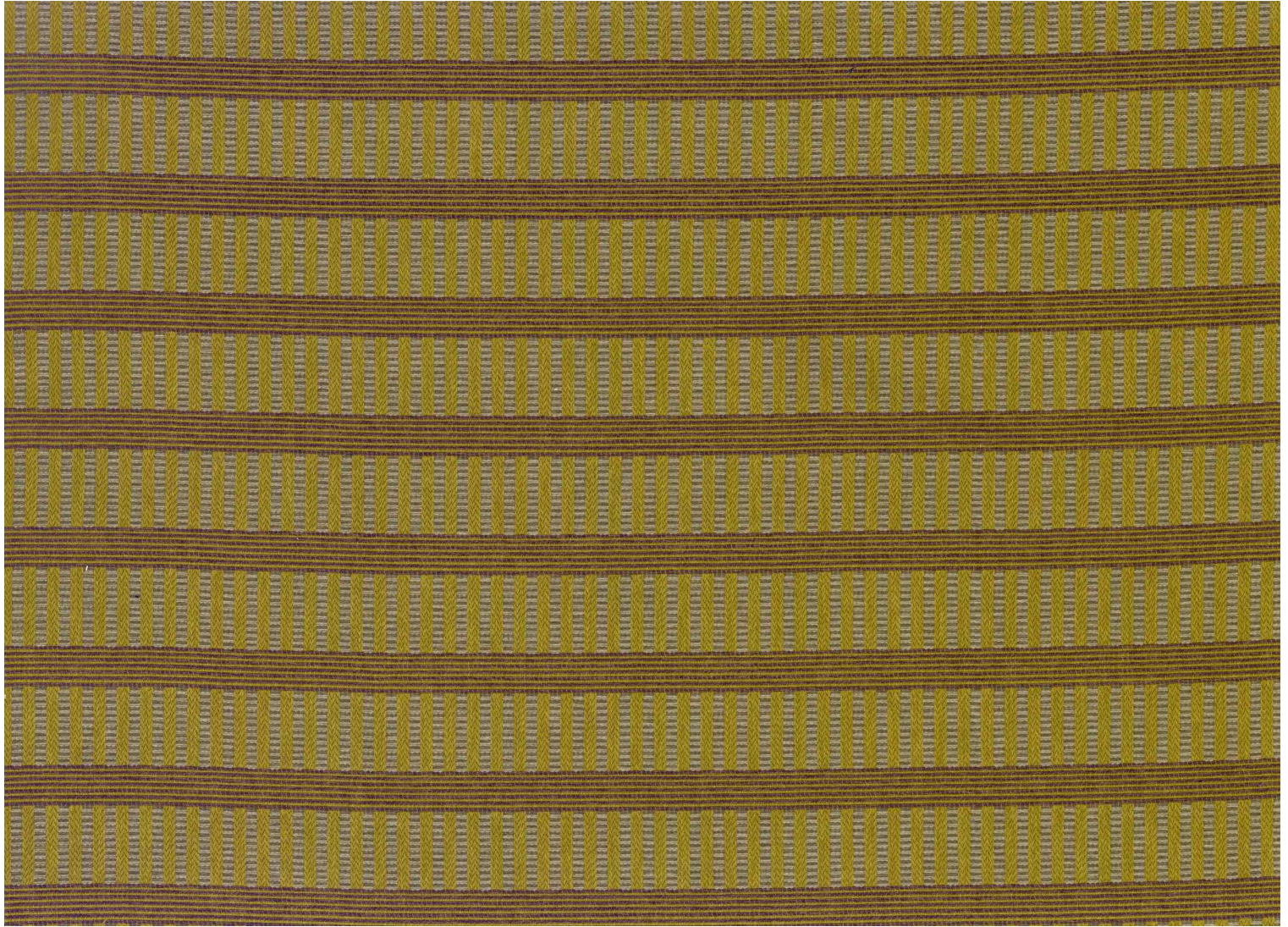
---

Weight / Linear metre 880 g

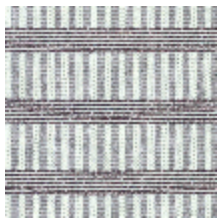
---

# LELIEVRE

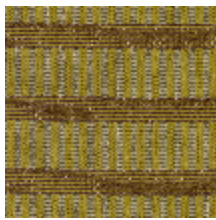
PARIS



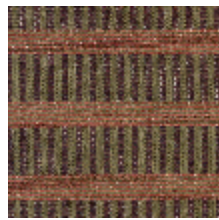
## Available colours



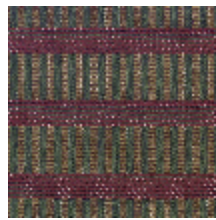
5058-01  
**MONTERRAT -  
NATUREL**



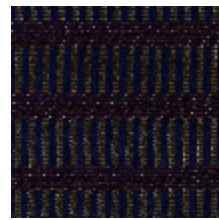
5058-02  
**MONTERRAT -  
OCRE**



5058-03  
**MONTERRAT -  
TOMETTE**



5058-04  
**MONTERRAT -  
KAKI**



5058-05  
**MONTERRAT -  
ENCRE**

**MONTSERRAT - OCRE**

5058-02

