

LELIEVRE

PARIS

AMARRE - DORE

5067-03



Inspired by ropework and maritime knots, AMARRÉ combines linen yarns and subtle floats to sculpt a natural relief. A durable, tactile textile recalling handcrafted rope braids from distant ports. Woven in the Lelièvre mill.

Collection	ESCALES LOINTAINES
------------	--------------------

Brand	LELIEVRE PARIS
-------	----------------

TECHNICAL DATA

Type	Jacquard
------	----------

Composition	50% Polyamide 25% Linen 25% Cotton
-------------	------------------------------------

Width	143 cm
-------	--------

Repeat cut	No
------------	----

Vertical repeat	5 cm
-----------------	------

Horizontal repeat	2 cm
-------------------	------

Half drop match	No
-----------------	----

Care	   
------	---

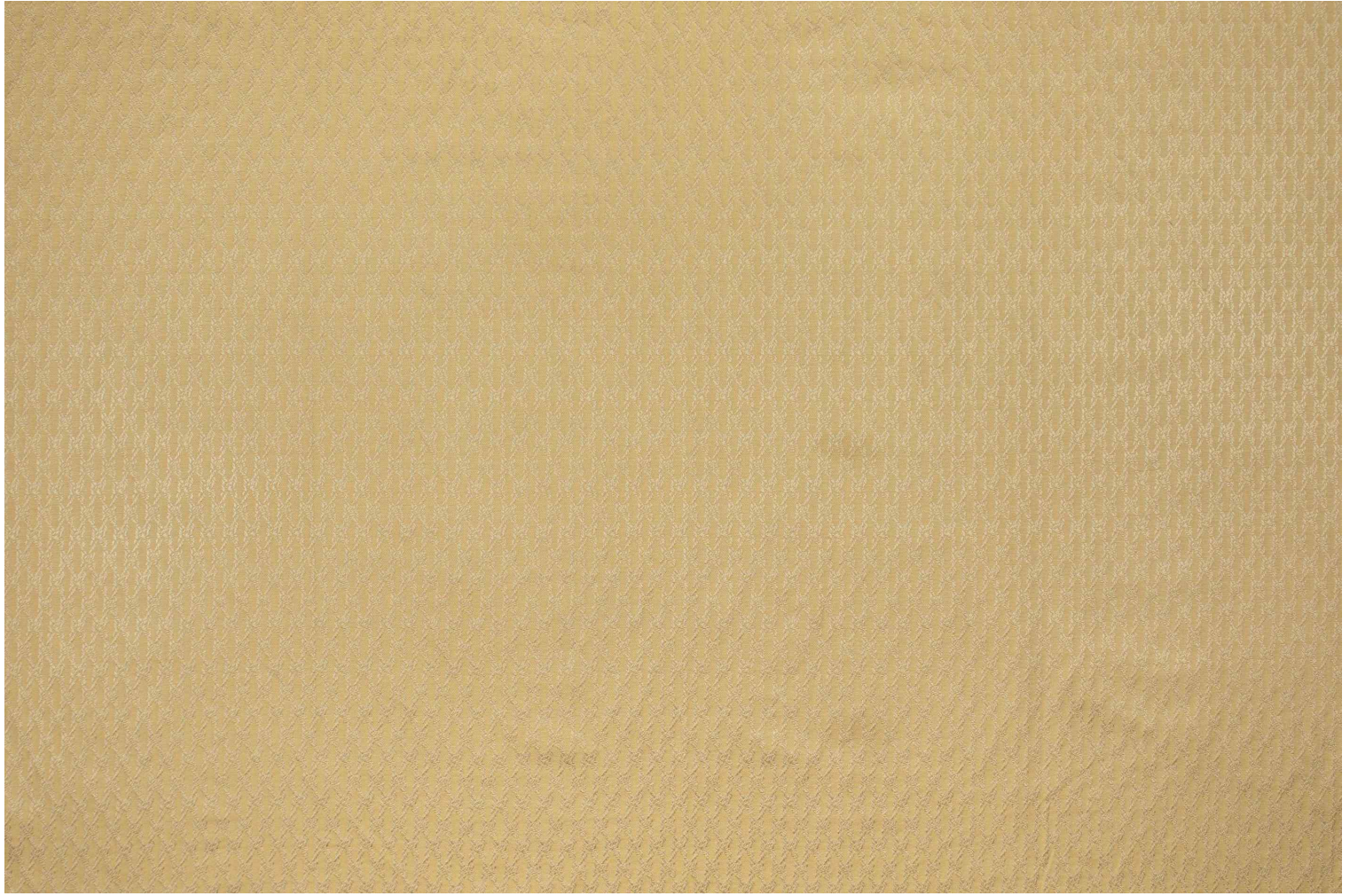
Uses	   
------	---

Martindale test	40 000 T
-----------------	----------

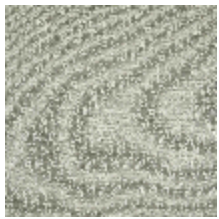
Weight / Linear metre	370 g
-----------------------	-------

LELIEVRE

PARIS



Available colours



5067-01
AMARRE - ARGILE



5067-02
**AMARRE -
NATUREL**



5067-03
AMARRE - DORE



5067-04
**AMARRE -
BRONZE**

AMARRE - DORE

5067-03

