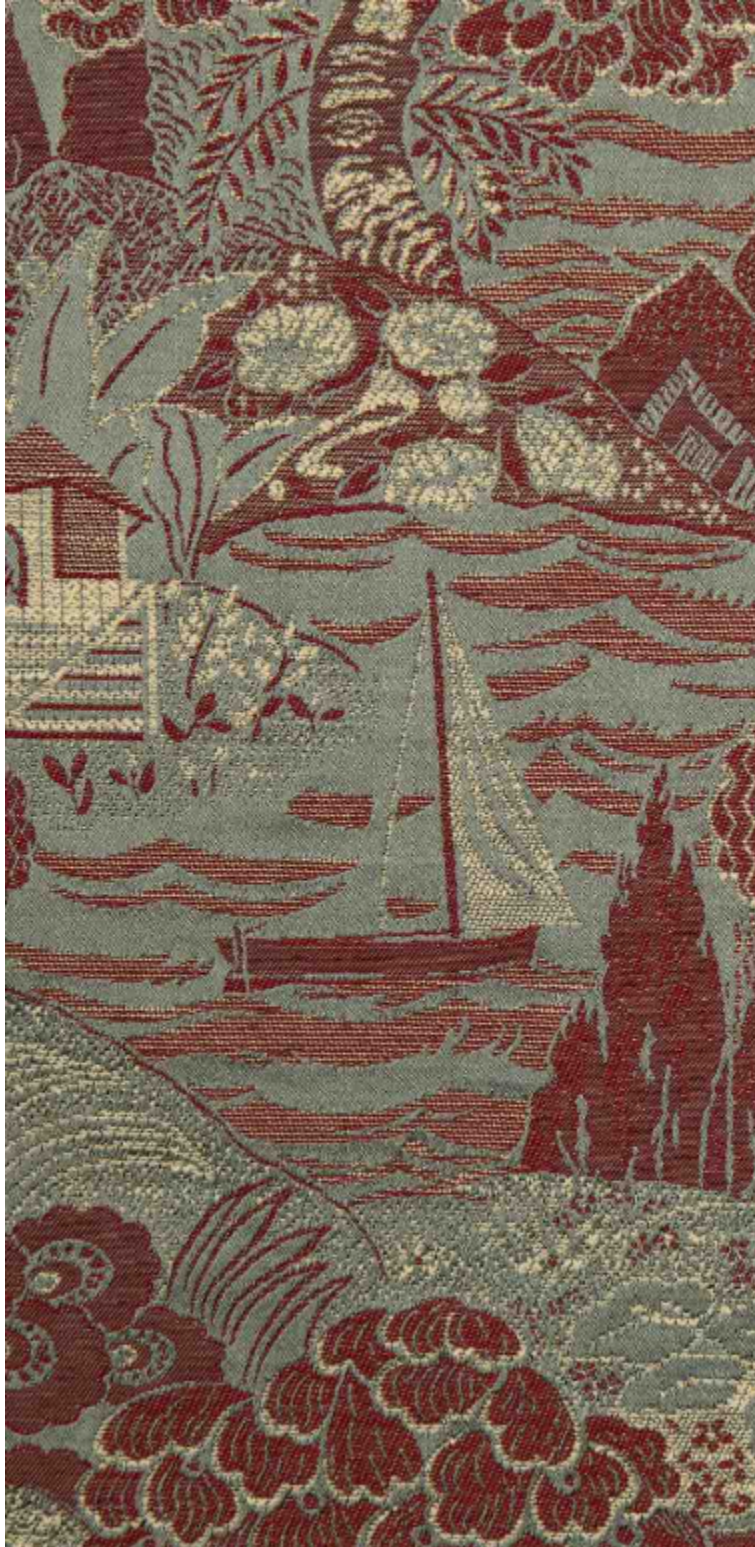


LA TRAVERSEE - CELADON

5068-03



Derived from a heritage artwork in the archives, LA TRAVERSÉE features a stylized landscape of lush hills and islets. Woven on jacquard looms in the Lelièvre mill, it offers a rich hand and a multidimensional woven pattern that sets the narrative tone of the collection.

Collection ESCALES LOINTAINES

Brand LELIÈVRE PARIS

TECHNICAL DATA

Type Jacquard

Composition 43% Polyamide 34% Cotton
19% Polyester 4% Linen

Width 139 cm


Repeat cut Yes

Vertical repeat 44 cm

Horizontal repeat 35 cm

Half drop match No

Care    

Uses    

Martindale test 50 000 T

Weight / Linear metre 500 g

Fire rating EN1021-1&2

LELIEVRE

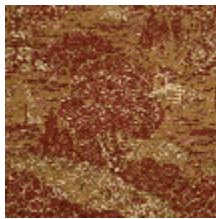
PARIS



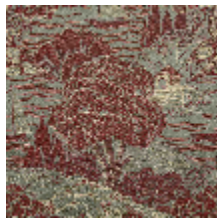
Available colours



5068-01
**LA TRAVERSEE -
DORE**



5068-02
**LA TRAVERSEE -
CUIVRE**



5068-03
**LA TRAVERSEE -
CELADON**

LA TRAVERSEE - CELADON

5068-03

