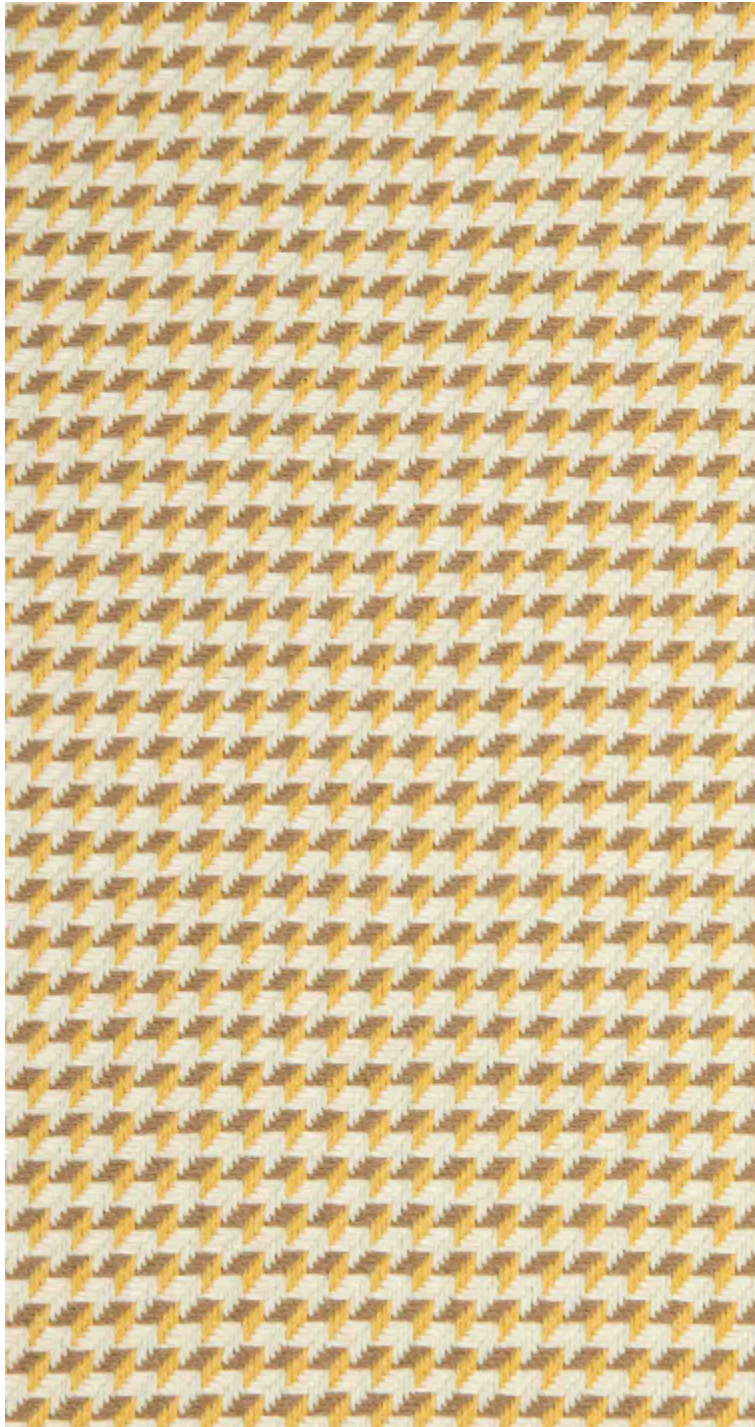


# LELIEVRE

PARIS

## CANNAGE - DORE

5078-02



A contemporary interpretation of cane weaving. The geometric pattern plays with transparency, sheen and structure for a smart and architectural look.

Collection **ESCALES LOINTANES**

Brand **LELIEVRE PARIS**

### TECHNICAL DATA

Type **Jacquard**

Composition **60%Cotton - 20%Polyester - 16%Polietilenic - 4%Other fibres**

Width **144 cm**

Repeat cut **No**

Vertical repeat **1 cm**

Horizontal repeat **1 cm**

Half drop match **No**

Care    

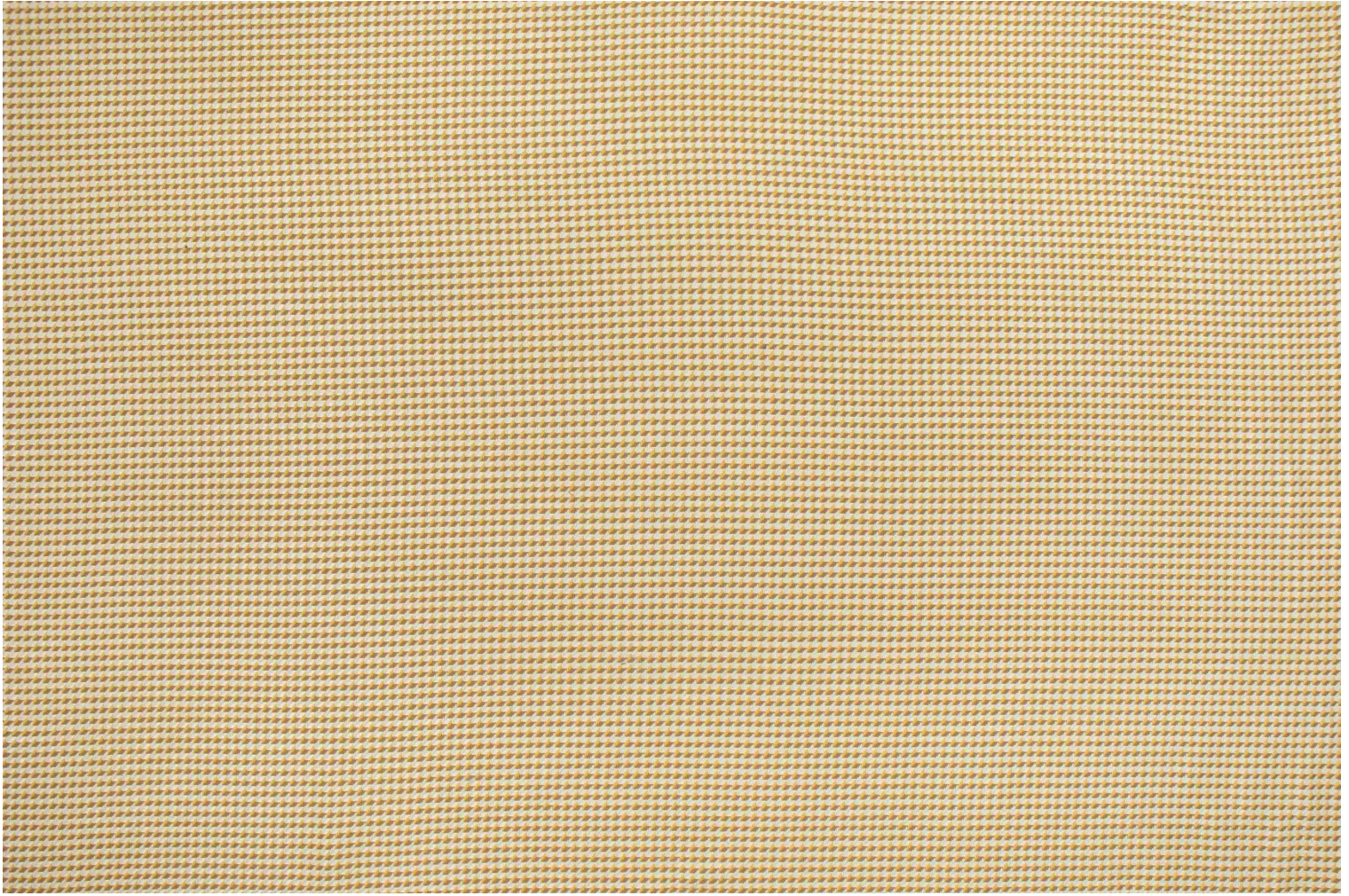
Uses   

Martindale test **100 000 T**

Weight / Linear metre **860 g**

# LELIEVRE

PARIS



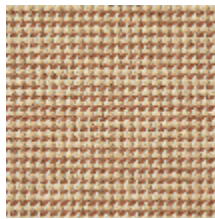
## Available colours



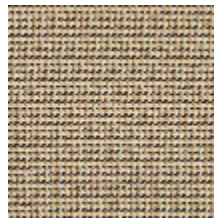
5078-01  
**CANNAGE -  
BEIGE**



5078-02  
**CANNAGE - DORE**



5078-03  
**CANNAGE -  
TERRACOTTA**



5078-04  
**CANNAGE -  
POIVRE**



5078-05  
**CANNAGE -  
AGAVE**

**CANNAGE - DORE**

5078-02

# LELIEVRE

PARIS

LELIEVRE

PARIS

