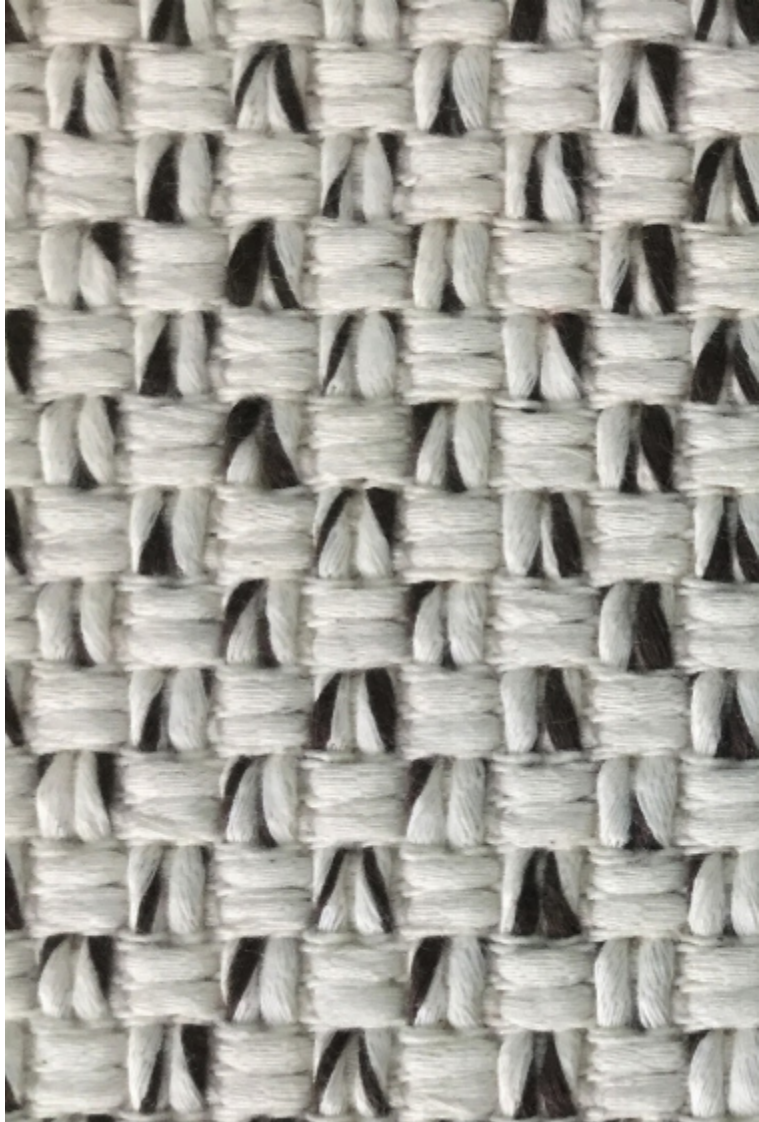


LELIEVRE

PARIS

SEED - SOJA

0509-01



A weave with a vibrant contrasting knit effect. This regular weave has a fantastic texture and the colours are attuned to the other fabrics in the collection. Soothing and relaxing for seating.

Collection	SIGNATURES
------------	------------

Brand	LELIEVRE PARIS
-------	----------------


TECHNICAL DATA

Composition	Cotton 96% - Acrylic 4%
-------------	-------------------------

Width	140 cm
-------	--------

Repeat cut	No
------------	----

Drop match	No
------------	----

Care	  
------	---

Uses	  
------	---

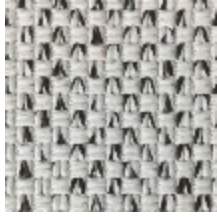
Martindale test	20 000 T
-----------------	----------

Weight / Linear metre	940 g
-----------------------	-------

LELIEVRE

PARIS

Available colours



0509-01
SEED - SOJA



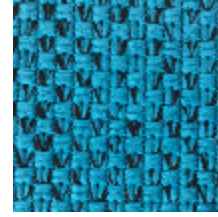
0509-02
SEED - DAIM



0509-03
SEED - TAUPE *



0509-05
SEED - ECARLATE
*



0509-06
SEED -
TURQUOISE *

SEED - SOJA

0509-01

