

LELIEVRE

PARIS

CARACALLA - GYPSE

0550-01



A study in weaving results in a precious faux-uni. Irregular geometric shapes are assembled like a game between matt and shine textures. Like a mosaic, the colors shine behind metallic reflections giving a delicate shimmer. Woven in natural material strengthened by polyamide, it provides strength for upholstery and retains flexibility when stretched or draped as curtains.

Collection	LIGNE D'HORIZON
------------	-----------------

Brand	LELIEVRE
-------	----------

TECHNICAL DATA

Composition	Viscose 88% - Polyamide 12%
-------------	-----------------------------

Width	138 cm
-------	--------

Repeat cut	No
------------	----

Drop match	No
------------	----

Care	   
------	---

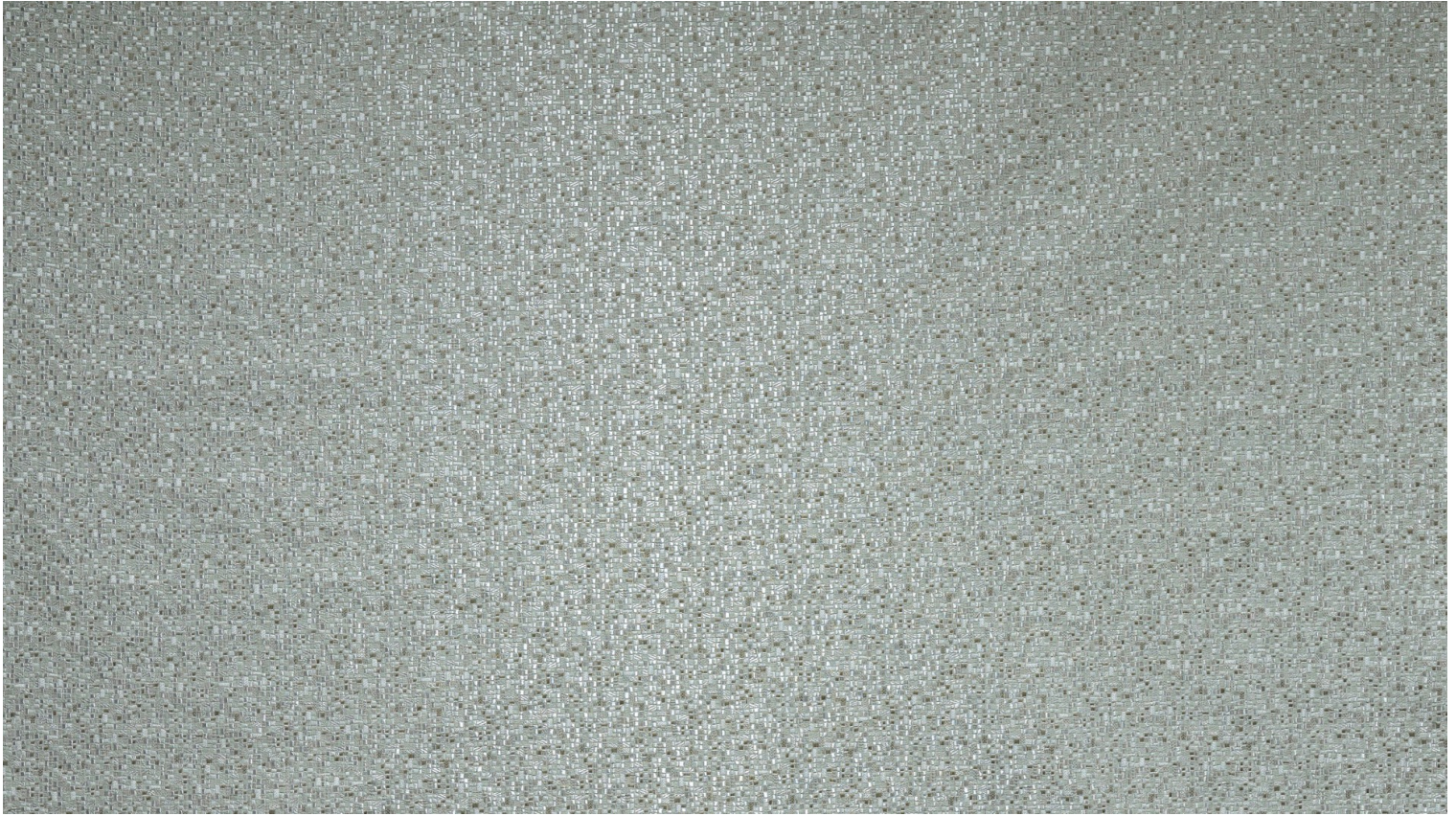
Uses	   
------	---

Martindale test	40 000 T
-----------------	----------

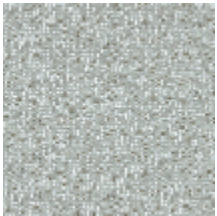
Weight / Linear metre	400 g
-----------------------	-------

LELIEVRE

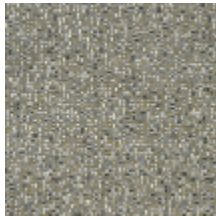
PARIS



Available colours



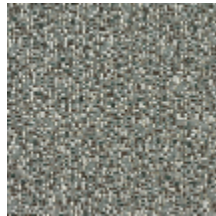
0550-01
**CARACALLA -
GYPSE**



0550-02
**CARACALLA -
PYRITE**



0550-03
**CARACALLA -
PLATINE**



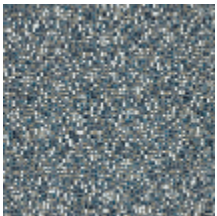
0550-04
**CARACALLA -
JADE**



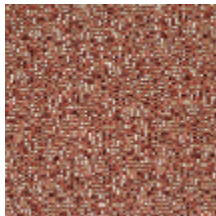
0550-05
**CARACALLA -
POIVRE**



0550-06
**CARACALLA -
PEPITE**



0550-07
**CARACALLA -
FAIENCE**



0550-08
**CARACALLA -
LAQUE**

CARACALLA - GYPSE

0550-01

