

# LELIEVRE

PARIS

## NAMI - OPALINE \*

0555-04



Nami is the Japanese word for wave and their rolling movement is captured in the relief surface design of this beautiful supple brocatelle. A rich structure brings a delicate subtle light to this contemporary silk. The satin areas of the fabric accentuate the foaming waves in the design.

Collection L'ART ET LA MATIERE

Brand LELIÈVRE PARIS

### TECHNICAL DATA

Type Damasks & Lampas

Composition Linen 42% - Viscose 21% -  
Cotton 19% - Silk 18%

Width 140 cm

Repeat cut No

Vertical repeat 29 cm

Horizontal repeat 68 cm

Half drop match No

Care   

Uses    

Weight / Linear metre 366 g

# LELIEVRE

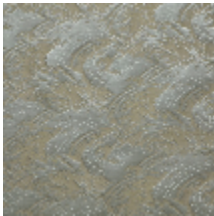
PARIS



## Available colours



0555-01  
**NAMI - ECUME \***



0555-02  
**NAMI - PLATINE \***



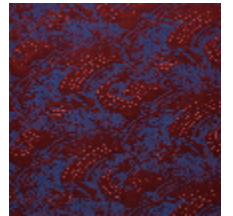
0555-03  
**NAMI - VERMEIL \***



0555-04  
**NAMI - OPALINE \***



0555-05  
**NAMI - ETAIN \***



0555-06  
**NAMI - LAQUE \***

**NAMI - OPALINE \***

0555-04

