

KAYAPO - ANTIQUE

0561-01



The marriage of folklore has become an aesthetic classic... The structure of the design is inspired by the geometric plans of formal gardens while the embroidery comes from the ethnic Kayapo tribes, native to the Amazon forest. Three brilliant colorways for curtains full of character and graphic accessories.

Collection	EVASIONS
------------	----------

Brand	LELIEVRE
-------	----------

TECHNICAL DATA

Composition	Cotton 51% - Viscose 38% - Polyester 11%
-------------	---

Width	131 cm
-------	--------

Repeat cut	No
------------	----

Vertical repeat	77 cm
-----------------	-------

Horizontal repeat	65 cm
-------------------	-------

Drop match	No
------------	----

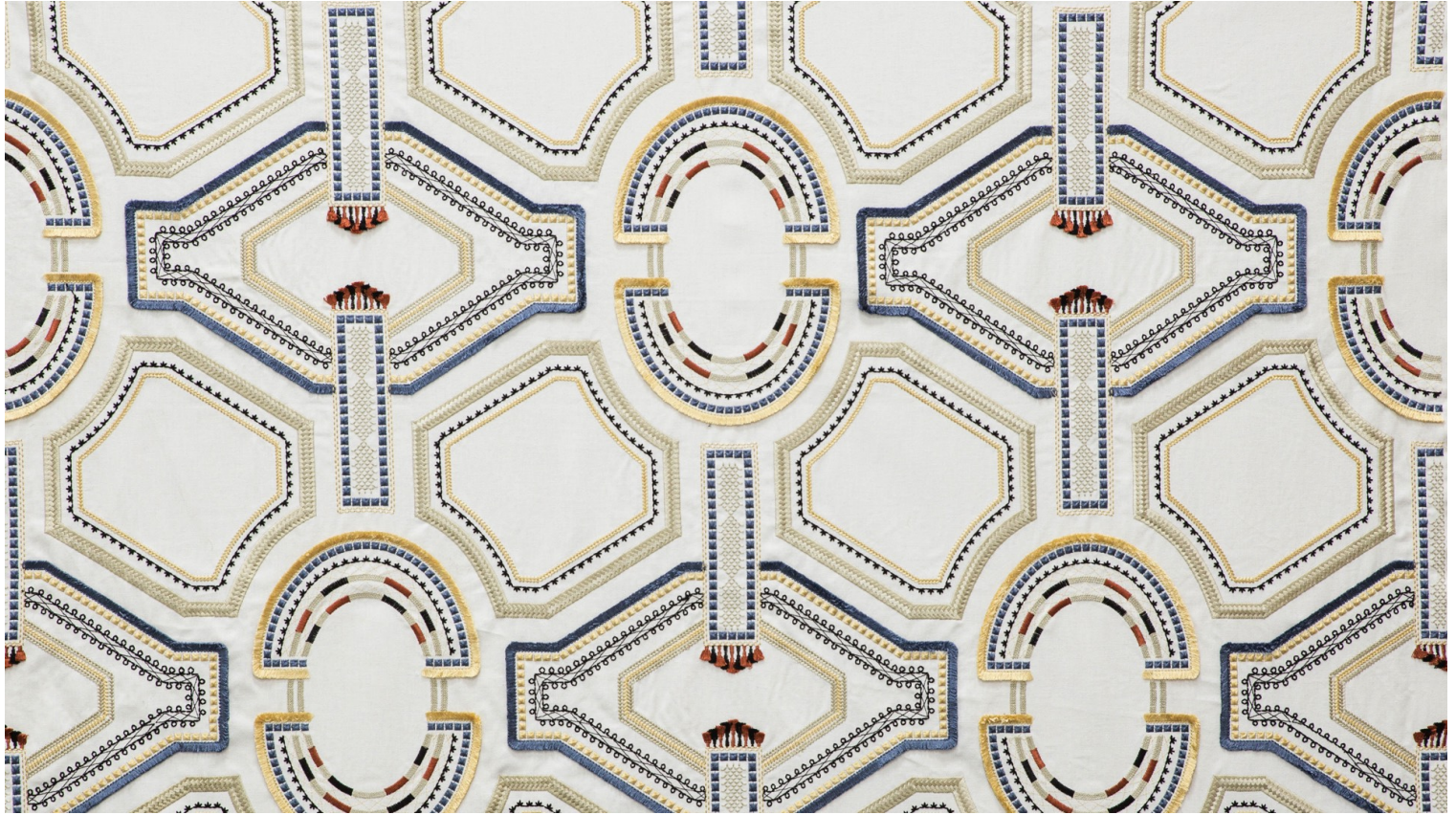
Care	   
------	---

Uses	  
------	---

Weight / Linear metre	535 g
-----------------------	-------

LELIEVRE

PARIS



Available colours



0561-01
**KAYAPO -
ANTIQUE**



0561-02
**KAYAPO -
SORBET ***



0561-03
**KAYAPO -
PERROQUET ***

KAYAPO - ANTIQUE

0561-01

