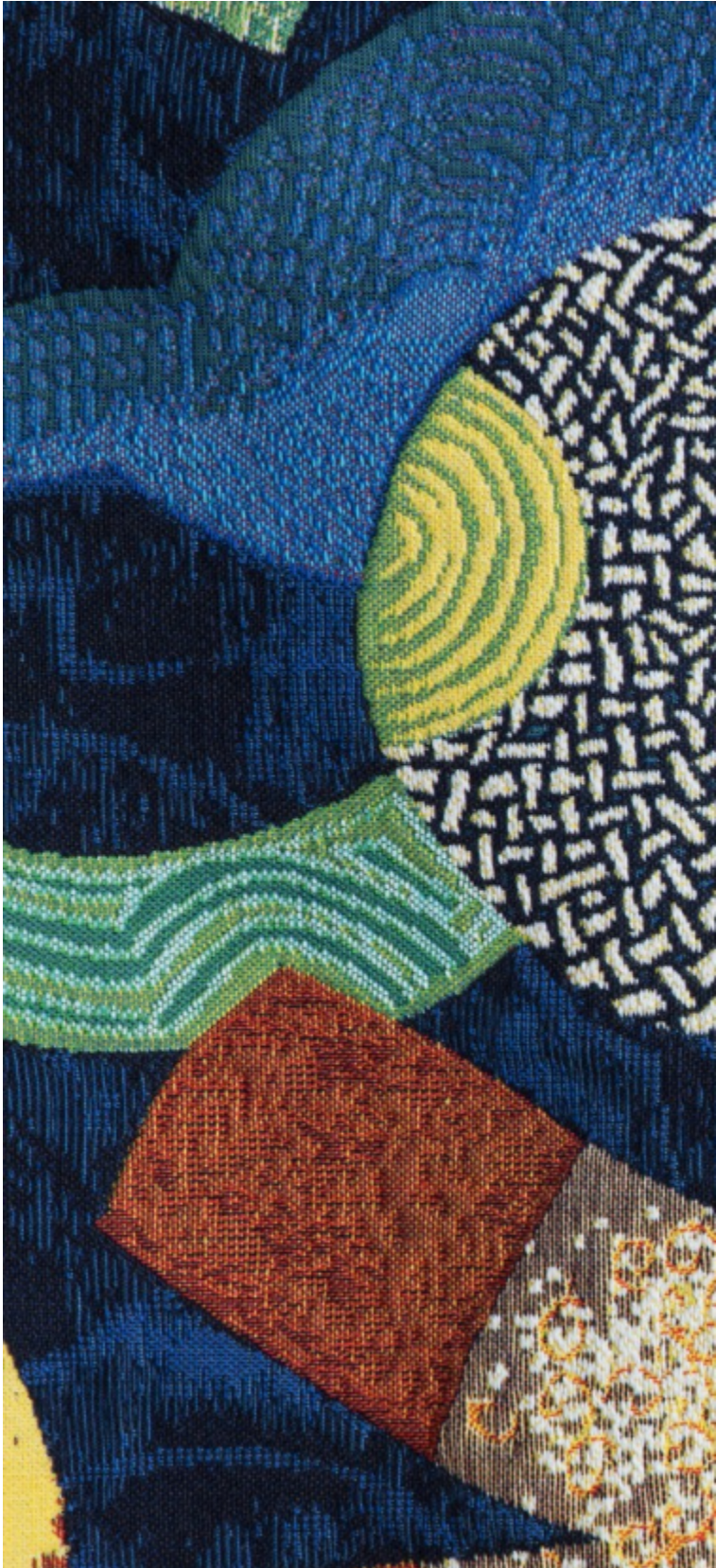


TROPICAL - JUNGLE

0567-01

LELIEVRE

PARIS



Tropical is the iconic design for the season. This naive drawing specially created for the collection is expressed in the tapestry weaving technique. The deep harmonious blue of the background, like the bottom of the ocean, emphasises and brings out the colors and design of each motif like decoupage. At the heart of this profuse jungle-like reef are abstract motifs in the primary colors associated with ceramics of the 1950s. We also see vintage notes and tributes to the new designs of the artists of the 1960s.

Collection	EVASIONS
------------	----------

Brand	LELIEVRE
-------	----------

TECHNICAL DATA

Composition	Cotton 74% Acrylic 17% Polyamide 3% Viscose 3% Polyester 3%
-------------	---

Width	138 cm
-------	--------

Repeat cut	No
------------	----

Vertical repeat	106 cm
-----------------	--------

Horizontal repeat	138 cm
-------------------	--------

Drop match	No
------------	----

Care	   
------	---

Uses	 
------	---

Martindale test	30 000 T
-----------------	----------

Weight / Linear metre	1 450 g
-----------------------	---------

LELIEVRE

PARIS



lelievreparis.com
contact@lelievreparis.com

TROPICAL - JUNGLE

0567-01

