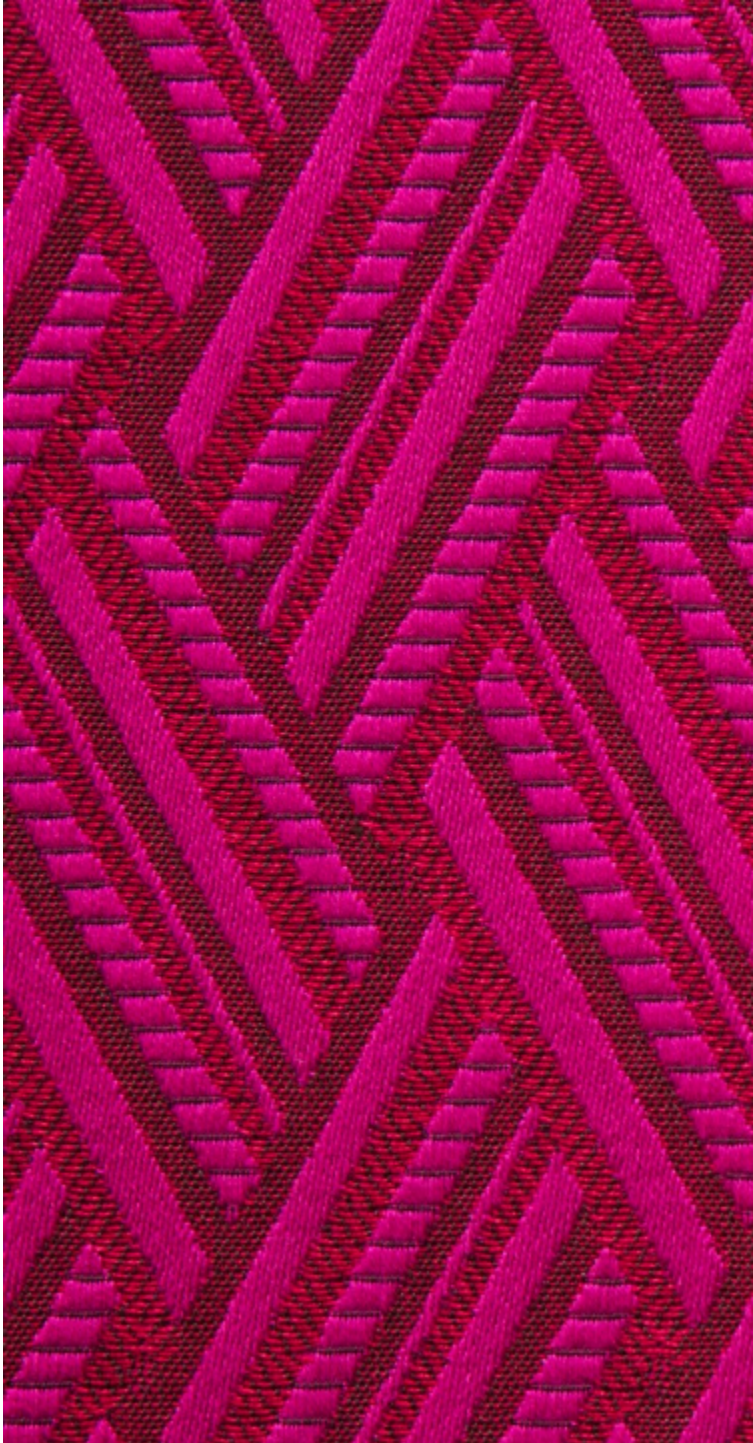


# LELIEVRE

PARIS

## VACOA - FUCHSIA

0568-10



A look inspired by the Réunion Island, the local architecture, the entangled leaves of the Vacoa shrub are sublimated by the art of basketwork. A ribbon motif in relief has a 3D effect. The surface is enlivened by 11 vivid tints, bold or neutral. The feel is soft, matt and the fabric can be used for upholstery, accessories, curtains and wall coverings with infinite possibilities.

---

Collection	EVASIONS
------------	----------

---

Brand	LELIEVRE
-------	----------

---

### TECHNICAL DATA

---

Composition	Viscose 98% - Polyamide 2%
-------------	----------------------------

---

Width	140 cm
-------	--------

---

Repeat cut	No
------------	----

---

Vertical repeat	8 cm
-----------------	------

---

Horizontal repeat	4 cm
-------------------	------


---

Drop match	No
------------	----

---

Care	   
------	---

---

Uses	   
------	---

---

Martindale test	35 000 T
-----------------	----------

---

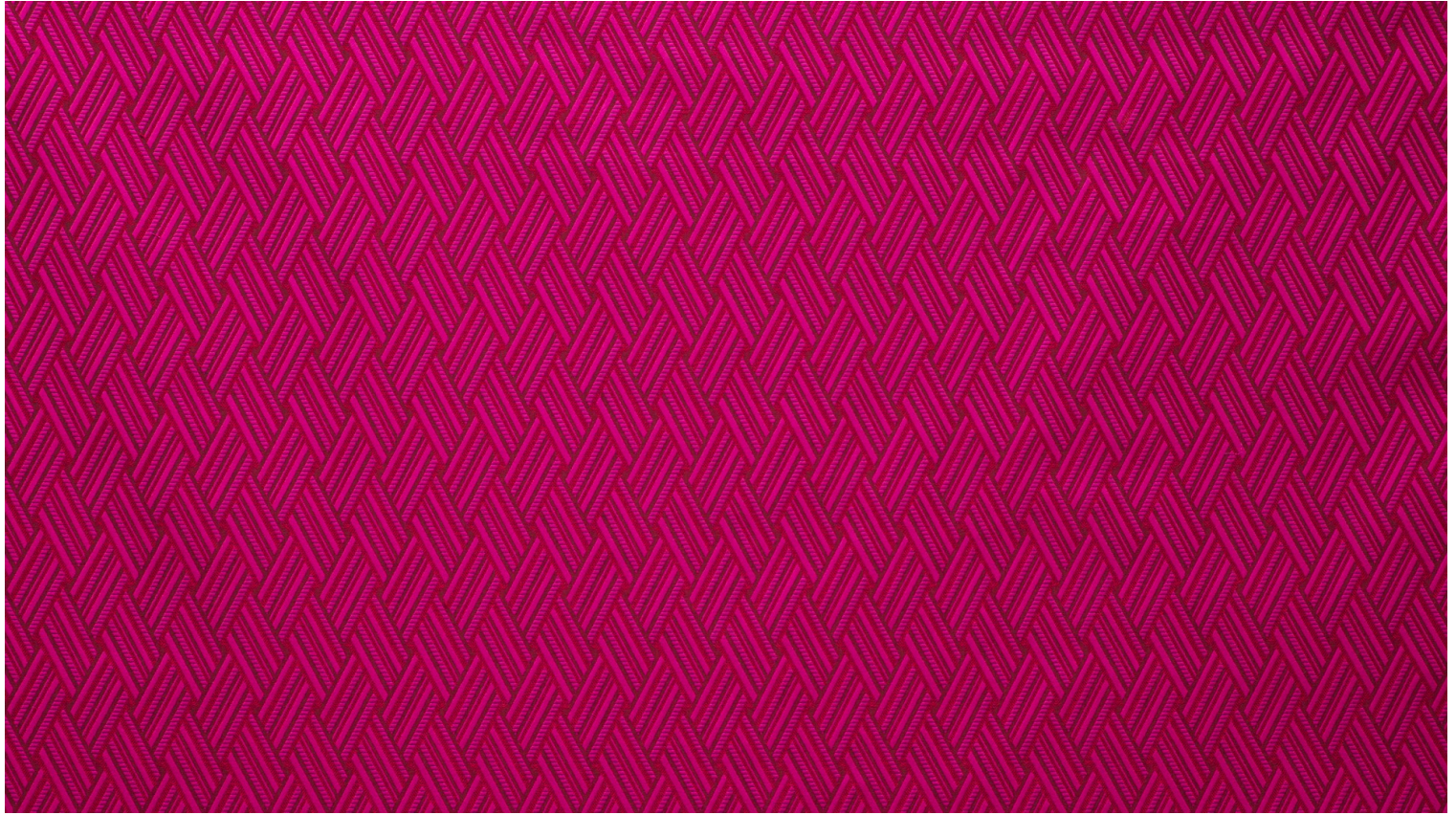
Weight / Linear metre	720 g
-----------------------	-------

---



# LELIEVRE

PARIS



## Available colours



0568-01  
**VACOA - LAGON**



0568-02  
**VACOA -  
NAUTIQUE**



0568-03  
**VACOA -  
CANARD**



0568-04  
**VACOA - FUSAIN**



0568-05  
**VACOA - BRUME**



0568-06  
**VACOA -  
NATUREL**



0568-07  
**VACOA - BRONZE**



0568-08  
**VACOA - SOLEIL**



0568-09  
**VACOA -  
TOMETTE**



0568-10  
**VACOA -  
FUCHSIA**



0568-11  
**VACOA -  
ABRICOT**



**VACOA - FUCHSIA**

0568-10

