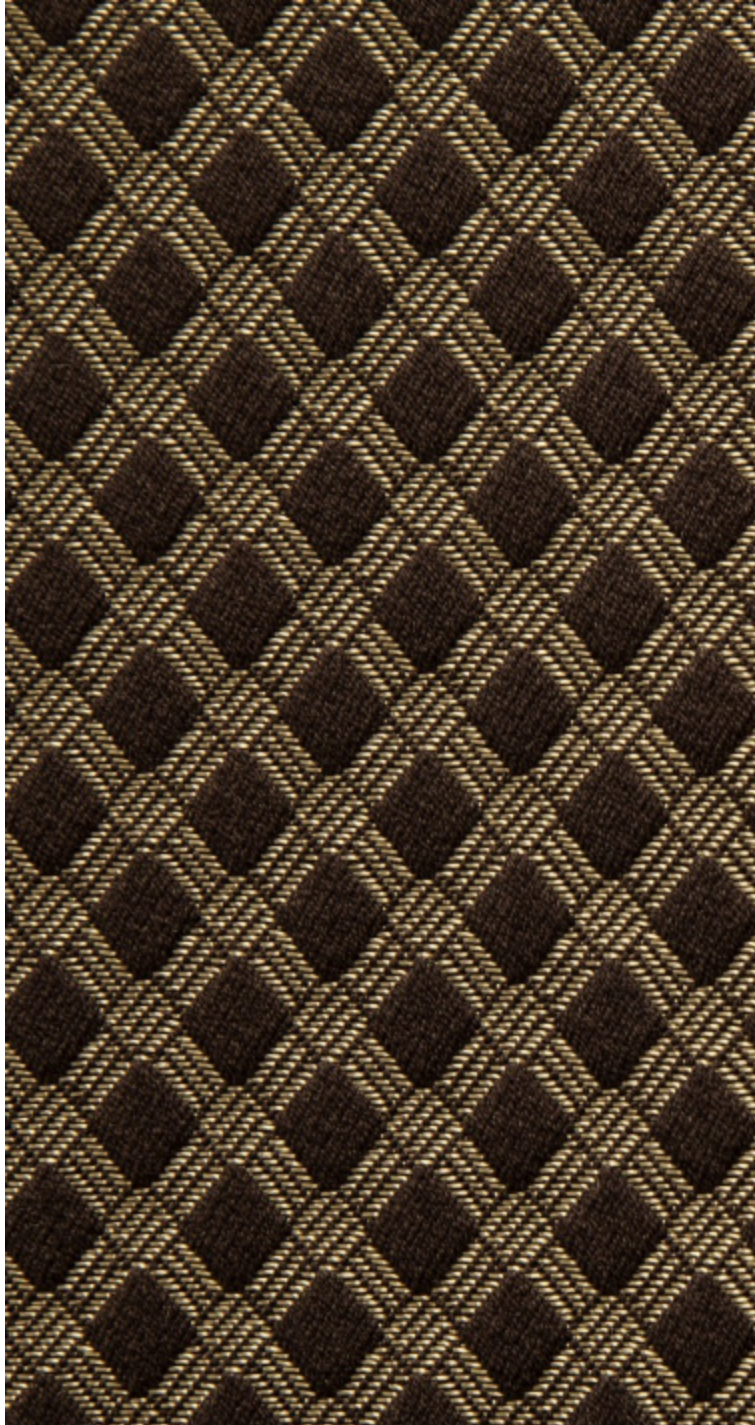


# LELIEVRE

PARIS

## QUADRILLE - BRUN

0569-01



Sober and delicate, this small Jacquard design still bears the mark of our historic French craftsmanship. Constructed as a brocatelle with a linen thread to give relief, the cotton warp is illuminated with a subtle grid adding depth to the fabric. A partner for all our lampas and damasks, for upholstery, wall coverings and elegant curtains. The delicate colors echo the classics while the neutrals provide finesse to more contemporary decoration.


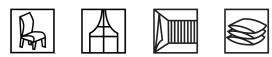






---

Collection	FLORILEGE
Brand	QUENIN

---

### TECHNICAL DATA

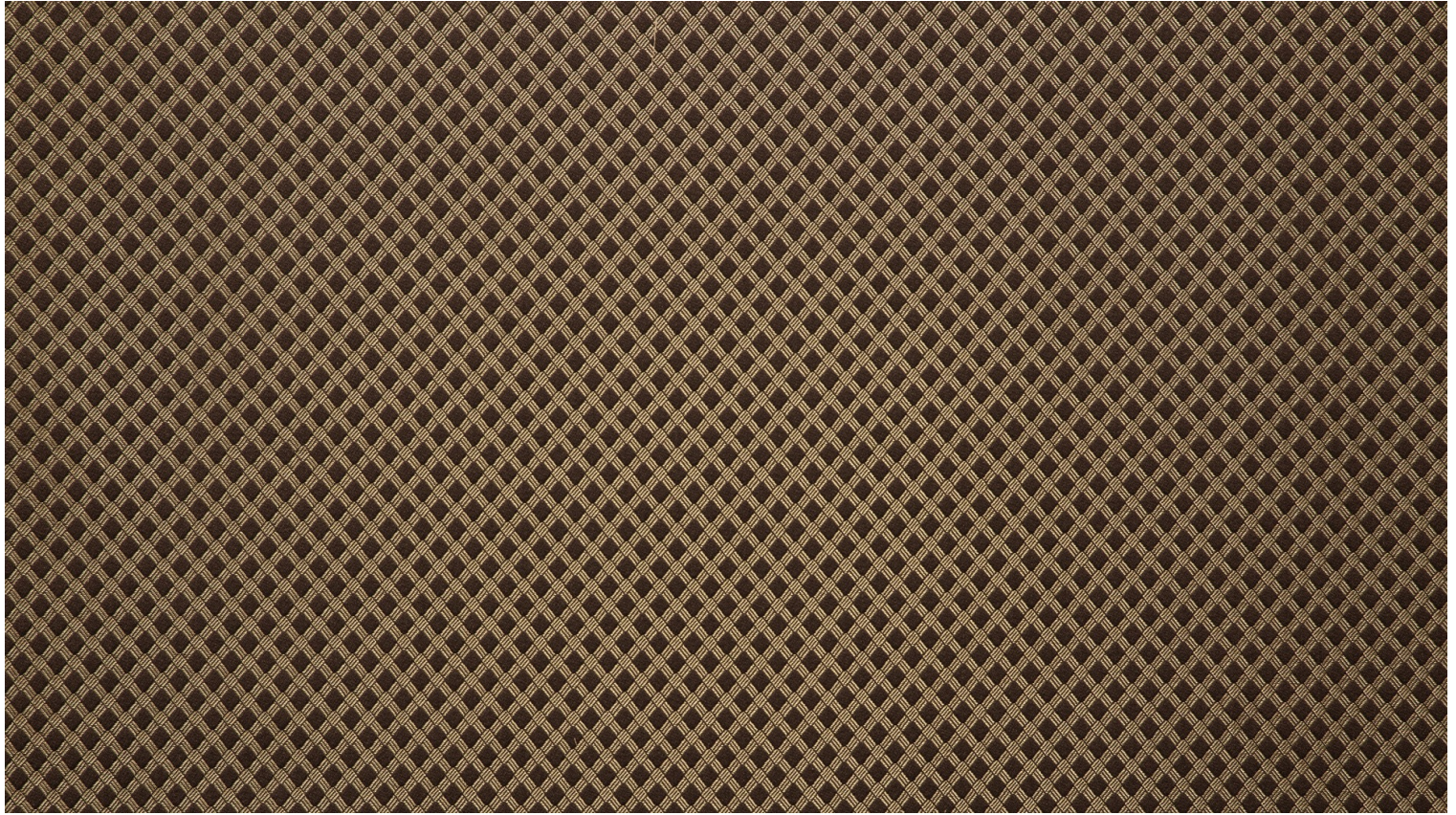
---

Composition	Cotton 42% - Linen 24% - Viscose 20% - Polyamide 14%
Width	140 cm
Repeat cut	No
Drop match	No
Care	   
Uses	   
Martindale test	40 000 T
Weight / Linear metre	410 g

---

# LELIEVRE

PARIS



## Available colours



0569-01  
**QUADRILLE -  
BRUN**



0569-02  
**QUADRILLE -  
TOMETTE**



0569-03  
**QUADRILLE -  
RUBIS**



0569-04  
**QUADRILLE -  
CREME**



0569-05  
**QUADRILLE -  
EMAIL**



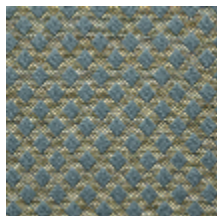
0569-06  
**QUADRILLE - OR**



0569-07  
**QUADRILLE -  
LAURIER**



0569-08  
**QUADRILLE -  
NATTIER**



0569-09  
**QUADRILLE -  
POMPADOUR**

**QUADRILLE - BRUN**

0569-01

