

**QUADRILLE - OR**


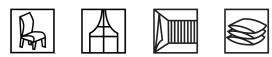
0569-06



Sober and delicate, this small Jacquard design still bears the mark of our historic French craftsmanship. Constructed as a brocatelle with a linen thread to give relief, the cotton warp is illuminated with a subtle grid adding depth to the fabric. A partner for all our lampas and damasks, for upholstery, wall coverings and elegant curtains. The delicate colors echo the classics while the neutrals provide finesse to more contemporary decoration.

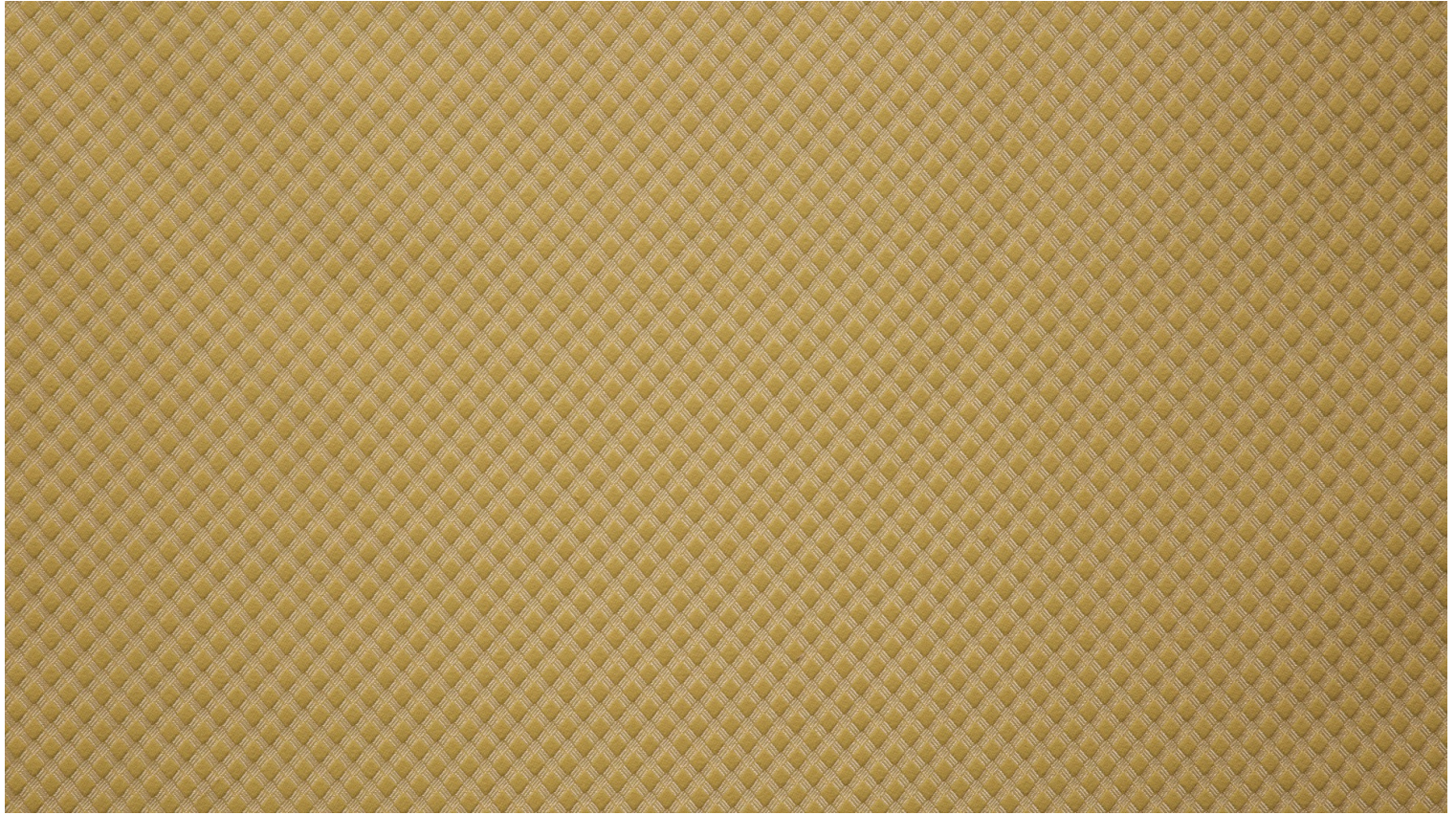
Collection	FLORILEGE
Brand	QUENIN

## TECHNICAL DATA

Composition	Cotton 42% - Linen 24% - Viscose 20% - Polyamide 14%	
Width	140 cm	
Repeat cut	No	
Drop match	No	
Care		
Uses		
Martindale test	40 000 T	
Weight / Linear metre	410 g	

# LELIEVRE

PARIS



## Available colours



0569-01  
**QUADRILLE -  
BRUN**



0569-02  
**QUADRILLE -  
TOMETTE**



0569-03  
**QUADRILLE -  
RUBIS**



0569-04  
**QUADRILLE -  
CREME**



0569-05  
**QUADRILLE -  
EMAIL**



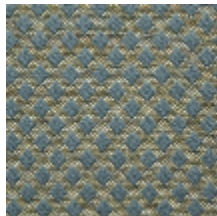
0569-06  
**QUADRILLE - OR**



0569-07  
**QUADRILLE -  
LAURIER**



0569-08  
**QUADRILLE -  
NATTIER**



0569-09  
**QUADRILLE -  
POMPADOUR**

# LELIEVRE

PARIS

## QUADRILLE - OR

0569-06

