

LELIEVRE

PARIS

TAÏGA - FORÊT

0638-14



This gorgeous broadcloth is a first for Lelièvre Paris. A chic and timeless essential, it comes in a very broad palette of 23 colourways. From old greys, a number of earth tones, classic and elegant chocolate and camel tones, to indigo blue and a deeper aubergine shade... The whole range is suitable for seating upholstery and curtains and is easily paired with all other fabrics from the BOREALIS collection.

Collection	BOREALIS
------------	----------

Brand	LELIÈVRE PARIS
-------	----------------

TECHNICAL DATA

Composition	Wool 80% - Polyamide 20%
-------------	--------------------------

Width	154 cm
-------	--------

Repeat cut	No
------------	----

Drop match	No
------------	----

Care	  
------	---

Uses	  
------	---

Martindale test	100 000 T
-----------------	-----------

Weight / Linear metre	420 g
-----------------------	-------

Fire rating	EN1021-1&2
-------------	------------

LELIEVRE

PARIS



LELIEVRE

PARIS

Available colours



0638-01
TAÏGA - NATUREL



0638-02
TAÏGA - ECRU



0638-03
TAÏGA - NEIGE



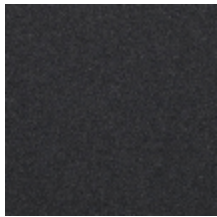
0638-04
TAÏGA - PERLE



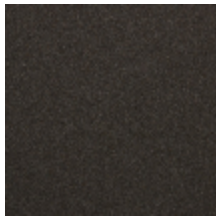
0638-05
TAÏGA - BRUME



0638-06
**TAÏGA -
CHARTREUX**



0638-07
TAÏGA - FUSAIN



0638-08
TAÏGA - VISON



0638-09
TAÏGA - OURS



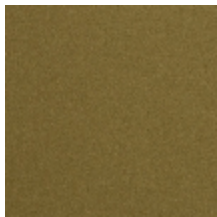
0638-10
**TAÏGA -
CHAMOIS**



0638-11
TAÏGA - CAMEL



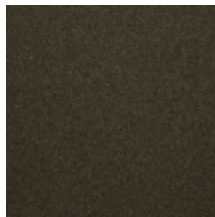
0638-12
TAÏGA - BLÉ



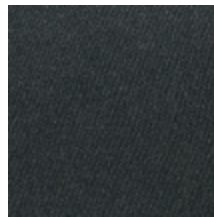
0638-13
TAÏGA - ANIS



0638-14
TAÏGA - FORÊT



0638-15
TAÏGA - KAKI



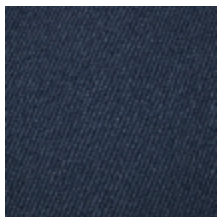
0638-16
TAÏGA - CÈDRE



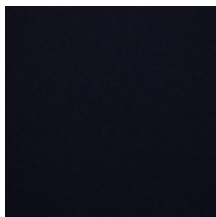
0638-17
TAÏGA - SAUGE



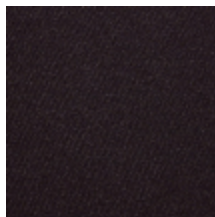
0638-18
TAÏGA - AZUR



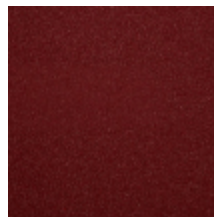
0638-19
TAÏGA - DENIM



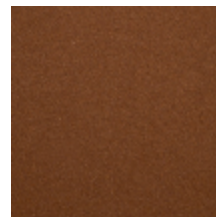
0638-20
TAÏGA - MARINE



0638-21
**TAÏGA -
AUBERGINE**



0638-22
TAÏGA - PIMENT



0638-23
TAÏGA - SAFRAN

TAÏGA - FORÊT

0638-14

