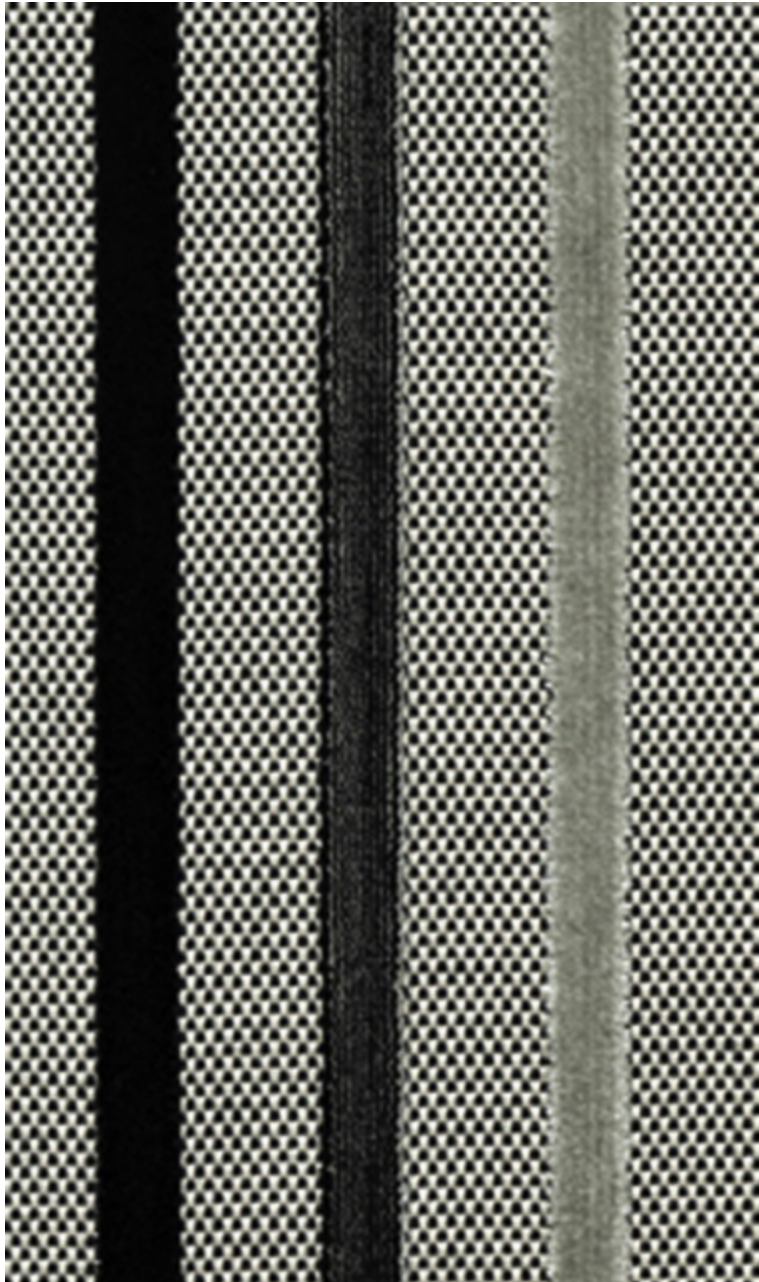


# LELIEVRE

PARIS

## RIAD - POIVRE

0639-01



Columns of color on a woven background. This striped velvet is in tonic colors. A contrasting checkerboard background in neutrals modernises and supports the regular velvet pattern in 3 colors adding rhythm with 12 new harmonies.

---

Collection	LIGNE D'HORIZON
------------	-----------------

---

Brand	LELIEVRE
-------	----------

---

### TECHNICAL DATA

---

Composition	Viscose 45% - Acrylic 22% - Polyester 18% - Cotton 15%
-------------	--

---

Width	140 cm
-------	--------

---

Repeat cut	No
------------	----

---

Horizontal repeat	14 cm
-------------------	-------

---

Drop match	No
------------	----

---

Care	   
------	---

---

Uses	  
------	---

---

Martindale test	40 000 T
-----------------	----------

---

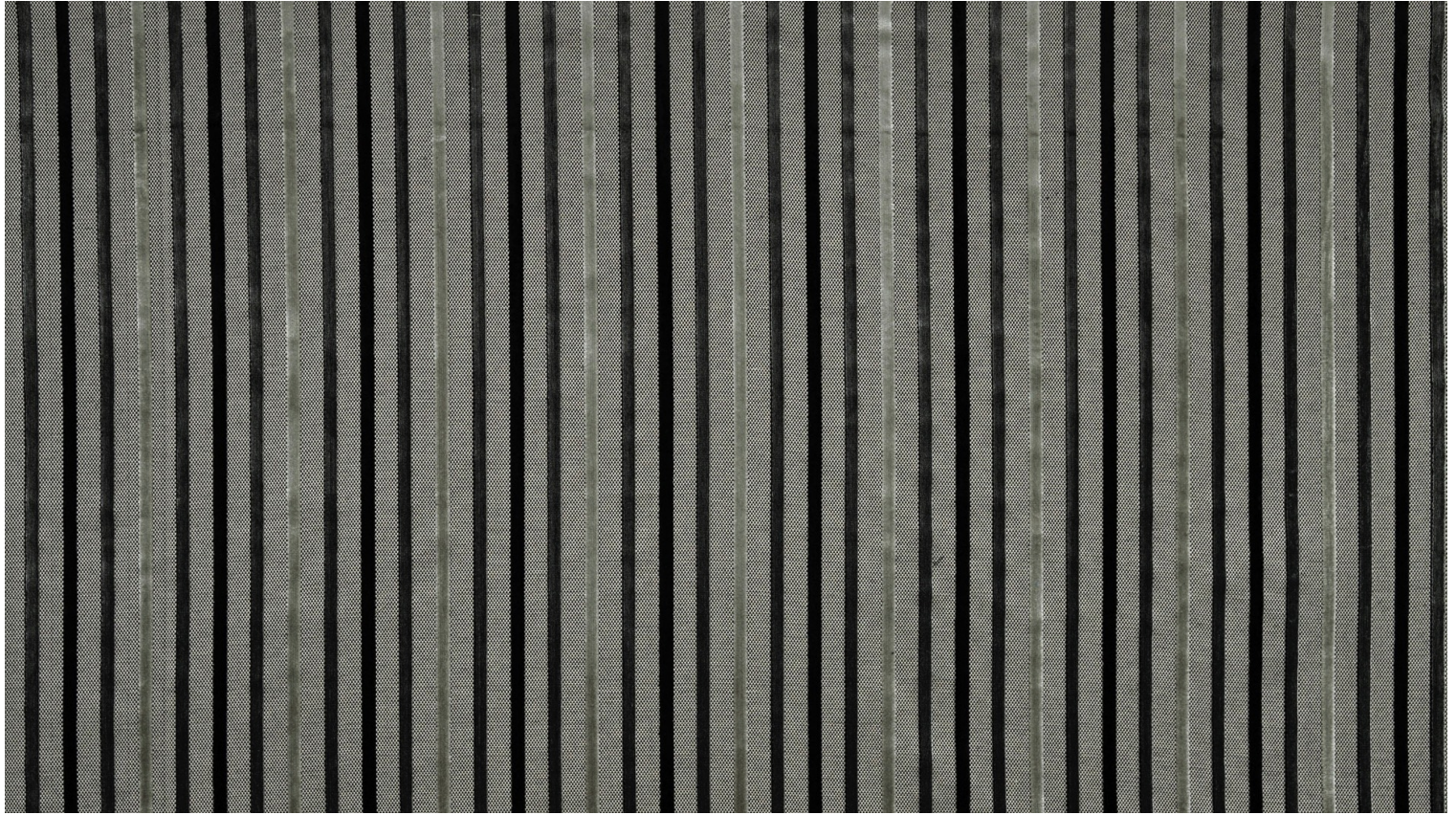
Weight / Linear metre	755 g
-----------------------	-------

---

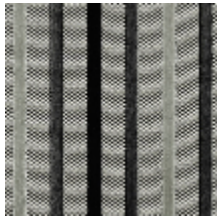


# LELIEVRE

PARIS



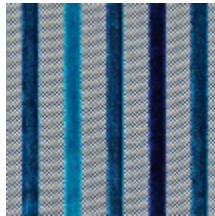
## Available colours



0639-01  
**RIAD - POIVRE**



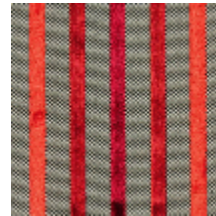
0639-02  
**RIAD - ECAILLE**



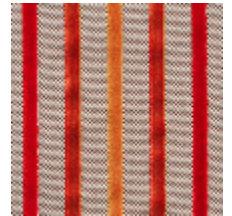
0639-03  
**RIAD - CAPRI**



0639-04  
**RIAD - FUCHSIA**



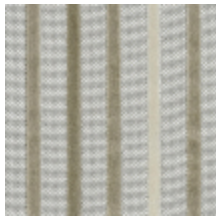
0639-05  
**RIAD - SANGUINE**



0639-06  
**RIAD - ORANGE**



0639-07  
**RIAD - TOPAZE**



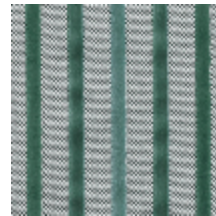
0639-08  
**RIAD - SABLE**



0639-09  
**RIAD - PERLE \***



0639-10  
**RIAD - DELFT**



0639-12  
**RIAD - PAGODE**



**RIAD - POIVRE**

0639-01

