

# LELIEVRE

PARIS

## ONDULATION - GREGE

6458-01



This wall covering made in France is a reinterpretation of BALTIC, a fabric from the BOREALIS collection evoking an undulating landscape. The boucle weave is accented with a contrasting yarn creating a pattern and play of light.

Collection THE WALL.3ÈME CHAPITRE

Brand LELIÈVRE

### TECHNICAL DATA

Composition Cotton 64% - Polyester 36%

Width 136 cm

Repeat cut No

Vertical repeat 82 cm

Horizontal repeat 140 cm

Uses 

Weight / Linear metre 405 g

[lelievrepairs.com](http://lelievrepairs.com)

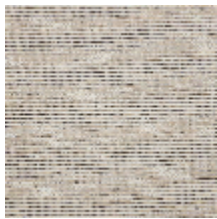
[contact@lelievrepairs.com](mailto:contact@lelievrepairs.com)

# LELIEVRE

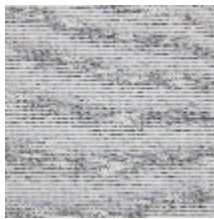
PARIS



## Available colours



6458-01  
**ONDULATION -  
GREGE**



6458-02  
**ONDULATION -  
GLACIER**



6458-03  
**ONDULATION -  
FUMÉE**

**ONDULATION - GREGE**

6458-01

