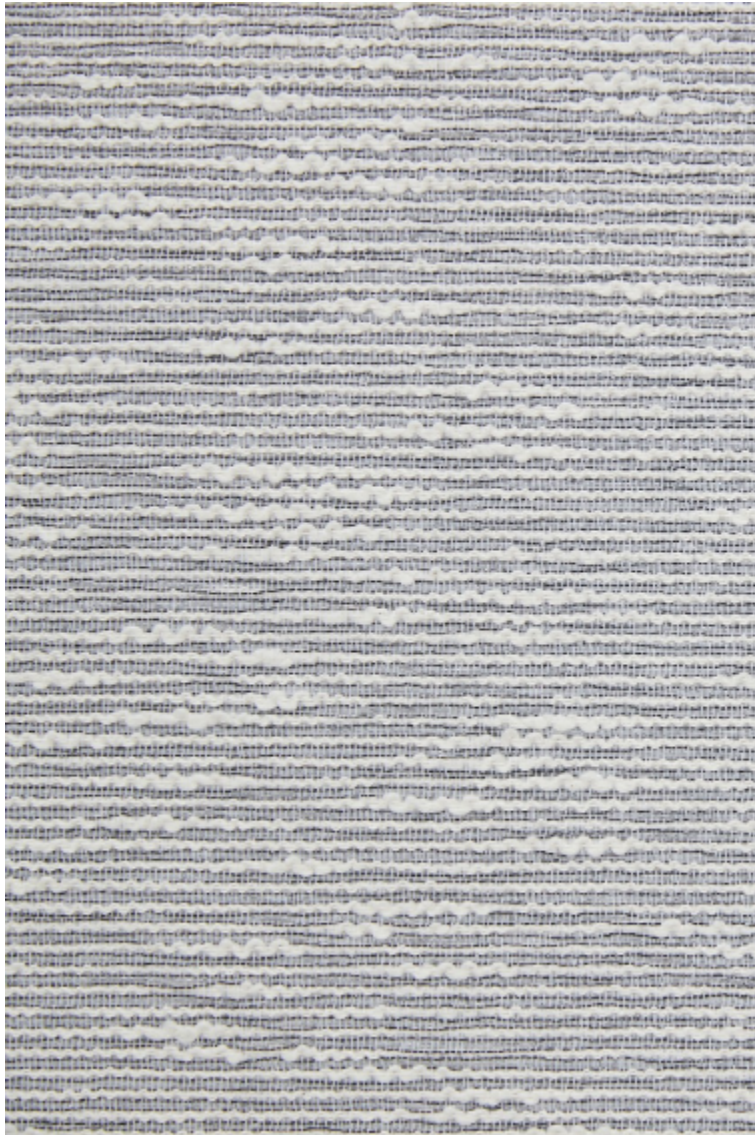


ONDULATION - GLACIER

6458-02



This wall covering made in France is a reinterpretation of BALTIC, a fabric from the BOREALIS collection evoking an undulating landscape. The boucle weave is accented with a contrasting yarn creating a pattern and play of light.

Collection	THE WALL.3ÈME CHAPITRE
------------	------------------------

Brand	LELIEVRE
-------	----------

TECHNICAL DATA

Composition	Cotton 64% - Polyester 36%
-------------	----------------------------

Width	136 cm
-------	--------

Repeat cut	No
------------	----

Vertical repeat	82 cm
-----------------	-------

Horizontal repeat	140 cm
-------------------	--------

Uses	
------	---

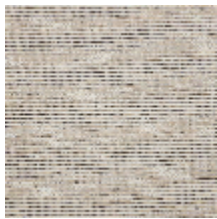
Weight / Linear metre	405 g
-----------------------	-------

LELIEVRE

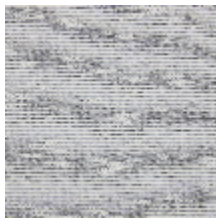
PARIS



Available colours



6458-01
**ONDULATION -
GREGE**



6458-02
**ONDULATION -
GLACIER**



6458-03
**ONDULATION -
FUMÉE**

ONDULATION - GLACIER

6458-02

